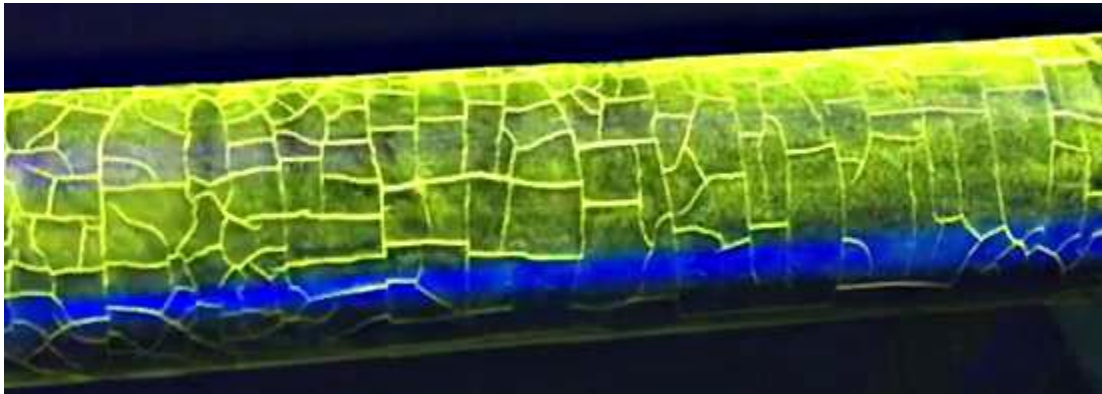


## NDT Supply.com Cracked Test Bars



- CB Bars have both coarse and fine natural cracks in all directions
- CB Bars can be used with fluorescent and non-fluorescent inspection media
- CB Bars are supplied with serialization and certification
- CB Bars meet ASTM E709-08 (Section 14.2.2 & 20.8.2) and ASTM E1444 (Section 7.1.2)
- 1" (25,4 mm) diameter and available in two different lengths; 5" (127 mm) and 12" (305 mm)
- Packaged in a plexiglass tube protective case

A known defect sample is needed to demonstrate the use of proper magnetizing technique (under or over magnetization) as well as the quality of magnetic particles, illumination, etc.

Cracks are created by a proprietary process. Every bar is different.



CB Bar with Protective Tube