

Verify the Structural Integrity of Your Components

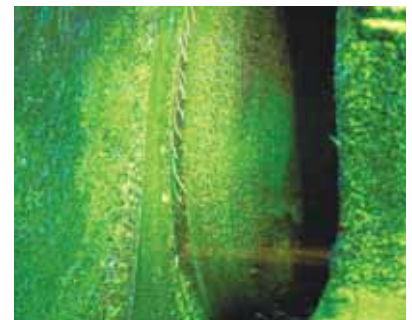
MPI 4562 AC/DC Magnetic Particle Inspection System



Find It Before You Fix It!

Trust Only a Complete Magnetic Particle Inspection with the DCM MPI 4562

AC/DC Magnetic Particle Inspection (MPI) is the most cost effective method of detecting both surface and internal cracks and imperfections in weld-joints or ferrous components such as shafts, castings, fasteners and more. The DCM MPI 4562 is designed for quick, easy operation.



Defects glow under black light



NDT Supply.com, Inc.
7952 Nieman Road
Lenexa, KS 66214-1560 USA
Phone: (913)-685-0675
Email: sales@ndtsupply.com



Hood and Fan (standard)
Retractable hood and fan
provide darkened area for
optimal inspection
environment.

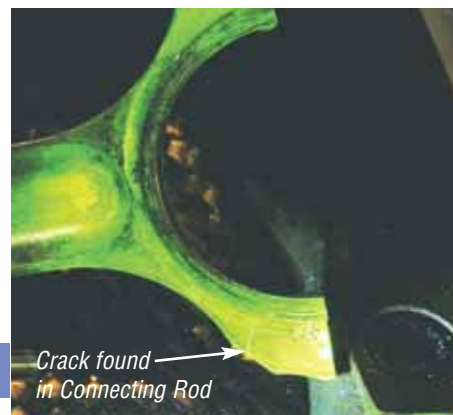
MPI 4562 Inspects a Variety of Parts



DC subsurface defect shown on ketose ring



*Stress Cracks found
in Crank Shaft*



*Crack found
in Connecting Rod*



Black Light Inspection Stand



Digital Readout Display



"Hands Free" Cycle Switch



Black Light Locking Electrical Plug



Circulation Fan Inside Hood

MPI 4562 Features:

- Select from three modes – AC (Alternating Current), HWDC (Half Wave DC) or FWDC (Full Wave DC) – for maximum versatility. Sub-surface cracks can be detected with HWDC or FWDC settings
- State-of-the-art electronic controls with digital display for convenient operation and easy visibility
- Both head and tailstocks adjust for easy adaptation of parts up to 62" (1575 mm) in length. Extended length models are available to handle part lengths up to 80" (2032 mm) or 100" (2540 mm)
- Reporting system verifies each shot cycle
- Automatic Demag Cycle eliminates residual magnetic fields
- 16" (406 mm) standard coil, 20" (508 mm) coil optional for large parts
- Pneumatic tailstock allows easy loading and unloading of parts
- Stainless steel indicator bath reservoir for low maintenance
- Automatic indicator bath agitation system maintains proper particle suspension during inspection
- Variable current control for different part sizes



NDT Supply.com, Inc.
7952 Nieman Road
Lenexa, KS 66214-1560 USA
Phone: (913)-685-0675
Email: sales@ndtsupply.com

Spec it out!

General Specifications

Max Part Length:	62" (1575 mm)
Electrical System*:	230V 1Ø, 150 Amps
Optional:	460V 1Ø, 75 Amps
Capacity:	500 lbs. (226.8 kg)
Floor Space:	36" D x 86" L (914 mm D x 2185 mm L)
Weight	1500 lbs. (680 kg)
Tank Capacity:	10 gal. (38 liters)
Cycle Output:	5000 Amp FWDC/2500 Amp HWDC 4000 Amp AC 7500 Ampere Turn Coil AC 22,000 Ampere Turn Coil FWDC

*Contact DCM Tech representative for other voltage options



Welded pipe sections mounted in MPI 4562. Coil shot or head shot chosen by a flip of a switch.

MPI 4562 Tool Kit

- User Manual
- Indicator Bath (16 oz)
- Gaussmeter
- Locking Nuts
- Leveling Pads
- Centrifuge Tube & Stand
- "Hands Free" Blacklight Stand



NDT Supply.com, Inc.
7952 Nieman Road
Lenexa, KS 66214-1560 USA
Phone: (913)-685-0675
Email: sales@ndtsupply.com