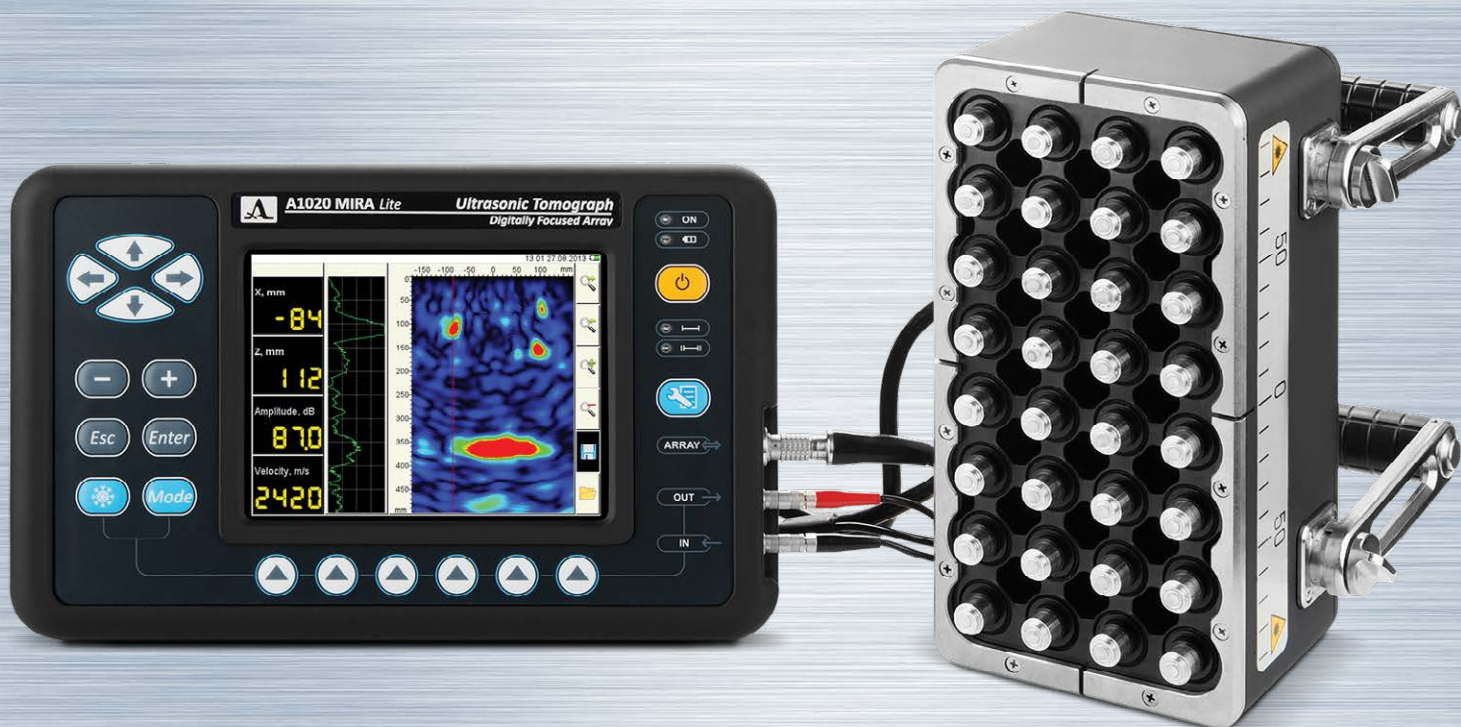


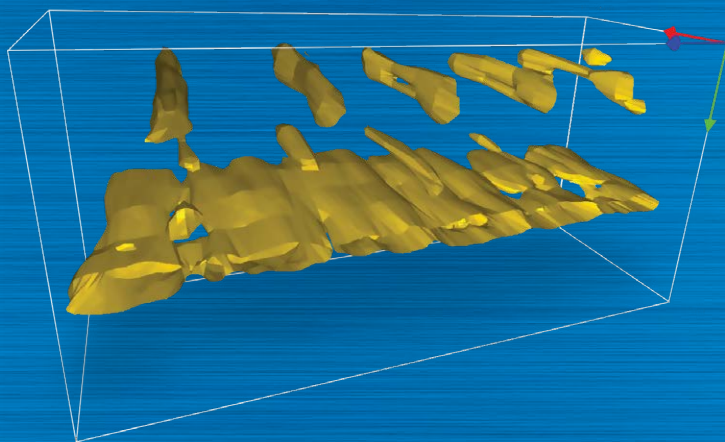


ACOUSTIC
CONTROL
SYSTEMS



A1020 MIRA *Lite*

THE MOST PORTABLE AND HANDY TOMOGRAPH
FOR REINFORCED CONCRETE INSPECTION



- Real-time B-scan image
- New generation of wear-proof DPC transducers
- Outstanding near-field resolution
- Optional Full-3D acquisition mode

Visualization by INTROVIEW®

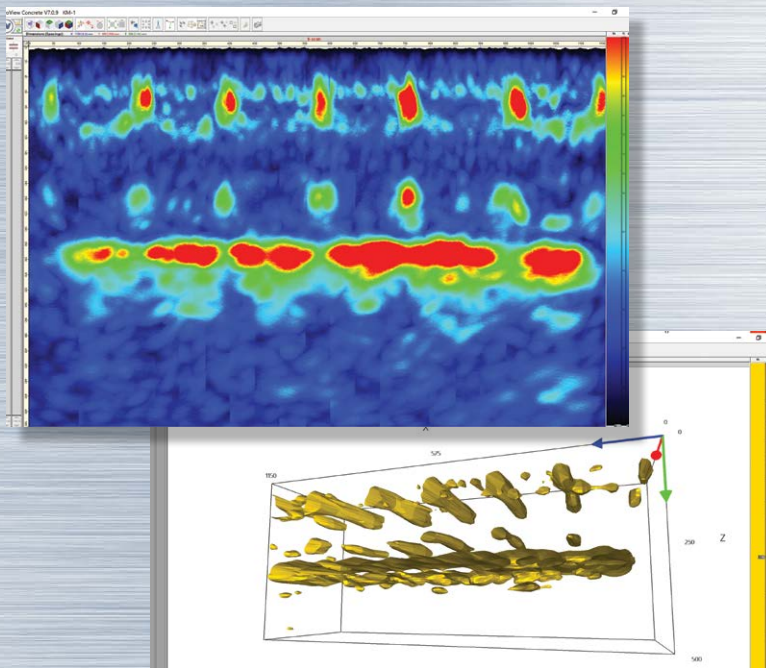
- Integral assessment by 3D imaging
- Novel crack sizing functionality

Specification

| | |
|------------------------------------|----------------------------|
| Number of transducers in antenna | 32 (8 groups x 4 elements) |
| Measuring range | 10 to 1.000 mm* |
| Time of continuous operation | up to 16 hours** |
| Analogue band width | 10 to 100 KHz |
| Nominal transducer frequency | 50 KHz |
| Safety rated | IP54 |
| Physical size of transducer array: | 220 x 110 x 90 mm |

Special Features

- Lightweight antenna array for longstanding on-site operation
- Real-time B-scan with FRR up to 10 Hz
- German TÜV certified methodology for reinforcement and duct channels detection
- Novel crack-depth evaluation functionality
- Improved dust protection by durable membrane



3D Software INTROVIEW®

- 3D-View modes:
ISO-Surface
Texture Mapping
Maximum Intensity Projection
- 2D-View modes:
Panorama B-, C-, D-Scan
Cutting plane / gated volume
- Compatibility with other ACS Instruments
(A1220 MONOLITH, A1040 MIRA)



Delivery Kit

- A1020 MIRA Lite Electronic Unit
- M4002 Antenna Array
- 220V/15V Power supply unit
- USB cable
- Checking sample
- Transport case
- Free Software INTROVIEW®

* Material & application dependent ** Operation mode dependent



**ACOUSTIC
CONTROL
SYSTEMS**

NDT Supply.com, Inc.

7952 Nieman Road
Lenexa, KS 66214-1560 USA

Phone: 913-685-0675, Fax: 913-685-1125
e-mail: sales@ndtsupply.com, www.ndtsupply.com

