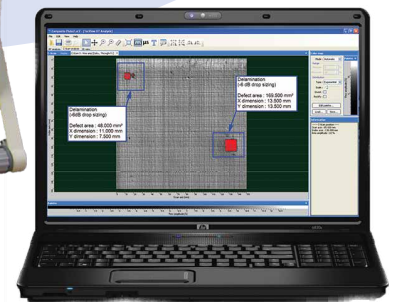
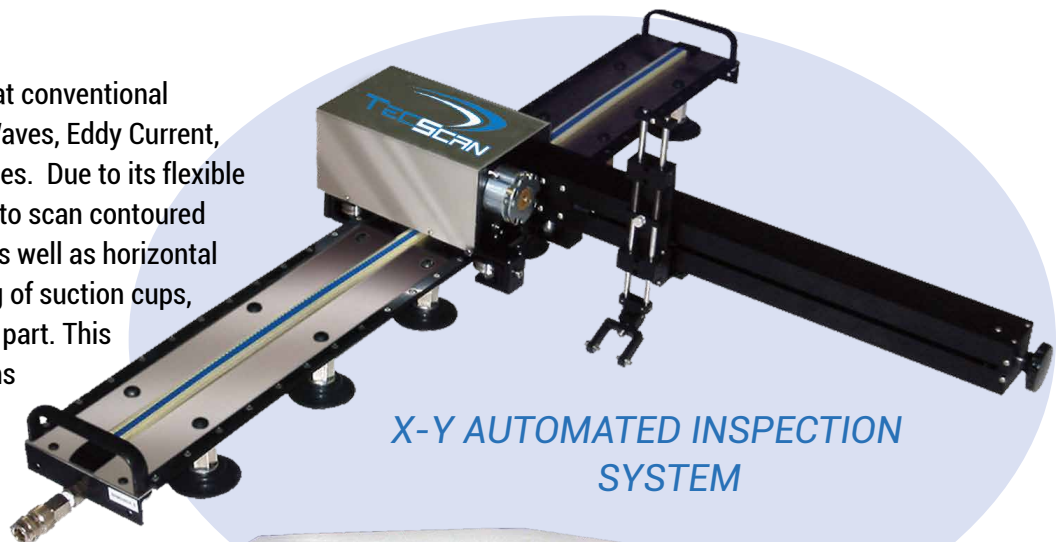


## ARMANDA SCANNER

**THE ARMANDA SYSTEM** is a Multi-Technology X-Y Automated Robotic Mechanical Arm specifically designed for Non-destructive Assessment of Metallic and complex Composite structures. It is a fully integrated solution which includes an Ultrasonic, Eddy Current or Bond testing hardware and our TecView™ software which is designed for NDT scanning applications.

### The ARMANDA

consists of a light weight portable Arm that conventional Ultrasonic, Advanced Guided Ultrasonic Waves, Eddy Current, and Time-Of-Flight-Diffraction technologies. Due to its flexible rail fixtures, the ARMANDA has the ability to scan contoured and surfaces and can operate in vertical as well as horizontal orientations. A support system, consisting of suction cups, helps secure the scanner to the inspected part. This is a feature that is crucial when inspections are done vertically or on contoured surfaces. In addition, the ARMANDA is equipped with a spring loaded Z-axis which improves the accuracy of transducer positioning and assures constant coupling between the probe and the inspecte part.



Axis	Accuracy	
Scanning Resolution	0.0005"/Step	0.0127mm/Step
Indexing Resolution	0.005"/Step	375 mm
Scanner Speed (X/Y Axes)	10"/Sec	0.015 mm/Step
Scanning Rate	5 KHz	
Minimum Curvature Radius	18"	460mm

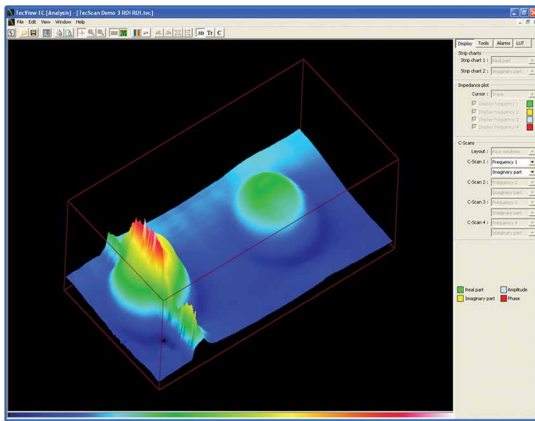


**TecView™**

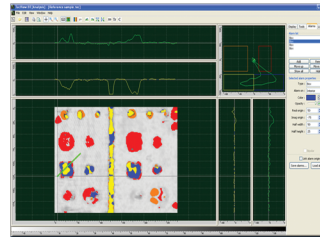
## ARMANDA's major applications are:

- Flaw Sizing
- Weld Inspections
- Corrosion Mapping
- Metallic Structures
- Composite Structures
- Rapid inspection of large or inaccessible areas

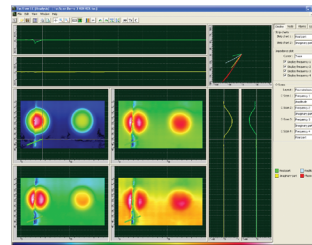
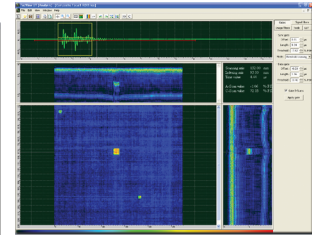
When combined with one of our TecView™ software packages, the ARMANDA system becomes a fully Integrated Solution designed for the inspection of Aircraft skin, Metallic and Composite structures as well as for a whole range of other applications. The scanner can be easily disassembled and stored in the provided transportation cases for site inspections.



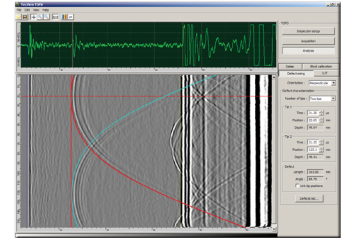
**TecView™**  
BT



**TecView™**  
UT



**TecView™**  
EC



**TecView™**  
TOFD

**TecView™** consists of a suite of software packages that comprises Ultrasonic, Eddy Current, Pulsed Eddy Current and Time-Of-Flight-Diffraction technologies. Combining the best of Windows operating systems and graphical user interface, TecView™ makes the NDT process simple and rapid. The software aids the user to setup the inspection parameters and it incorporates different modules including Data Acquisition and Management, Robotic control, Imaging as well as Data Analysis and Interpretation.

- Fully Automated Data Acquisition Scanner
- Compatible with multiple NDT technologies: UT, EC, BT and TOFD
- A complete integrated solution: an Automated Scanner, a TecView™ acquisition and analysis software package, a portable workstation, and a Travel case.

[www.tecscan.ca](http://www.tecscan.ca)

T (1) 450-641-5876  
 F (1) 450-641-5873  
 E [info@tecscan.ca](mailto:info@tecscan.ca)  
 75 De Mortagne Blvd., Suite 122,  
 Boucherville, Quebec, Canada J4B 6Y4

