



The Specialist in Automated NDT

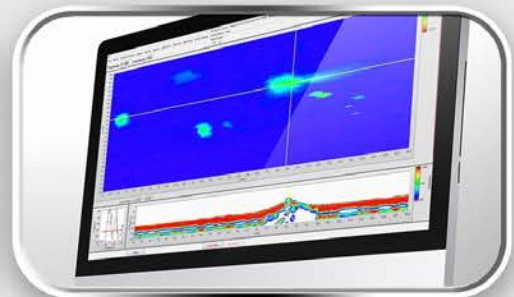
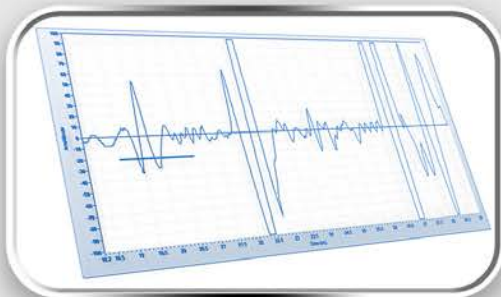


PROSCAN^{XT}



Smallest & Most Powerful Ultrasonic Flaw Detector

A, B, C-Scan, TOFD, SRGW, 2-Axis Encoding, USB, 4"x 2"x 1"

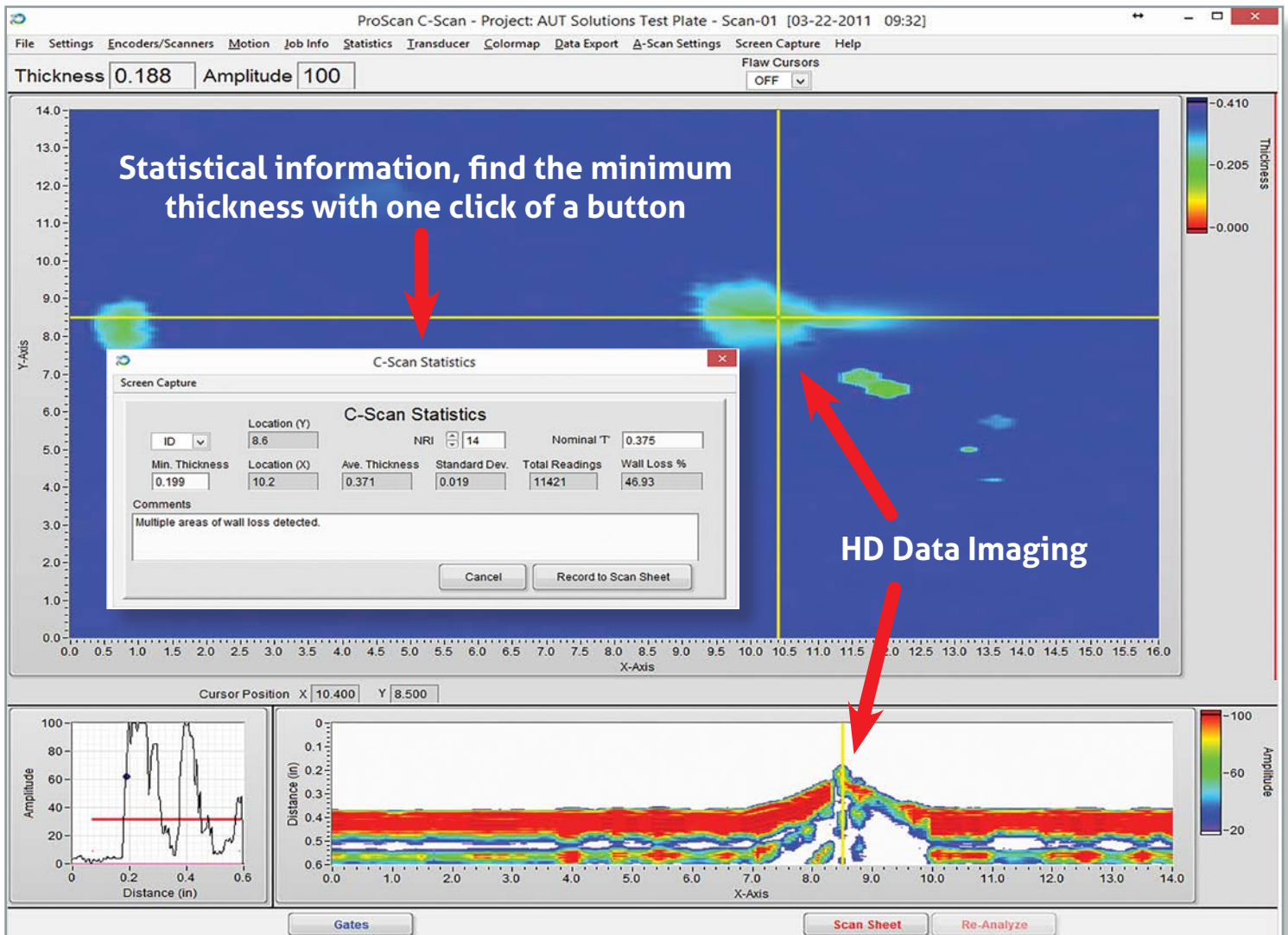


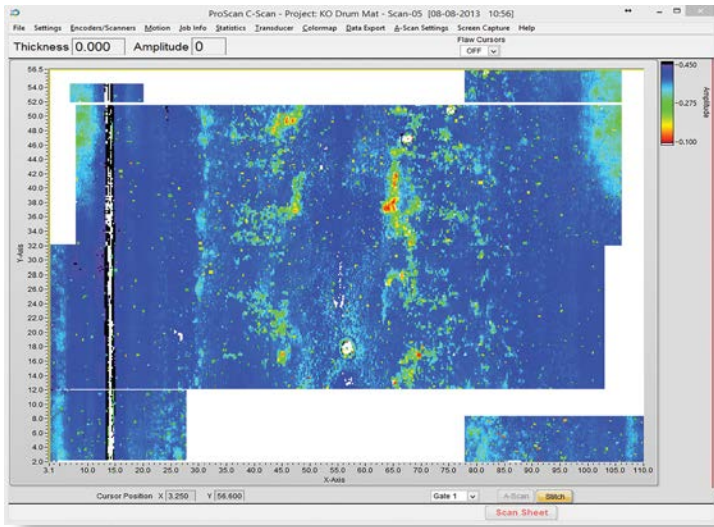
ProScanXT

The ProScanXT is a USB-powered single-channel high-speed acquisition system with advanced UT tooling and visualizations. The ProScan delivers high end performance while remaining user-friendly and cost effective. The software includes A-scan, B-scan, C-scan, 3D and new 4D displays specifically designed for Corrosion Mapping, Time of Flight Diffraction (TOFD) for weld inspection, and Short Range Guided Wave (SRGW).

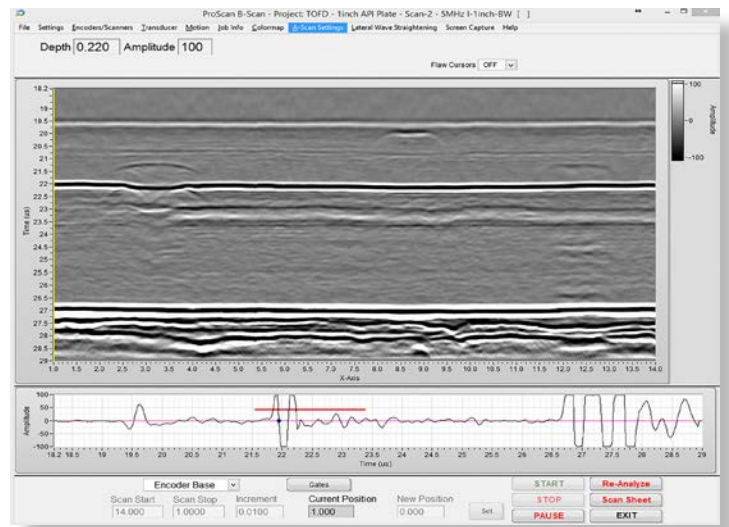
Features

- Full Project Stitching – Can run smaller scan sizes for increased productivity then stitch scans for complete inspection view
- DAC Implementation
- TOFD – Tools, Lateral Wave Straightening
- Reporting - Data Export with Grid Control
- Statistics – Find minimum thickness fast
- Data Skewing for angle beam transducers and HIC inspection

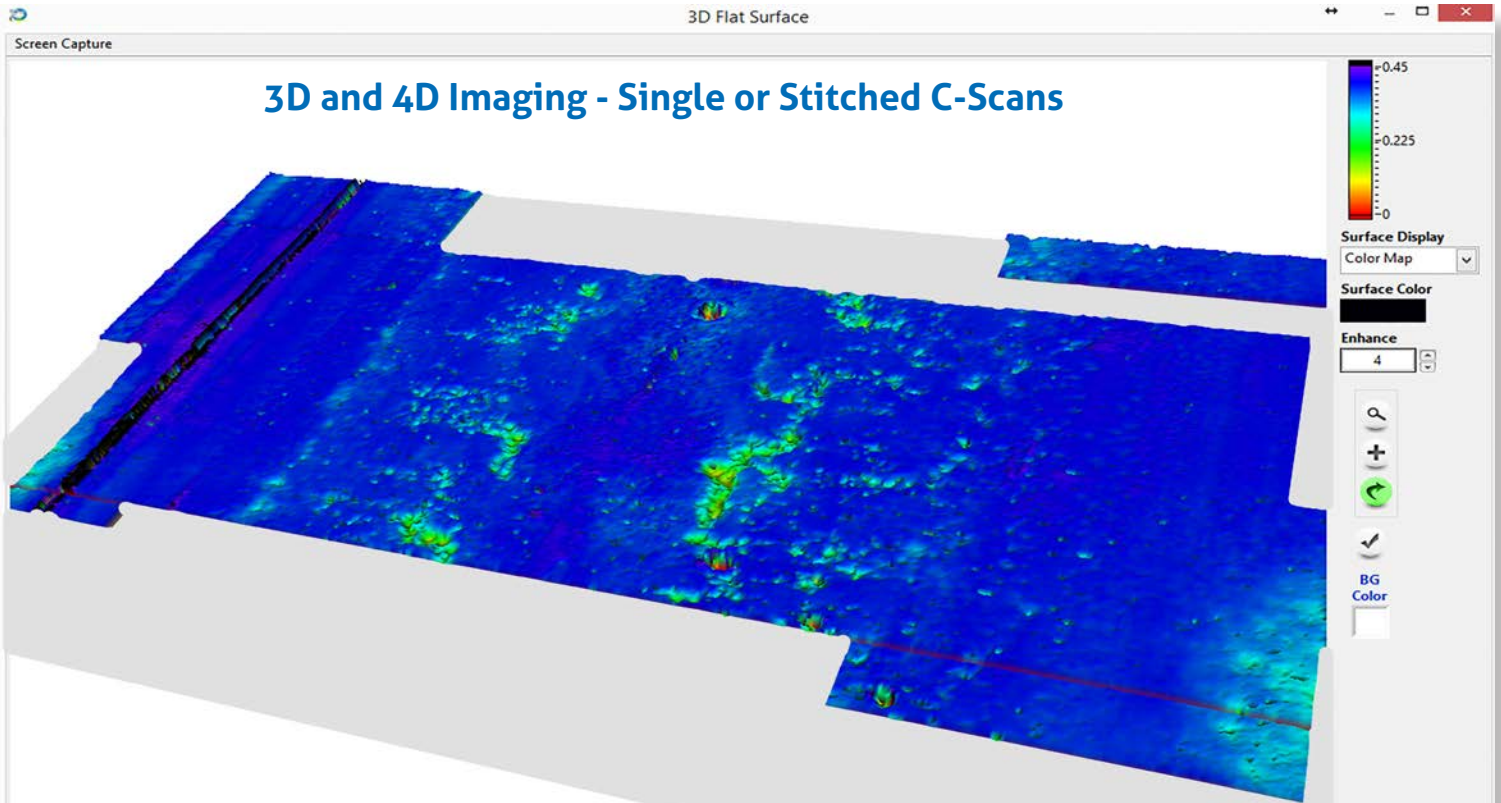




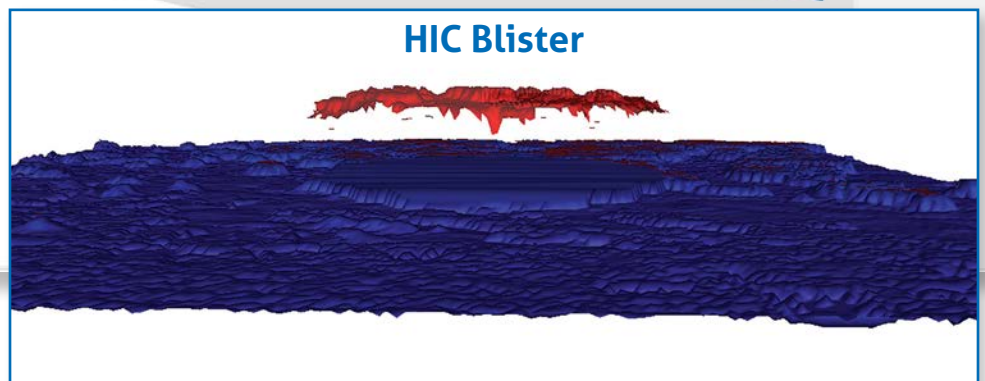
C-Scan Stitching - True Corrosion Mapping



Time of Flight Diffraction (TOFD)



3D and 4D Imaging - Single or Stitched C-Scans



HIC Blister

Specifications



7952 Nieman Road, Lenexa, KS 66214-1560 USA
Phone: 913-685-0675, Fax: 913-685-1125
www.ndtsupply.com, sales@ndtsupply.com



General

Dimensions: 3.75" x 2.25" x 0.95"
Weight: 7 oz
Connections: UT, 2 Lemo 00: 1 pulser/
receiver & 1 Receiver
PC/power: 1 USB 2.0 (up to 480 Mbps)
Operating system: All Windows OS compatible

Pulser

Voltage: 10-250 V
Pulse width: 10 ns – 0.4 μ s

Receiver

Gain: 0 – 90 dB, in steps of 0.1 dB
Bandwidth: 0.50 – 25 MHz

Acquisition

Sampling rate: 25/50/100 MHz
Transducer mode: Single (pulse echo)/Dual
(pitch-catch-through
transmission)
PRF: 6 Hz – 2 KHz

Processing

Rectifier: Full, +half, -half, RF, &
Envelope
Filters: 2.5/5/10 MHz; Broadband
Resolution: 12 bit live A-scan, 8 bit for
stored data
Screen linearity: \pm 5%
Linearity: \pm 1 dB on total gain dynamic
Encoder: 5 v TTL (15 pin Sub-D), 100mA

