



## HIGH-RESOLUTION, NON-GLASS COMPACT DR

The HPX-DR 2530 PH Non-Glass Detector provides high-resolution imaging capability and a non-glass design for maximum durability against the rigors of NDT field work.

See more with the 98  $\mu\text{m}$  resolution for optimal image defect visibility. Do more imaging in confined areas or between objects; the new HPX-DR 2530 fits in tight spaces with its compact size. And save more, our non-glass detector design incorporates a tougher material instead of glass, which virtually eliminates costly repairs for broken glass.

All of Carestream NDT CR and DR products run on our all-in-one INDUSTREX software, so you don't need to purchase costly add-on modules to utilize the benefits of both.

### BENEFITS AT A GLANCE

- Improved defect detection with 98  $\mu\text{m}$  resolution
- Compact size (250 x 300mm) and thin profile (14.7mm) for positioning in tight spaces
- Tungsten shielding for higher cumulative dose while preserving image quality
- Protective, weatherproof enclosure for use in harsh environments
- Close-to-edge imaging maximizes surface area for image capture
- Robust wireless connectivity for faster image transfer and analysis
- Lithium-ion batteries with battery 'hot-swap' to keep the detector running during battery change



**COMES WITH A 2-YEAR WARRANTY AND FREE LOANER PROGRAM!**

We're so confident in the design and reliability of this detector that we're offering a two-year warranty. If your detector ever does need service, we offer a loaner service (US and Canada only) to minimize downtime and avoid the expense of purchasing a back-up detector.

### SPECIFICATIONS

#### MECHANICAL

Size (mm)	Active area: 250 x 300 Dimensions: 282 x 332 x 14.7
Weight	3.1 kg (6.8 lb)
Housing Material	Aluminum
Load Limit	Distributed evenly over detector area: 170.1 kg (375 lb)
Conversion Screen	DRZ FINE
Pixel Pitch (µm)	98
Scan Method	Progressive
A/D Conversion (bits)	16
Image Resolution (lp/mm)	5.1 lp/mm

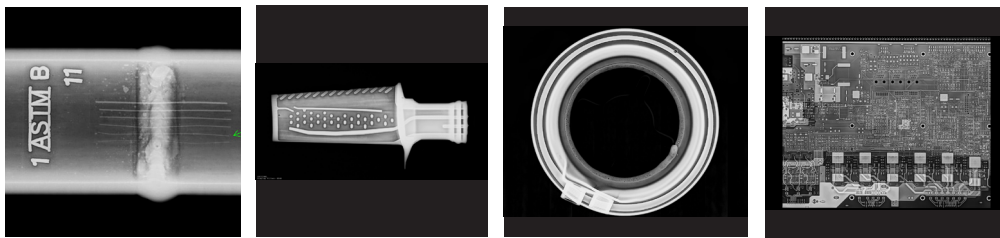
#### WIRELESS SYSTEM

Network Type	Isolated Private Wireless LAN (WLAN)
Wireless Protocol	802.11 A, G, N, AC

#### ENVIRONMENTAL

Shock	High shock tolerance
Temperature Range (°C)	-20 to +50 Ambient-Storage (-23 to +60) Shipping (-23 to +60)
Relative Humidity	Operating 10 - 86%
Non-Condensing	Storage 10 - 86%
Ingress Protection	IP57

### HIGH-RESOLUTION OUTPUT IN THE LAB OR IN THE FIELD



### ACCESSORIES FOR EVEN MORE STRENGTH AND LONGEVITY

Protective cover for lab use increases detector load limit up to 340 kg (750 lb).

Mount kit with pipe cleats to reduce stress on the detector for pipeline imaging.



### EXPOSURE INTERFACE BOX (EIB)

- Provides a standalone battery powered Wi-Fi access point to HPX-DR Detectors.
- Optionally provides a communications interface to support select Golden pulse generator models.
- The pulse generator interface enables timing coordination of the HPX-DR Detector image capture with the Golden X-ray pulse generation.



7952 Nieman Road, Lenexa, KS 66214-1560 USA  
Phone: 913-685-0675, Fax: 913-685-1125  
[www.ndtsupply.com](http://www.ndtsupply.com), [sales@ndtsupply.com](mailto:sales@ndtsupply.com)