

Power Generator



Portable crack detection units with carrying handle; for Magnetic Particle Testing.

This Power Generators are dedicated AC/HWDC current supply, designed to **minimize** weight and dimension for the best operator comfort.

The intensity of the test current is indicated on an analog or digital display.

Product Characteristics:

DF M C HW - Version							
Features		15	30	40	60	80	100
Effective AC	A	1100	2200	2800	4250	5750	7500
Peak AC	A	1500	3100	4000	6000	8000	10500
Effective DC		750	1500	2000	3000	4000	5000
Peak DC		1500	3000	4000	6000	8000	10000
Relative duty cycle	% ON/OFF	30 / 70	30 / 70	30 / 70	30 / 70	30 / 70	30 / 70
Mains connection	V	400	400	400	400	400	400
Frequency	Hz	50	50	50	50	50	50
Recommended high current cable (not included)	m	2 x 2,5	4 x 2,5	4x2,5	6x2,5	6x2,5	8x2,5
High current cable cross section (not included)	mm ²	95	120	120	120	120	120
Test current adjustment	s	0-5	0-5	0-5	0-5	0-5	0-5
Current indication (ammeter)		Digital	Digital	Digital	Digital	Digital	Digital
Overheating protection		Yes	Yes	Yes	Yes	Yes	Yes
Demagnetization		Yes	Yes	Yes	Yes	Yes	Yes

Standard version is equipped with Gifas Dinse output, under request it is also available with Copper Plate output.



Gifas Dinse output



Copper Plate output

Main Options

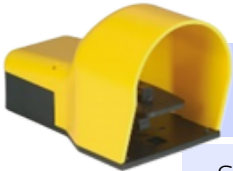


Recommended High Current Cables

Cables available with different section, length and connection kit depending on the final system configuration.



Digital Ammeter



Safety Footswitch

Safety Footswitch, wire connected to the system. The wire length is 3 m. This footswitch allows the Exam Start and is equipped with a safety pressure system that avoid eventual accidental starts.



Operator Panel DELTA SCREEN 7" 2.0 Touch screen

The main data and parameters controlled, managed and displayed are: exam set-up; system management, general functions and magnetic bench functions; passwords. Possibility to save up to 50 recipes. All indicated data can be viewed on operator panel or from internal corporate network on PC.

Other Options

Heavy Duty Frame

Electronic switching AC/DC

Impulse Magnetization

NDT Supply.com, Inc.

7952 Nieman Road
Lenexa, KS 66214-1560 USA

Phone: 913-685-0675, Fax: 913-685-1125

e-mail: sales@ndtsupply.com, www.ndtsupply.com

