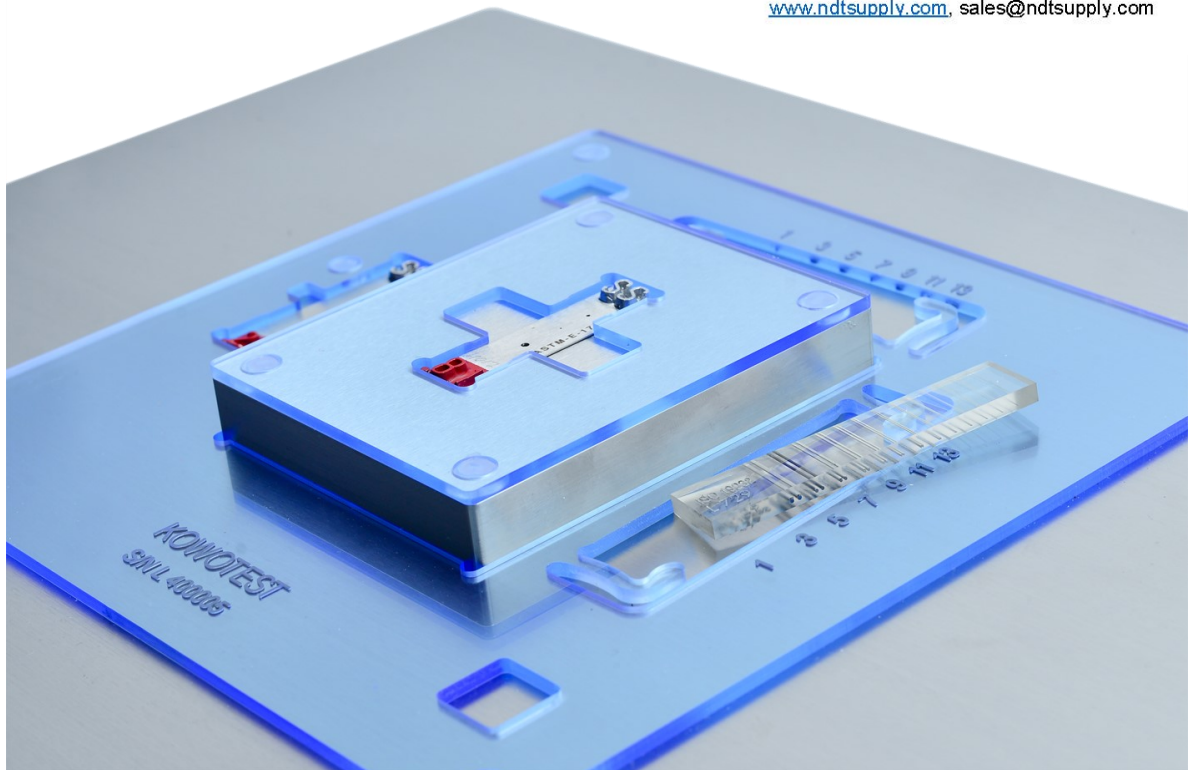


# Duplex Plate Phantom

## Duplex Plate Phantom Heavy Metal - HM Light Metal - LM according to ASTM E2737



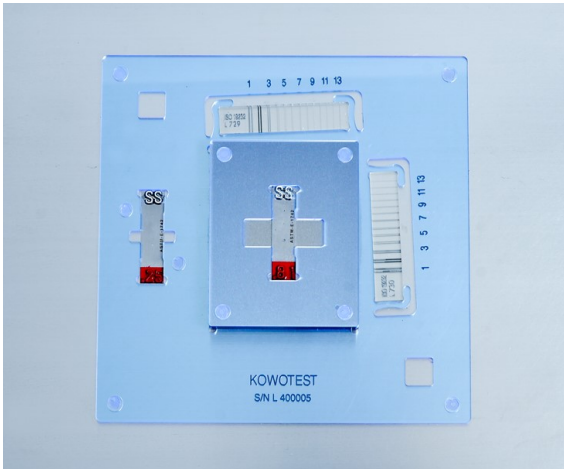
7952 Nieman Road, Lenexa, KS 66214-1560 USA  
Phone: 913-685-0675, Fax: 913-685-1125  
[www.ndtsupply.com](http://www.ndtsupply.com), [sales@ndtsupply.com](mailto:sales@ndtsupply.com)



Type 2 Duplex Plate Phantom  
for Performance Evaluation  
and Long-Term-Stability Tests of DDAs

# Test Phantom for Long-Term Stability Test of DDA Systems (DR)

The Type 2 Duplex Plate Phantom enables to test relevant parameters of DDA systems like Basic Spatial Resolution, Contrast Sensitivity, SNR and Signal Level for initial performance evaluation and long-term stability. These test required and described in detail in ASTM E2737 have to be performed periodically for checking process control and lang-term stability.



## Specification:

### IQI, Gauge

- A Thin Plate
- B Thick Plate
- C Hole Type IQI - .SS 25 / AL .50
- D Hole Type IQI - SS .81 / AL 2.0
- E ROIs - Thin Plate
- F ROIs - Thick Plate
- G Duplex Wire Type IQI

### Dimensions:

### Test, Check

- HM 5 mm (/ LM 12 mm)
- HM 15 mm / LM 38 mm
- Contrast Sensitivity (edge or hole)
- Contrast Sensitivity (edge or hole)
- Signal to Noise Ratio, Signal Level
- Signal to Noise Ratio, Signal Level
- Basic Spatial Resolution, Unsharpness

- 400 x 300 / mm
- 15.75 x 11.81 / inch

## Advantages of Type 2 compared to Type 1 Duplex Plate Phantom

**IQI on thick plate is located in the center of the plate:**

low scatter radiation and much lower gradient on the IQI  
for improved repeatability of contrast sensitivity tests

**Free areas beside long side of the IQI:**

Allowing contrast sensitivity evaluation also at the edge of the IQI  
improved repeatability compared to evaluation at the holes of IQI

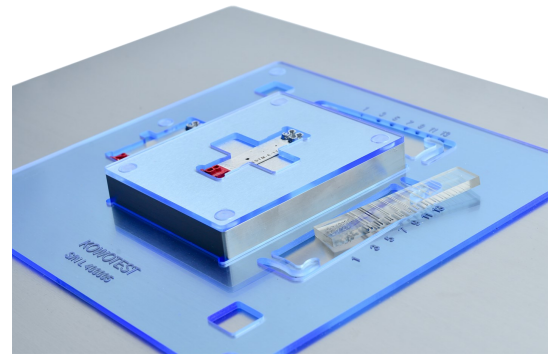
**Cut-outs in plastics for ROIs:**

ROIs clearly visible on the X-ray image. Easier evaluation

**Two Duplex Wire Type IQIs can be inserted:**

Portrait and landscape axis can be evaluated in one image

**Duplex Wire Type IQIs can be removed:**



## Scope of Supply:

**Duplex Plate Phantom Heavy Metal (HM) in wooden case**  
Complete with Hole Type IQI ASTM E1742 - SS size .25 and .81

Article No.: 11 00177

**Duplex Plate Phantom Light Metal (LM) in wooden case**  
Complete with Hole Type IQI ASTM E1742 - AL size .50 and 2.0  
Test Certificates acc. to ASTM E2737  
Declaration of Conformity acc. to EN ISO/ IEC 17050-1/ -2

Article No.: 11 00178

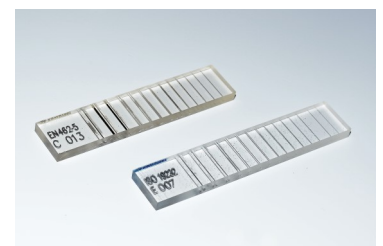
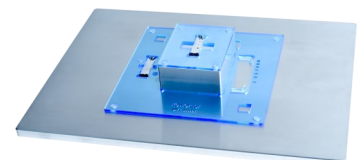
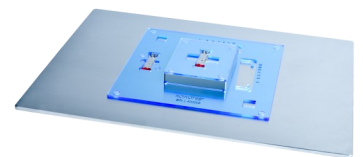
## Optional :

Holder for Duplex Plate Phantom HM and LM, stainless steel

Article No.: 11 00179

Duplex Wire Type IQI acc. to ASTM E2002, ISO 13232-5 - D13  
*Duplex Wire Type IQIs not included but required.*

Article No.: 11 00155



**NDT Supply.com, Inc.**

7952 Nieman Road  
Lenexa, KS 66214-1560 USA

Phone: 913-685-0675, Fax: 913-685-1125  
e-mail: [sales@ndtsupply.com](mailto:sales@ndtsupply.com), [www.ndtsupply.com](http://www.ndtsupply.com)