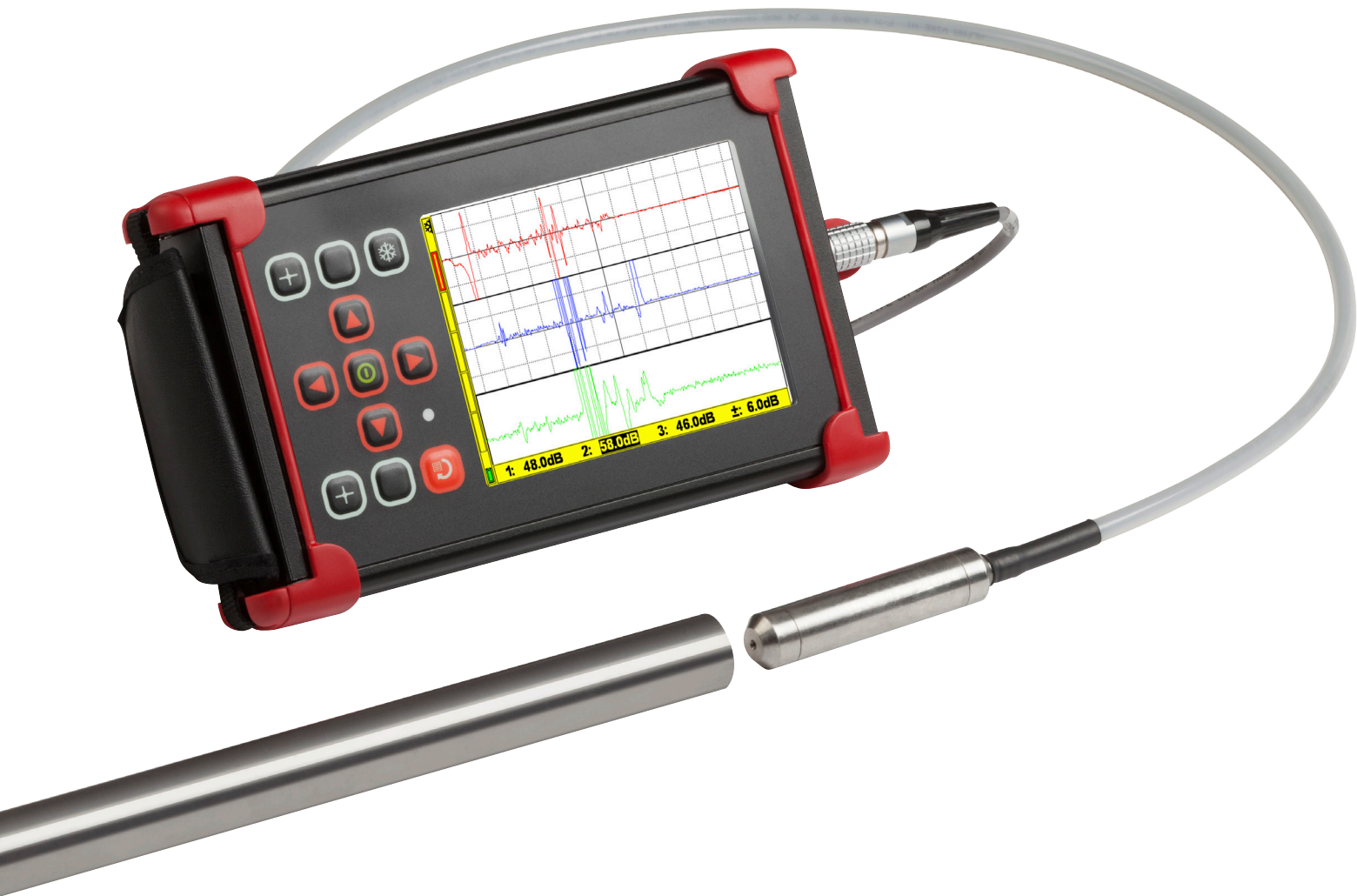


STEEL CHECK

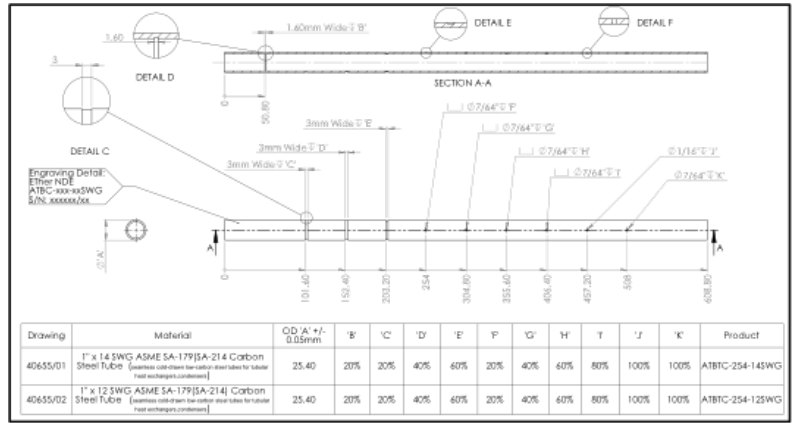
COMPACT 3 CHANNEL FLUX LEAKAGE TUBE TESTING



- ✓ Dedicated one method tube inspection unit.
- ✓ 3 Channel Flux Leakage Tube Testing System for discrimination of OD, ID Defects and Wall Thinning.
- ✓ Ideal for Ferrous Tubing Especially Fan Fin Tubes.
- ✓ Internal Data Logging System with PC Application for Desktop Reporting.
- ✓ Compact rugged site proven enclosure.
- ✓ Easy to Learn and Use Ether User Interface.
- ✓ Daylight readable display.
- ✓ 8 hours battery life on one charge.
- ✓ 2 year warranty.

SteelCheck

SteelCheck is a battery operated 3 channel (Hall Sensor and 2 coil) tube inspection unit for Carbon Steel (Ferromagnetic Tubes) using Magnetic Flux Leakage. Unlike other remote field eddy current method it is unaffected by external Aluminium Fins and has the capability to discriminate between external and internal defects. Packaged as a highly portable, battery operated flaw detector at an attractive price, the SteelCheck offers exceptional value for money.



Calibration Tube Details

Probe	Connector	10way LEMO 2B
	Channels	1 Hall Effect Sensor, 2 coils
	Construction	Stainless Steel/Titanium
	Max Pull	100kg
	Longevity	Greater than 1000 tubes
Gain	Channels	3 independent channels with gain lock
	Range	Gain adjustable 0 to +72dB
	Increments	0.1, 1 and 6 dB Steps
Data Conversion	Bit Depth	12bit
	Sample Rate	5kHz
	Dynamic Range	40dB
Filters	Normal High Pass	DC to 1kHz
	Normal Low Pass	5 to 1kHz
Alarms	Level	Fully configurable, Freeze, Tone or visual.
Display	Type	24bit colour, daylight readable, 5.7" (14.5cm) screen.
	Viewable Area	Horizontal x Vertical - 4.6" x 3.4" (115.2 x 86.4mm)
	Resolution (pixels)	640 x 480
	Configurable Screen	Full Screen, up to 4 panes with variable function.
	Display Modes	Time base (0.1-20 seconds, Stripchart and Waterfall)
	Graticules	None, Grid (4 sizes: 5, 10, 15 at 20% FSH)
	Offset	Trace Position: ± 150%
Storage	Setup	Micro SD up to 32GB, storing over 10,000 settings
	Stored Screens Shots	Micro SD up to 32GB, storing over 10,000 settings
	Inspect	Comprehensive Record, Replay and Storage
Outputs	PC Connectivity	USB (Full PC remote control plus Real Time)
	VGA	Full 15 way VGA output.
Languages		English. Others to follow.
Power	External	100-240v. 50-60Hz. 700mA.
	Battery	Internal 8.4V @ 3200mAH
	Running Time	100% backlight over 8hrs. Over 10.5hrs with 40% backlight.
	Charging Time	2.5hrs charging time. Simultaneous charge and operation.
Physical	Weight	1.2kg (2.7lbs)
	Size (w x h x d)	237.5mm x 144mm x 52mm (9.4" x 5.7" x 2.1")
	Material	Aluminium alloy Mg Si 0.5 powder coated
	Operating Temperature	-20°C to +60°C.
	Storage Temperature	Storage for up to 12 months. -20°C to +35°C. Nominal +20°C.
	IP Rating	IP54

SteelCheck Product

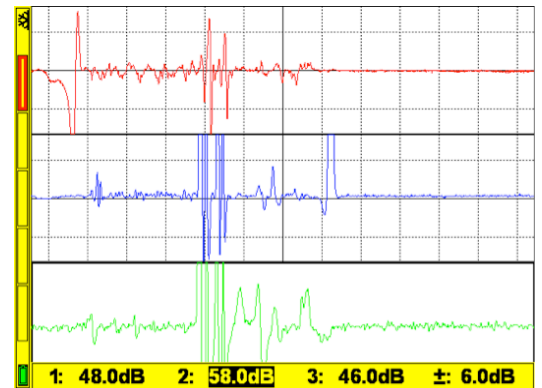
KISTL001 - SteelCheck instrument only, including soft case, charger and manual on USB.

PMFL187-20L10 - Probe for 1" (2.5cm) 12 AWG with 20m (65ft) push pull cable.

ATBTC-254-12SWG
Calibration tube for 1" (2.5cm) 12 AWG tube.

PMFL198-20L10
Probe for 1" (2.5cm) 14 AWG with 20m (65ft) push pull cable.

ATBTC-254-14SWG
Calibration tube for 1" (2.5cm) 14 AWG tube.



Example of a StripChart

ETHER NDE



7952 Nieman Road, Lenexa, KS 66214-1560 USA
Phone: 913-685-0675, Fax: 913-685-1125
www.ndtupply.com, sales@ndtupply.com

