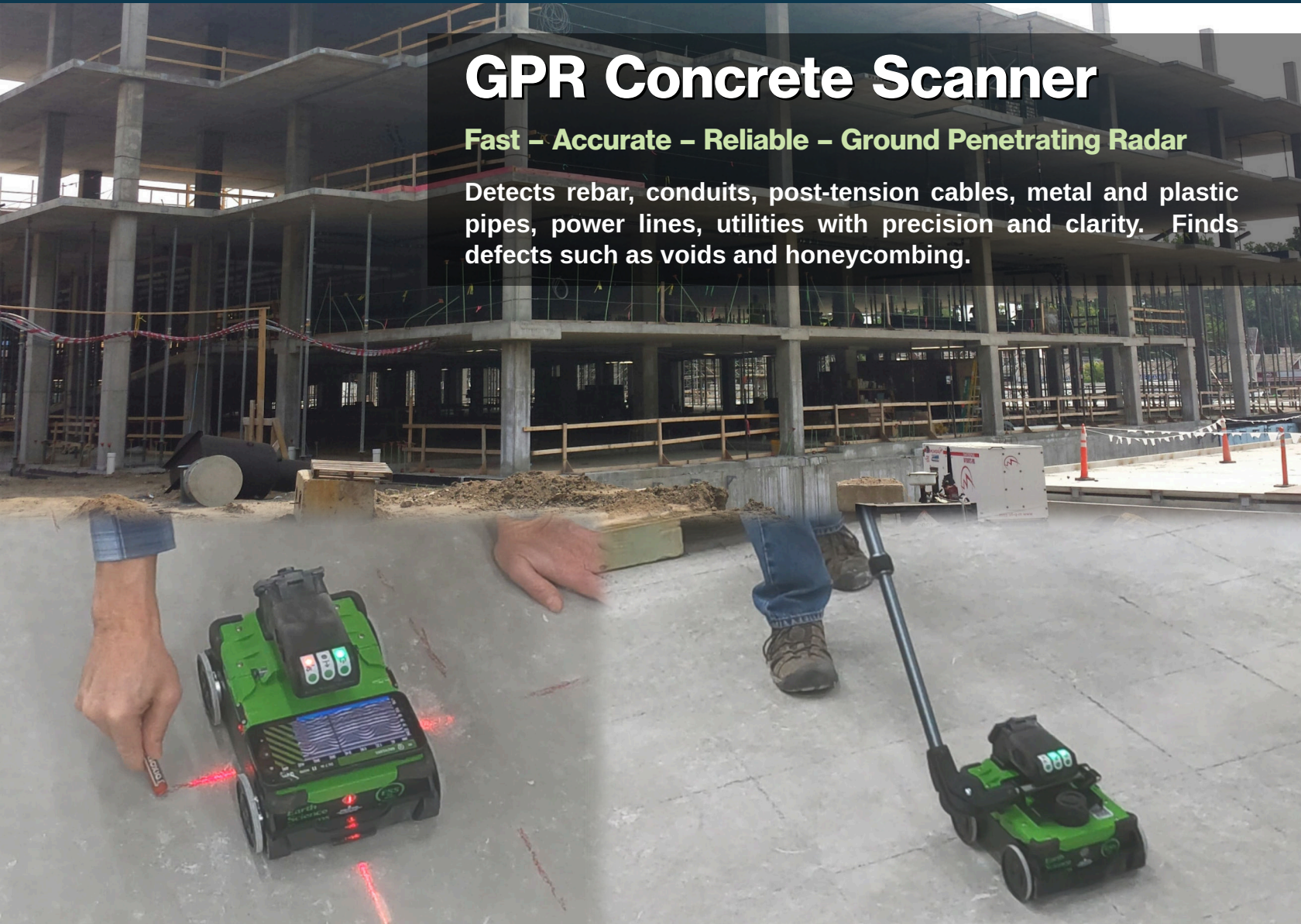




GPR Concrete Scanner

Fast – Accurate – Reliable – Ground Penetrating Radar

Detects rebar, conduits, post-tension cables, metal and plastic pipes, power lines, utilities with precision and clarity. Finds defects such as voids and honeycombing.



The GPR Concrete Scanner delivers cutting-edge ground penetrating radar (GPR) technology in a compact, rugged system built for demanding work conditions. The lightweight scanner is ideal for fast on-site assessments. It offers exceptional performance, speed, and reliability — the complete solution for concrete inspection and structural analysis.

- Clear areas for drilling or cutting
- Locate rebar, post-tension cables, conduits
- GPR and power line detector
- Lightweight ergonomic design
- Rugged IP65 construction
- Attachable wheels and extension arm
- Markouts and cross sections using smart phone or tablet (Android or iOS)
- Advanced analysis, reporting, and cloud sharing using tablet PC



GPR Concrete Scanner

Cutting edge GPR with power line detector and steering guidance

Fast Scans with Smartphone App

Conduct fast 2D scans and markouts using your iOS or Android smart phone or tablet.

Advanced 3D Scans with Tablet

Create 3D interactive visualizations using tablet PC. Get the whole picture by combining surface photo, subsurface radar scans, and delineated targets.

Scan with Guided Steering

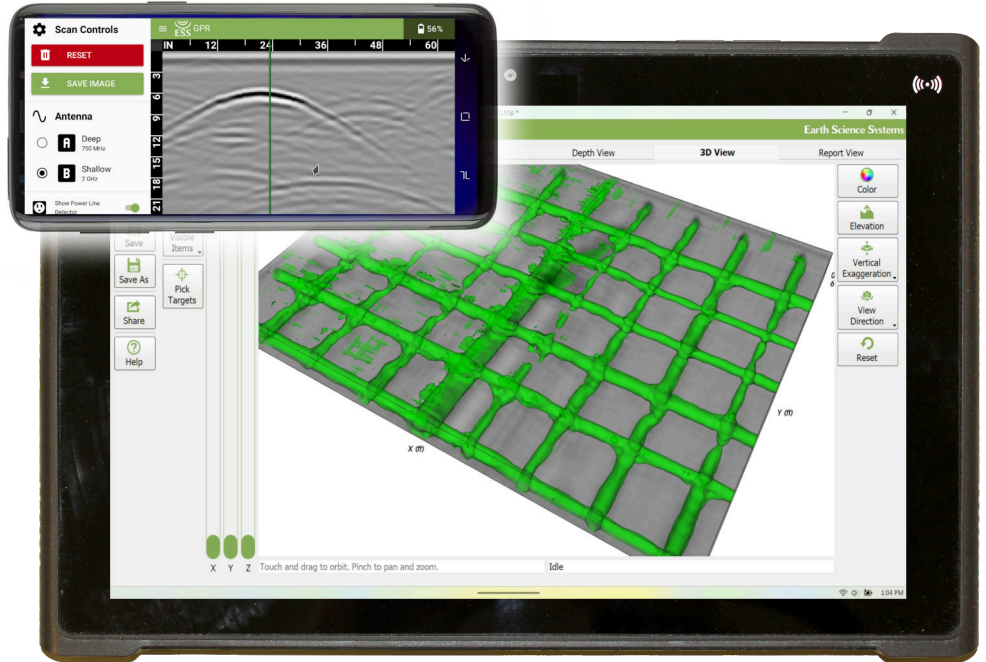
No scan mat needed. Automated tracking enables fast reconnaissance scanning or high resolution grid scans.

Streamlined Report Generator

Quickly create reports with cross sections, depth slices, 3D views, photos, text write-ups, and target tables.

On Site Data Analysis and Reporting

Advanced analysis and reporting software is touch friendly and runs on a tablet PC. No internet connection required. Provide fast results to clients without needing to return to office.



Cloud Sharing

Share reports and interactive 3D views online with clients and team members. Share 3D Web View, KML/KMZ (map viewers and GIS systems), DXF (CAD), PNG (Image), and CSV (spreadsheet)

Complete Structural Analysis System

Includes everything needed to conduct a complete structural analysis or site characterization. Determine cover and thickness. Locate and identify rebar, cables, conduits, honeycombing, and voids.

Optional Accessories

Extension pole and wheel truck for scanning floors, wall and ceilings. Rugged shipping case is recommended for frequent travel.

Specifications

- 2 GHz bi-static radar antenna
- Magnetic field detection of active power circuits or tracer signals
- Rugged tablet PC and/or Smart phone (Android, iOS)
- WiFi-interfaced, fully cable-less operation
- Durable construction with IP65 ingress protection
- Integrated optical odometer
- Line lasers for marking and alignment
- Thumb switches for lasers and data recording
- Rechargeable 3.4Ah Lilon battery with up to 3 hours operation
- Two batteries with dual charger for all day use
- Scanner dimensions: 8.73 x 6.22 x 6.52 inches (22.8 x 15.8 x 16.6 cm)
9.5 x 7.36 x 6.75 inches (24.1 x 18.7 x 17.1 cm) with wheel truck
- Scanner weight: 4.95 lbs. (2.25 kg) including battery (3.5 kg)
4.0 lbs. (1.83 kg) including battery and wheel truck



NDT Supply.com, Inc.
7952 Nieman Road
Lenexa, KS 66214-1560 USA
Phone: (913)-685-0675
Email: sales@ndtsupply.com