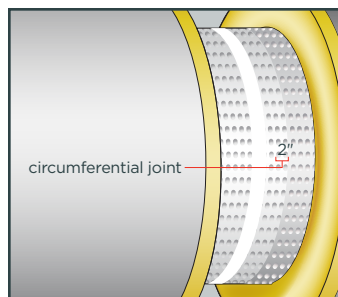
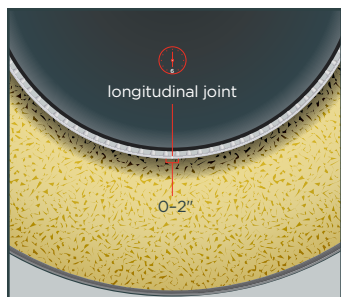
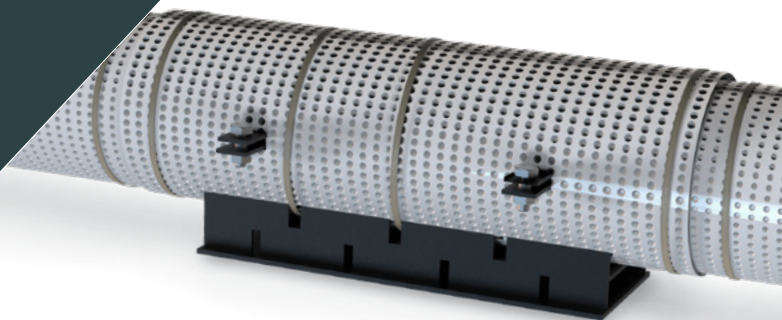


INTEGRITY PRODUCTS

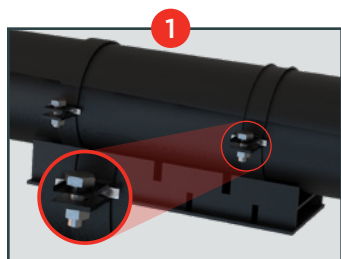
Spacer Wrap

PTFE | CLAMPED PIPE SHOES



IMPORTANT NOTE:

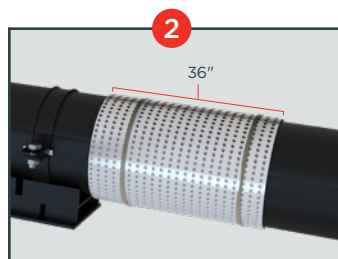
The purpose of the PTFE Spacer Wrap is to create a non-contact insulation system on the entire surface of the pipe and **at no point should the insulation be able to contact the pipe surface**. It is installed dimple side in facing the pipe with the longitudinal joint at the 6 o'clock position. Circumference joints to have a 2" overlap and longitude joint to have 0-2" overlap, as per application requirements.



STEP 1

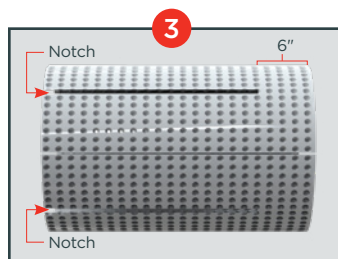
Ensure the surface of the pipe shoe is clean, dry, and free of any damage, hazardous, or sharp objects.

Cut small strips of PTFE, adjust to fit behind the bolt of the pipe clamps.



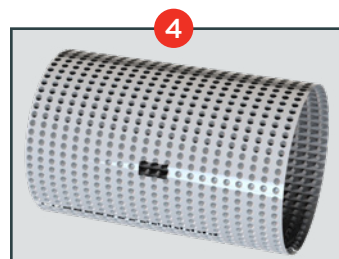
STEP 2

Install PTFE Spacer Wrap over and around the pipe. Place the first 36" section of PTFE up against one end of the shoe, secure into place with our recommended Integrity's High Temperature (HT) cloth glass tape.



STEP 3

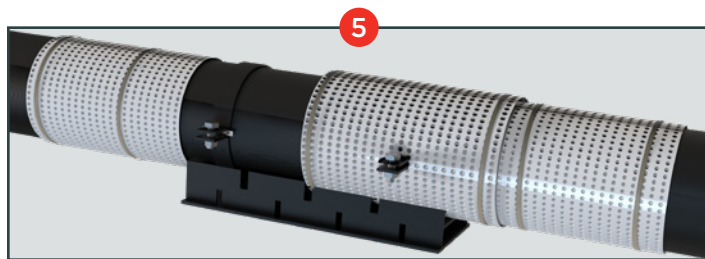
Cut the PTFE Spacer Wrap for each side of the shoes as follow:
 a) Measure and cut each sheet for the circumference of the pipe application and allow for the 2 dimple overlap and 6" on the outer end of the PTFE for extra protection against water ingress.
 b) Measure and cut out notches for particular shoe application.



STEP 4

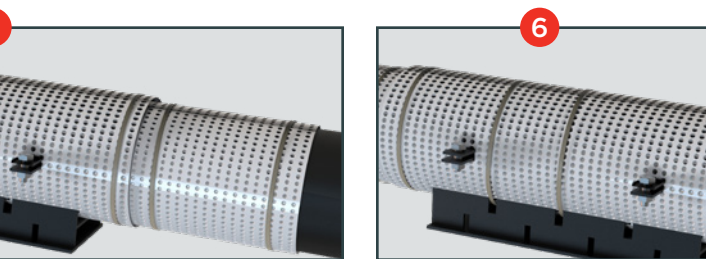
Cut notches to the dimensions of each Pipe clamp to allow fitment of the PTFE Spacer Wrap.

Always wear appropriate PPE (personal protective equipment) which conforms to applicable work safe standards.



STEP 5

Install the PTFE Spacer Wrap by gliding the notched-out sheet and gently guide into proper placement.



STEP 6

This forms a complete coverage of the pipes surface and insulation can be installed as normal

TOOLS REQUIRED

RETRACTABLE KNIFE

ADHESIVE TAPE