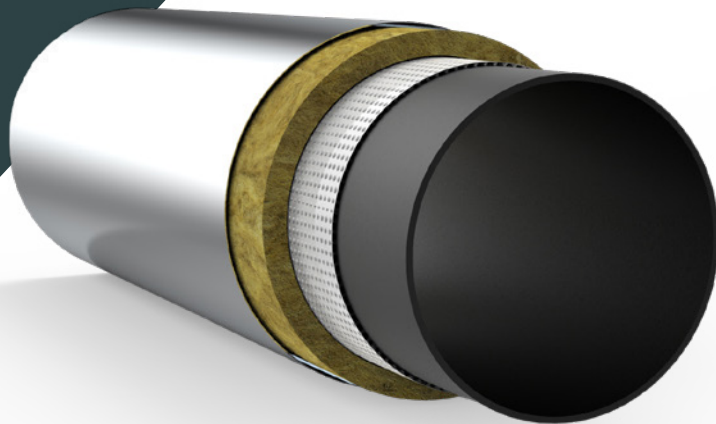


INTEGRITY PRODUCTS

# Spacer Wrap

PTFE



Always wear appropriate PPE (personal protective equipment) which conforms to applicable work safe standards.



## TOOLS REQUIRED



### RETRACTABLE KNIFE

Cut the PTFE spacer wrap using retractable knife



### ADHESIVE TAPE

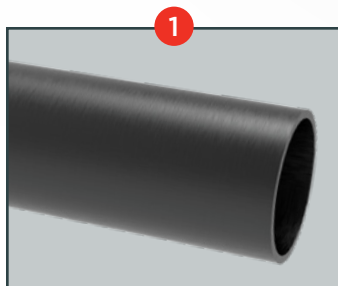
To secure the PTFE use Integrity Products high temperature resistance glass cloth tape.



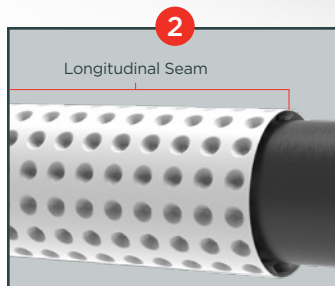
### SCREWS



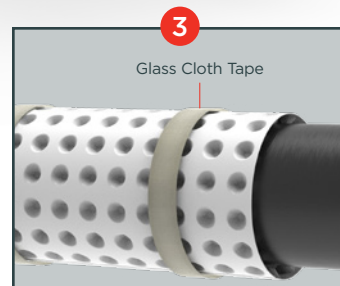
### BANDING



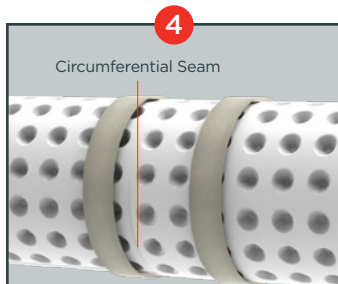
**STEP 1**  
Ensure the pipe surface is clean, dry, and free of any damage, hazardous or sharp objects.



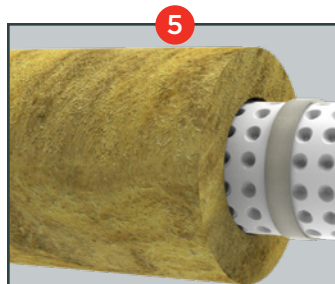
**STEP 2**  
Wrap the PTFE sheet around the pipe and overlap the dimples at the longitudinal seam. Cut the PTFE spacer wrap using retractable knife to match the circumference and needed overlap. User may decide not to overlap at longitudinal seam to allow for low point drainage.  
*Recommended overlap: 2 dimples at minimum.*



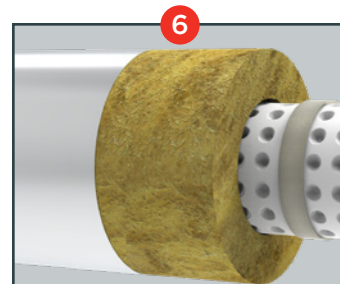
**STEP 3**  
Secure the PTFE on the pipe using Integrity Products high temperature resistance glass cloth tape.



**STEP 4**  
Install the adjacent wrap in the same manner as described in steps 1-3 by allowing the overlap of dimples at circumferential seams.  
*Recommended overlap: 2 dimples at minimum.*



**STEP 5**  
Wrap the insulation over the PTFE wrap. Ensure to oversize the insulation by 1/2" to accommodate the standoff created by PTFE dimple wrap.



**STEP 6**  
Install the jacketing over the insulation and secure the jacketing in place via banding and screws.