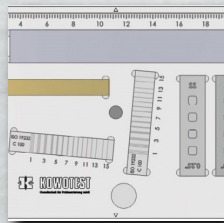
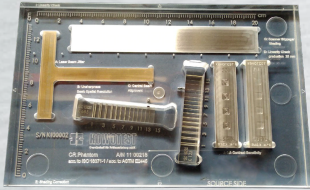


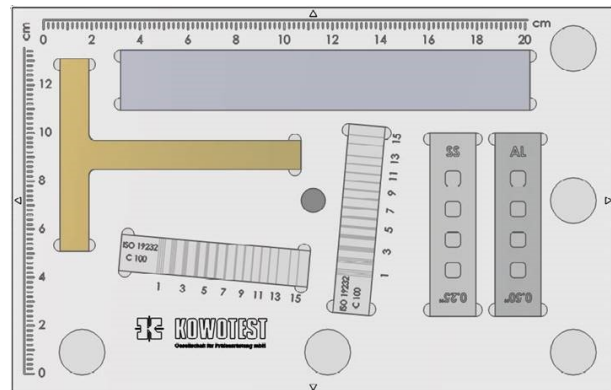
Kowotest Small 6"x10" CR Phantom

Simplified for Testing All Parameters of CR Scanner Systems



A Smaller, Simpler CR Phantom

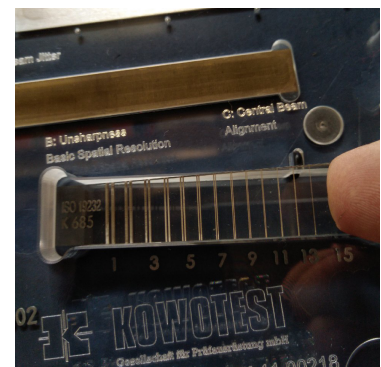
The Basic CR Phantom 6x10" (160 mm x 250 mm) No Duplex IQI is a simplified version of the 14x17" panel. Meets all requirements for testing relevant parameters of CR Scanner Systems, like basic spatial resolution (with added duplex iq), unsharpness, contrast, MTF, laser beam jitter, scanner slipping and shading. These tests are performed periodically according to ASTM E 2445, ISO 16371-1 and EN 14784-1 standards.



CR-Phantom 6x10" (160 x 250 mm), made in accordance to ISO 16371-1, ASTM E 2445

Design Updates

- **Smaller T Target.** Tests can be performed as usual
- **No Duplex IQIs.** These can be put in or taken out easily and be exchanged (D13 and D15 – even D17 would fit but wire numbering would be wrong). Duplex IQI's available for purchase separately or with the panel. See price table for details.
- **No Line Pair Gauges,** type 39. Duplex IQI can be used for resolution tests.
- **Additional Linearity Check test.** Tungsten balls (dia. 1.5 mm) with 25 mm distance for i.e. only 10 cm (4 inch) wide IPs.
- **No Positioning Locator.** As a substitute there are 4 arrows in the middle of each edge to show center of panel.
- **Smaller Al strip.** Tests can be performed as usual.
- **No Contrast Sensitivity Gauge – CU.** Not necessary as at 90 kV copper cannot be irradiated.



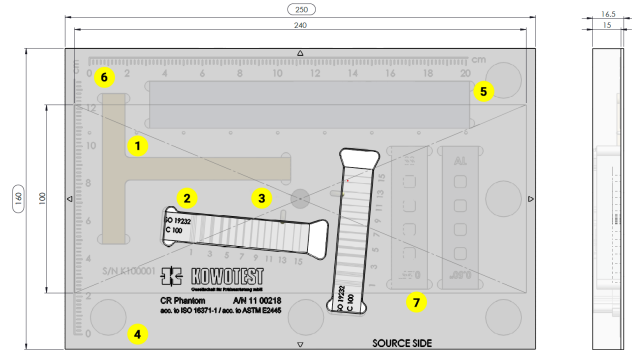
The Duplex IQI can be easily inserted or taken out

Specifications:

(Numbers refer to the diagram on the right)

	Test Material	Application
1	T-Target - Brass	Laser beam jitter, MFT check, blooming (Flare)
2	Duplex Wire Type IQI (If Purchased)	Basic spatial resolution, unsharpness
3	BAM Snail	Central beam alignment
4	EL, EC, ER Measuring Points	Shading correction
5	Homogenous AL Strip	Scanning, slipping, shading
6	Inch / cm Ruler	Linearity check
7	Contrast Sensitivity Gauge	Contrast sensitivity check

Dimensions: 6" x 10" x 0.65" (160 x 250 x 16.5 mm)



Scope of Supply:

- CR Phantom, Type 1, ASTM E2445, no Duplex IQI, 6 x 10" (160 x 250 mm) (RT-KT-11-00218)
- Test Certificates according to ASTM E 2445, EN 14784-1 and ISO 16371-1
- Declaration of Conformity according to EN 45014.
- Wood Case

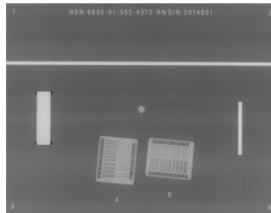
Description	Part #	Saved	Price	Add to		
CR Phantom, Type 1, ASTM E2445, no Duplex IQI, 6 x 10" (160 x 250 mm), including test certificate and wood case	RT-KT-11-00218		\$4,775.00	<input type="text" value="1"/>	Quote	Cart
Kowotest Duplex IQI, D-13 (11 00155)	RT-KT-DUPLEX-D13		\$1,450.00	<input type="text" value="1"/>	Quote	Cart
Kowotest Duplex IQI, D-15 (11 00160)	RT-KT-DUPLEX-D15		\$1,850.00	<input type="text" value="1"/>	Quote	Cart
Kowotest Duplex Wire Type IQI, ISO 19232-5, ASTM E2002, 17D UHiRes (11 00165)	RT-KT-DUPLEX-D17		\$2,400.00	<input type="text" value="1"/>	Quote	Cart



Similar Items



Kowotest CR Phantom



Kowotest USAF CR Phantom Panel



Kowotest Duplex Penetrator

[Products](#)

[Customer Support](#)

[FAQ](#)

[About Us](#)


[Blog](#)

[Terms & Conditions](#)

[International Services](#)



NDT Supply.com, Inc.
7952 Nieman Road
Lenexa, KS 66214-1560 USA
Phone: (913)-685-0675
Fax: (913)-685-1125
Email Us: [✉](#)

 **Have Questions?
Contact Us**



A Woman Owned & Veteran Directed Small Business

Copyright © 2021 ndtsupply.com
Website Design by IQnection - A Digital Marketing Agency

