



Penetrant Professor Approved

Product Data Sheet

CFF-2000

Ceramic Flaw Finder

1  
11/2015



Met-L-Chek Company manufactures a complete line of Nondestructive Testing Materials. Met-L-Chek Company supplies fluorescent and visible dye penetrants, wet and dry magnetic particles and a variety of specialty testing materials. All Met-L-Chek Company products are designed to yield maximum value through quality, cost, and usability. Met-L-Chek Company products are sold under the **Met-L-Chek**® and **Pen-Chek**® trademarks. Met-L-Chek Company products are manufactured under license in The Netherlands by NDT Europa.

Ceramic Flaw Finder **CFF-2000** is used to locate surface cracks in porous bodies such as un-fired sanitary ware, electrical insulators, powdered metals, and dinnerware. It is a brilliant fluorescent chartreuse inspection material. **CFF-2000** is safe to use on ceramic materials and all residue fires off in the kiln.

**CFF-2000** is available in two forms. The regular **CFF-2000** is supplied as a ready to use liquid in one gallon, 5 gallon, and 55 gallon sizes. It is applied by first thoroughly mixing the material to resuspend the fluorescent particles and then flowing the material over the test part or spraying the material onto the test surface. After a few seconds, the surface liquid is absorbed into the ceramic and the part may be inspected with a high intensity UV-A (ultra violet) lamp. Cracks, tool marks, pits and other defects show up instantly as brilliant chartreuse fluorescent indications against a subdued fluorescent background. An alternate inspection procedure may include spraying the part with a light mist of water first, allowing the water to absorb, and then spraying with the **CFF-2000**.

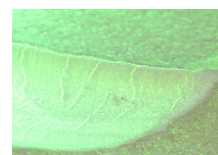
**CFF-2000C** is a concentrated version and is designed to be diluted by the user to the desired brightness. A 5 gallon pail of the concentrate is designed to make a full 55 gallon drum of the ready-to-use inspection fluid. The concentrate should be mixed with any petroleum solvent similar to kerosene or Met-L-Chek® **E-59**.

**Typical Physical Properties**

Form: clear liquid with fluorescent particles  
Density: 787 g/L  
Flash Point: > 62.2°C (>144°F)  
Fluorescence: chartreuse  
Mercury: none  
Ozone layer depleting substances: none  
The warranty shelf life of the product is 3 years from date of batch approval.

**Product Availability**

1 gallon (3.7L) metal can  
5 gallon (18.9L) metal pail  
55 gallon (208L) metal drum



**CFF-2000**

Crack indications on unfired electrical insulator

**GHS Information**



**Danger**

**GHS Hazard Statements:**

- H227:** Combustible liquid.
- H304:** May be fatal if swallowed and enters airways.
- H315:** Causes skin irritation.
- H336:** May cause drowsiness or dizziness.
- H412:** Harmful to aquatic life with long lasting effects.

**GHS Precautionary statements:**

- P102:** Keep out of reach of children.
- P210:** Keep away from heat, hot surfaces, sparks, open flames and other ignition sources. No smoking.
- P261:** Avoid breathing dust/fumes/gas/mist/vapors/spray.
- P264:** Wash skin thoroughly after handling.
- P271:** Use only outdoors or in well-ventilated area.
- P273:** Avoid release to the environment.
- P280:** Wear protective glove/clothing/eye protection/face protection.
- P284:** In case of inadequate ventilation wear respiratory protection.



**GHS response statements:**

- IF INHALED:** Remove person to fresh air and keep comfortable for breathing, get medical advice/attention if you feel unwell.
- IF ON SKIN:** Wash with plenty of water. If skin irritation occurs, get medical advice/attention.
- IF IN EYES:** Rinse cautiously with water for several minutes. Remove contact lenses, if present and easily to do. Continue rinsing, get medical attention.
- IF SWALLOWED:** Immediately call a poison center/doctor/physician. Do Not induce vomiting.
- IF ON CLOTHING:** Take off contaminated clothing and wash it before reuse.

**Transport:**

- DOT- not regulated < 450 L or 119 Gal containers
- IATA- not regulated
- IMDG- not regulated

**NDT Supply.com, Inc.**  
7952 Nieman Road  
Lenexa, KS 66214-1560 USA

Phone: 913-685-0675, Fax: 913-685-1125  
e-mail: [sales@ndtsupply.com](mailto:sales@ndtsupply.com), [www.ndtsupply.com](http://www.ndtsupply.com)

