

OKOndt SmartScan Aircraft Wheel Inspection System

The Cutting Edge of Eddy Current Wheel Testing

The OKOndt SmartScan FA is a high quality, professionally designed, easy-to-use automated Eddy Current Wheel Inspection System for inspection of aircraft main and nose wheels. Wheel compatibility has been confirmed for various manufacturers including Messier-Bugatti, Goodrich, Honeywell, Meggit and more. The system provides automated testing in compliance with ISO 15548-1. Includes a 2 Year Warranty

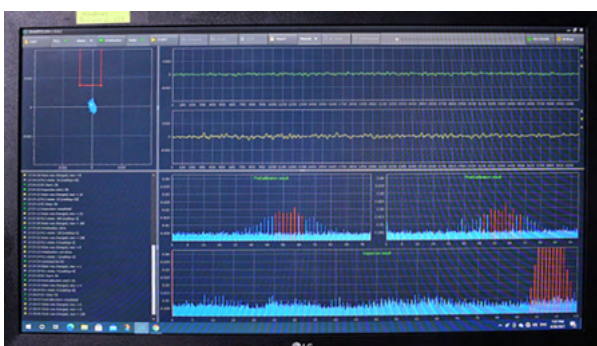


100% Automated • User Friendly • Low Maintenance

The OKOndt SmartScan FA provides fully automated wheel inspection with storage of inspection results, database creation and more using the included PC and Eddycon D Flaw Detector

Key Benefits

- 100% Automated Inspection of Wheel Halves
- Handles wheels up to 35" OD / 8" ID
- Complete testing of wheel tubewell, bead seat and flange
- Compact Design
- Low maintenance – built with high-quality off-the-shelf components
- Simple and User-Friendly Controls and Software
- Quick User Setup and Inspection – Save and load inspection setups for each wheel
- Automated performance verification
- Domestic and Global Service and Support

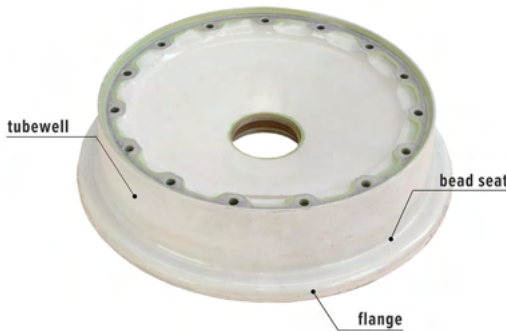


Automated Performance Verification



Fully Featured Control Panel with Pause Button

Features



- Dual control - system can be controlled from the control panel or PC software interface
- Manual and automatic stop on defects
- Return to defect function
- Wheel inspection in either "flange up" or "flange down" positions
- Automatic wheel hub grip mechanism – locking pins position and lock wheels in place for testing
- Automated performance verification – the probe scans the reference block before and after each test and records the results
- Remote "pause" switch allows for rapid stop and restart – ideal for quickly locating and manually confirming indications
- Test reports are automatically generated after each inspection
- Lemo 00 and Lemo 12 (reflection and bridge) connectors located on front of control panel for manual inspection
- Ethernet connectivity – connect to local network for file storage and backup
- Large high resolution color display for main controls plus secondary color monitor with camera for overhead close-up view of wheel position and locking
- Eddy current technology supported by the built-in state-of-the-art EddyCon D universal multi-channel Eddy Current Flaw Detector
- New Feature - After testing is complete, if any defects were found the probe will automatically be brought to the defect area (within +/- 15 ml on the horizontal axis)

Available in Two Models

SmartScan FA

Fully Automatic

The SmartScan FA model enables a fully automated cycle of inspection, with a stop on defect mode, storage of inspection results and database creation, as well as printouts of inspection reports, etc. The SmartScan FA kit includes the Eddycon D flaw detector.

SmartScan

Semi-Automatic

The SmartScan model enables a semi-automated inspection of wheels with portable eddy current flaw detectors of different manufacturers. The Smartscan kit includes the Eddycon C flaw detector.

Standard System Includes

- Table (frame) with a tray for wheels
- Wheel hub grip mechanism
- Wheel lifting / lowering mechanism
- Wheel rotating mechanism
- Mechanism for ECP movement in horizontal and vertical planes
- Support for the reference block
- System control panel
- Swing Arm with large color display
- Secondary color display with camera
- System documentation including electrical and mechanical schematics and certification
- Crating and shipping to nearest airport
- OKOndt guarantees after-sales support for a minimum of 10 years in service
- 2 Year Warranty

Technical Specifications

Specification	SmartScan FA	SmartScan
System Type	Fully Automated	Semi-Automated
Overall Dimensions	31" x 39" x 49" (790 x 990 x 1250 mm)	31" x 39" x 49" (790 x 990 x 1250 mm)
Weight	No more than 771 lbs (350 kg)	No more than 771 lbs (350 kg)
Flaw Detector	Eddycon D	Eddycon C
ECP Type	Pencil probe type with a cylindrical head. Frequency — 100 kHz, 200 kHz, 500 kHz ECP diameter – 15" 64' (6 mm) Other standard ECP types – on request	Pencil probe type with a cylindrical head. Frequency — 200 kHz ECP diameter – 15" 64' (6 mm) Other standard ECP types – on request
Compatible Wheel Outer Diameter	Minimum: 7.5" (190 mm) / Maximum: 35" (889 mm)	Minimum: 7.5" (190 mm) / Maximum: 35" (889 mm)
Compatible Wheel Inner Diameter	Minimum: 1.57" (40 mm) / Maximum: 8" (200 mm)	Minimum: 1.57" (40 mm) / Maximum: 8" (200 mm)
Max. System Load	330 lbs (150 kg)	330 lbs (150 kg)
Inspection Helix	Adjustable from .004" to .08" (from 0.1 to 2 mm)	Adjustable from .004" to .08" (from 0.1 to 2 mm)
Inspection Area	Adaptive tracking of the wheel profile surface	Adaptive tracking of the wheel profile surface
ECP Vertical Movement	17 in. (430 mm)	17 in. (430 mm)
Rotation Speed	10-120 rpm	10-120 rpm
Inspection Speed	up to 75 fps (23 m/s)	Determined by parameters of the customer's hand-held device
Alarms	Visual and Audible	Determined by parameters of the customer's hand-held device
Power Supply	100-240 V, 50/60 Hz	100-240 V, 50/60 Hz
Data Recording and Storage	Yes (PC hard drive, database)	Determined by parameters of the customer's hand-held device
Manual Inspection	Yes - Lemo 00 and Lemo 12 (reflection and bridge) connectors	Yes
Remote Pause Button	Yes	Yes
Wheel Position	Flange up/Flange down	Flange up/Flange down
Automatic Reference Block Calibration	Yes	Yes
Automatic Stop on Defect	Yes	No
Turntable	Rubber/plastic coated rolls	Rubber/plastic coated rolls
Control Panel	Built-in	Built-in
Operation Modes	Block, Manual (with automatic reference block calibration), Stop on defect, Automated	Block, Manual, Automated (with automatic reference block calibration)
Ports	3 – USB ports, HDMI or Display port, Ethernet port	3 – USB ports, HDMI or Display port, Ethernet port
PC Computer Set	Wireless keyboard and mouse, monitor, system unit, special purpose software	Wireless keyboard and mouse, monitor, system unit, special purpose software
Adapter Set	For wheels without hubs PN: C20626200 (SAFRAN), PN: 3-1674 (GOODRICH)	For wheels without hubs PN: C20626200 (SAFRAN), PN: 3-1674 (GOODRICH)
Warranty	1 year from date of delivery	1 year from date of delivery

SmartScan FA Kit Includes

No.	Item	Qty.
1	The eddy current tester "SMARTSCAN-FA"(with calibration block, keyboard, mouse, minimum 21" high resolution monitor with swing arm mount, secondary display with camera mount and semi-flexible arm; control analysis software (settings program, testing program, viewing program)	1 set
2	Eddycon D eddy current flaw detector – built-in	1 pc
3	Connecting cable. Lemo 00 – BNC (length – 2.5 m)	2 pcs
4	Wheel hub adapters	3 sets
5	Adapter for wheel control without hub. p/n C20626200 (SAFRAN), p/n 3-1674 (GOODRICH)	1 pc
6	Spacer (washer) for wheels with protruding locks	1 pc
7	Printer for inspection result output	1 pc
8	Eddy current probe 200 kHz (SU200K6D-380SSh)	3 pcs
9	Technical Materials: <ul style="list-style-type: none"> • Operator Manual; • Maintenance Manual; • Operator and Software Manual (USB-flash card); • Software Installation Manual; Other technical articles (Schematics, catalogs, drawings, brochures, etc.)	1 set
10	Certificates	1 set
11	Spare parts (Inductive sensors SIEA, Inductive sensors SIES, Proximity sensors)	1 set
12	2 Year Warranty	

