

OPTICAM 150' Mini Reel Mini Camera Head



QUOTE

QUOTATION FOR		
Qty.	Product	Price
Total		

Customer Contact	
Name	
Address	
City St Zip	
Phone	

Sales Contact

PRODUCT OVERVIEW

The Opticam system has a user-friendly keypad and easy "One Touch" recording and snapshot buttons to help speed up inspection time. Technicians can easily record vital inspection data and client information using the available on-screen text-writer and footage counter. Built with a 0.85" mini-camera head that is geared to inspect sewer pipes from 1 1/2" straight up to 4" inch diameter and a built-in sonde which broadcasts a 512 Hz frequency which is locatable with a 512 Hz locator.

FEATURES AND BENEFITS

Wi-Fi Streaming to Apple or Android

View, record, snapshot and share inspection videos.



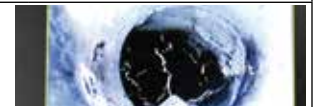
One Touch Recording to USB

Record and take pictures during inspection.



On-Screen Footage Counter

View the distance pushed and displayed on screen.



Built-in Microphone and Speaker

Record voiceover video and play it back.



Keypad and On-Screen Text Enabled

Type in vital information to display and record on video.



Built-in Always on 512Hz Sonde

Broadcast a 512Hz signal to be locatable with a locator.



ACCESSORIES INCLUDED WITH THE SYSTEM



Debris Cover 2" & 3" Skids USB Stick Accessory Bag DC Power AC Power S-Tool

OPTIONAL ADD ONS



External Battery Locator 128 GB Internal Memory



OPTICAM 150' Mini Reel Mini Camera Head



WiFi Video Streaming App

Now you can stream wireless video of your inspection on your Android or IOS device up to 100 feet away from the Opticam system. Record video, take snapshots, playback and email your inspections to your customers via the Insight Vision App available on Google Play and Apple stores.



COMMAND MODULE

Case Dimensions	14 1/2" W x 5" H x 11 1/4" D
Data Storage	8GB USB WiFi Drive
Keyboard	Full "Qwerty" Style Membrane
Distance Counter	On Screen In Feet or Meters
Video Picture Format	H.264, JPEG
Controls	One Touch Recording Snapshot
Weight	8.0 Lbs
LCD Size	10.4"
Power Source	12V 5 Amp DC, AC, and Optional Battery

10.4" LCD Screen



Speaker & Microphone

Qwerty Keypad

One Touch Recording Snapshot

MINI CAMERA HEAD

Dimensions	0.85" Diameter x 1.3" L
Self-Leveling	No
Camera Resolution	1280 x 960 (600 TV Lines)
Weight	2.4 Ounces (with sonde & pigtail)
Image Sensor	1/4" PH3299
Imager Sensitivity	0.5 Lux
Camera Body	Stainless Steel
Camera Lens	Sapphire Glass
Light Ring	12 Dimmable Super Bright LED's
LED Window	Polycarbonate



0.85" Diameter

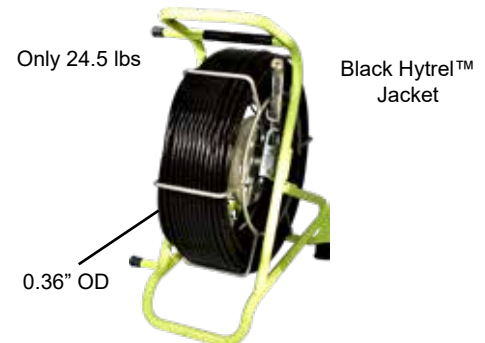
Sapphire Glass

512 Hz Sonde

Stainless Steel Body

MINI REEL

Cable Length	150 Ft Length
Cable Exterior	Black Hytel™ Jacket
Cable Core	Fiberglass Rod
Push Rod Diameter	0.36" OD
Dimensions	17 1/2" L x 8 3/4" W x 23 1/2" H
Weight	24.5 Lbs
Sonde Frequency	512 Hz
Protective Skids	1.1" & 2" *Included With System



Only 24.5 lbs

Black Hytel™ Jacket

0.36" OD