

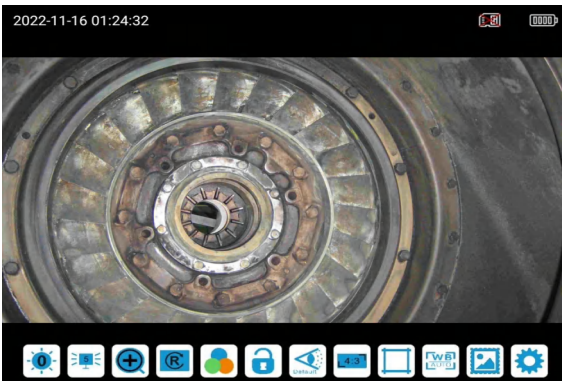
# P + SERIES

## Industrial Videoscope



Yateks **P+ Series** industrial videoscope is a new product that is fully upgraded based on the Yateks P Series. The upgraded P+ Series is compatible with the latest technology probes offering many more inspection options. In addition to direct and side-view dual megapixel probes, there are also 2 megapixel direct-view probes options. This HD image is for better reproduction of defect details. The addition of a USB Type-C interface and WiFi functionality makes the detection more efficient and faster. The new UI interface and user-friendly operation design makes for an easier operator and user experience.

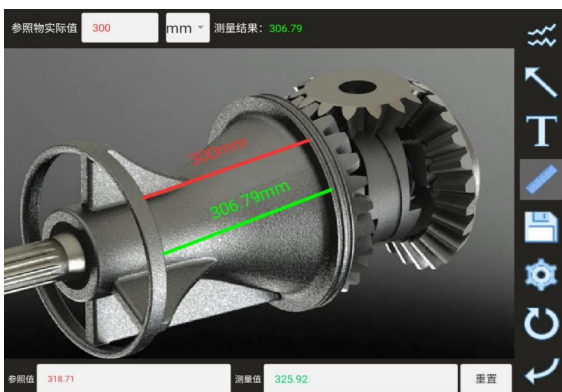
## Technical Advantages :



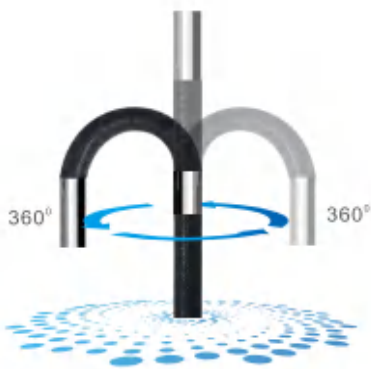
- Brand-new user-friendly software interface, sensitive touch buttons, Instant electric control joystick, Precise positioning, Easy and simple operation and, Image and video annotation function.



- Dual camera with 2 megapixel resolution (front) which provide more options for probes.



- Relative measurement function to find the detection area quickly and precisely.



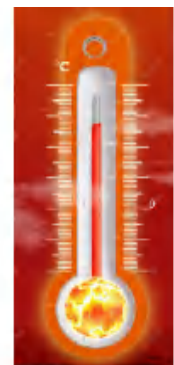
- ⊗ Electronic magnetic rocker joystick gives probe 360° directional control



- ⊗ Step-by-step probe setting system provides precise and repeatable probe articulation



- ⊗ Different probe working lengths and diameters offer inspection application flexibility



- ⊗ High temperature warning sensor : 70°C yellow, 80°C red warnings



- ⊗ USB Type-C interface & HDMI output.

- ⊗ Wireless, Multi-screen display for easy image/video sharing

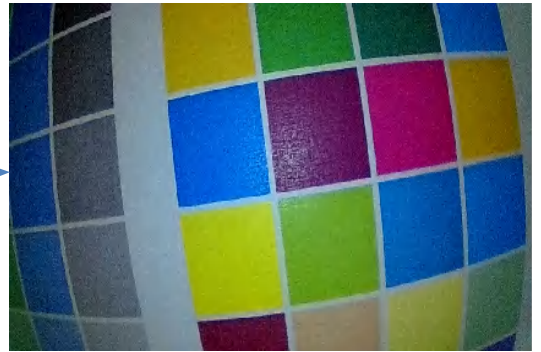
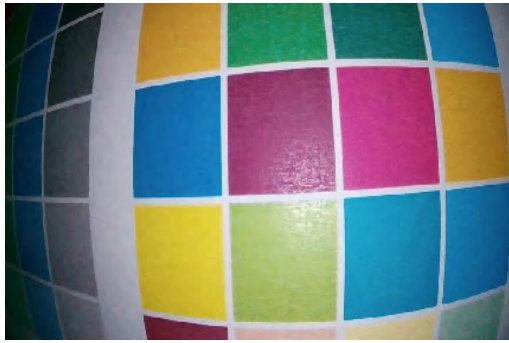
# Technical Advantages:

⊗ Improved image clarity and reflection suppression

Before

After

Color board comparison



Welding stainless steel workpieces



Rusty casting workpiece

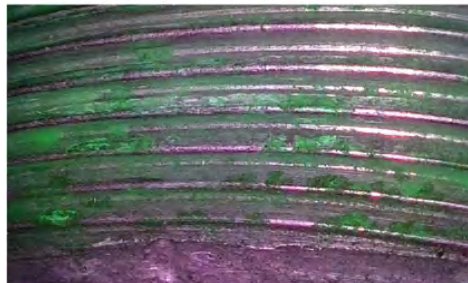


Automatically identify rusted parts or abnormalities

Regular



Enhanced



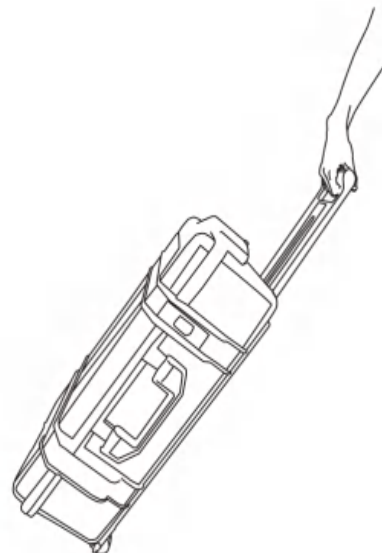
- ⊗ Reinforcing support piece added to prevent probe damage at the base of the hand-held unit



- ⊗ **Industries & Applications:** Aviation & Aerospace, Electrical Production and Construction, Railway, Ship, Construction Engineering, Automotive Manufacturing, Energy & Electricity, Automotive Maintenance



- ⊗ **Carrying Case:** Portable convenient trolley box packaging



	Category	Description
<b>System</b>	Dimension/Weight	246*321*123mm/2.3KG
	Display screen	8" IPS industrial HD touch LCD screen with resolution 1024*768(ratio 4:3)
	Control Lever	Electric rocker with lens able to rotate in 360-degree, automatic set, direction fine tuning adjustable
	Functions	Photography, video, brightness control, locking and fine-tuning
	Storage	32G high-speed SD card (UP TO 128G)
	I/O port	SD card port, HDMI port, Type C charging port
	Battery/Standby time	Four 18650 Lithium batteries(replaceable)
	Brightness control	10 degrees brightness adjustment
	Combining form	Monitor + probe +cable , detachable
	Compatibility	Support different diameter probes
	<b>Software</b>	Operation system
User interface		Touch screen operation menu
File management		Support image and video play, delete, format memo and naming
Image control		Zoom in/out,playback,picture freeze-frame,image reversal,mirror image
Image format/Video format		JPEG, JPG/AVI(record date and time)
Language		Chinese/English/Chinese/Korean/German/Russian/Japanese/panish/Portuguese
Measurement		Reference grid/ Reference measurement function
Color settings		4 modes for different applications
White balance		Automatic/manual white balance
Exposure mode		Automatic/manual/
Upgrade		by SD card service pack
<b>Operating environment</b>	Monitor working temperature	-10 ~ 50°
	video probe working temperature	-20 ~ 70°
	Waterproof	Probe IP67



White

IR

UV

## Supports different options of insertion tube

Probe Diameter [mm]	Camera Location			Light Source			Illumination Way		Articulation	
	Front	Side	Dual	White LED	IR	UV	Fiber	LED	180°	360°
1.1	✓			✓						
1.7	✓			✓				✓	✓	
2.2	✓			✓		✓		✓	✓	
2.8	✓			✓				✓		✓
3.9	✓	✓	✓	✓		✓	✓	✓		✓
6	✓	✓	✓	✓	✓	✓	✓	✓		✓
8.4	✓			✓				✓		✓