

INTEGRITY PRODUCTS

Pipe Seal



Always wear appropriate PPE (personal protective equipment) which conforms to applicable work safe standards.



A



GROOVE FOR BANDING

GROOVE FOR CLADDING

TOOLS REQUIRED



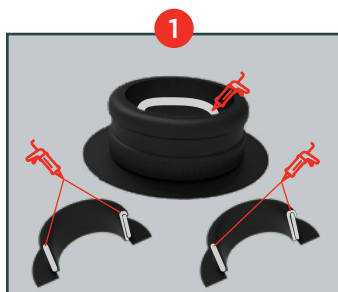
SILICONE SEALANT



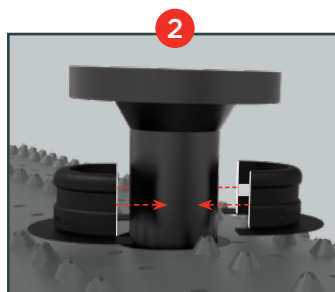
BANDING



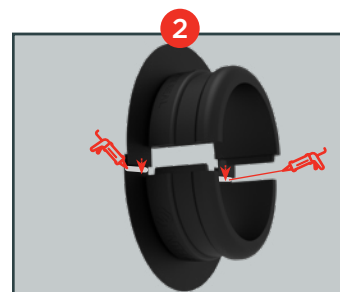
TIN SNIPS



STEP 1
Apply Sealant around the inner circumference of the Integrity Pipe Seal as well as on the connecting faces of the left and right sides.



STEP 2A
Install left and right sides of the Integrity Pipe Seal around the pipe protrusion.

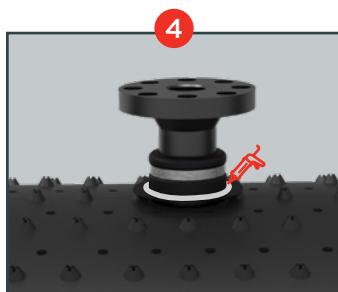


STEP 2B
If the application is not in the 12-clock position, ensure that the tabs face over the bottom section to allow for watershed.

NOTE: We recommend using the Integrity Pipe Seal in conjunction with our other products as part of a comprehensive CUI mitigation strategy. The Integrity Pipe Seal is available in various sizes and can be used with all insulation types.



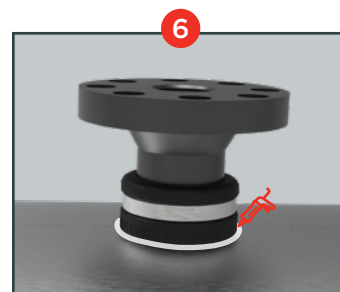
STEP 3
Insert the banding in the groove and tightly secure it into place. Apply a bead of sealant around the top circumference of the Integrity Pipe Seal.



STEP 4
Apply a bead of sealant around the cladding groove at the base of the Integrity Pipe Seal.



STEP 5
To accommodate the Integrity Pipe Seal, cut a hole in the cladding 1/2" larger than the pipe size to which the Integrity Pipe Seal is being applied.



STEP 6
Once Cladding is installed, add a bead of sealant around the outer circumference of the Integrity Pipe Seal.

NDT Supply.com, Inc.
7952 Nieman Road
Lenexa, KS 66214-1560 USA

Phone: 913-685-0675, Fax: 913-685-1125
e-mail: sales@ndtsupply.com, www.ndtsupply.com

