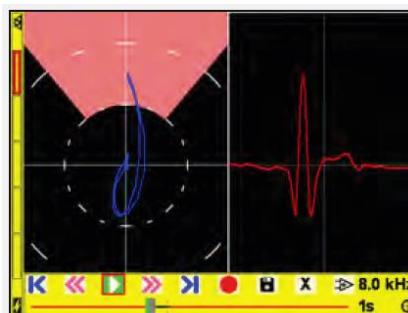


Rotating Drive

ARD002 – Small Rotating Drive



Application:

Eddy current rotary inspections of fastener holes and countersinks are performed routinely in the Aircraft Maintenance Industry and now the method is also being used increasingly in the power generation industry for the inspection of bolt-holes on wind turbines. High-speed surface inspection is also another area of increasing usage.

- Hole Inspection
- Countersink Inspection
- Surface Inspection

The **Mercury Rotary Drive** is perfect for tight spaces and is designed and manufactured in-house. It uses our standard rotating probe range as shown on page 30.

The Mercury Rotary Drive is compatible with:

- AeroCheck
- Vantage G2
- ETi-200
- Hocking Phasec 2 & 3
- Industry Standard 4 Pin Fischer Rotary Probes

Part Number:

ETHer NDE Part No.	Description	Specification
ARD002	Accessory, Rotating Drive, Small, Lemo 12-Way. (MERCURY)	Rotation Speed - 3000, 2700, 2400, 2100, 1800, 1500, 1200, 1020, 840 and 600 rpm Dimensions - Height: 80.9mm, Width: 25mm, Length: 34.5mm Weight – 300grams

Leads to fit above probes:

ETHer NDE Part No.	Description	Instrument
ALL12-L12-020M	Accessory, Lead, Lemo 12-Way - Lemo 12-Way, 2.0m (Rotating Drive)	AeroCheck/Vantage G2/ETi/Hocking

