

Reporting: Generating reports is fast and easy with the *Analyst X™* Software. Automated reporting allows you to create a report with the click of a button. The report includes your scan plan information and all the B-Scans associated with the vessel. You can create a B-Scan overlay to show how the different scans compare to one another, and you can print a chart of the high, average, and low thickness values of each scan. A data table of thickness values and a C-Scan view can also be printed to include in your report.

Re-gating: Should there be any noise in the data, it can easily be cleaned up with the re-gating function. The re-gating function allows a selected region or the entire scan to be re-gated to help efficiently reduce noise interference. The gates are easy to manipulate and can be altered simply by clicking and dragging.

Real-time view: As the scanner is mapping the corrosion, the data appears on the screen in real-time. This allows you to monitor the data and make adjustments to the gain during the scan.

Repositioning: When a scan is in progress, the scan can be paused and resumed. If there is an obstruction, the scanner can be repositioned and will resume scanning at the new position.

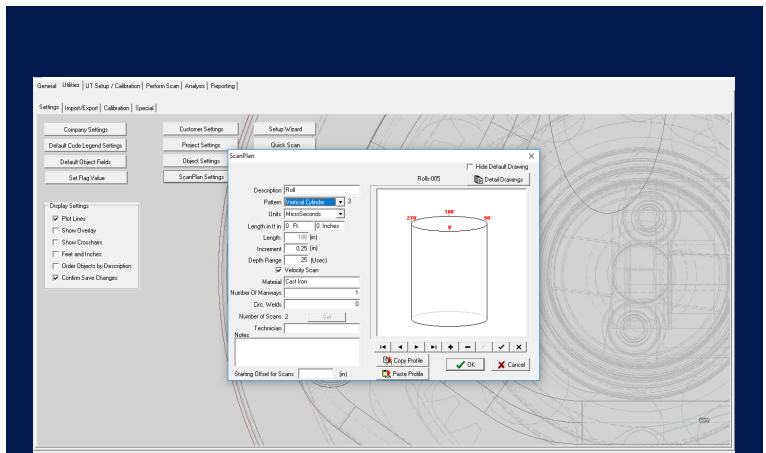
Analysis: Once your scan is complete, you have the option to add weld lines, flag values, re-gate the data, and perform statistical analysis on the data.

Adaptability: *Analyst X™* is designed to be used for both the X2 Spider System as well as the Dual-Channel Dryer Scanning System. During setup, you can choose the type of vessel to be scanned and the software will automatically switch to the correct data acquisition mode.

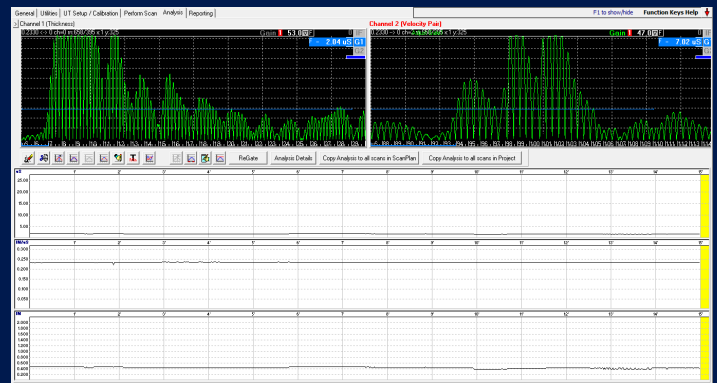
Gain and Frequency: For dual-channel transducers, the software allows for the gain and frequency of the velocity and thickness data to be adjusted independently of one another.

System Requirements

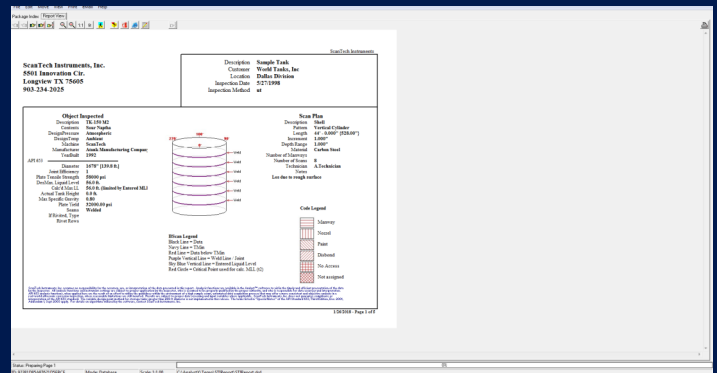
OS	Windows 10/8.1/8/7 (32 and 64-bit)
Processor	Any Intel or AMD x86-64 processor
RAM	4 GB (8 GB recommended)
Disk Space	1 TB
Graphics	No specific graphics card required



Setup: After setting up the scan dimensions initially, scan settings are saved so you can efficiently complete a set of scans



Real-Time View: The software displays the A-Scan and B-Scan data in real-time during the scan.



Reporting: Reports can be generated with a click of the button with automated reporting

NDT Supply.com, Inc.
7952 Nieman Road
Lenexa, KS 66214-1560 USA

Phone: 913-685-0675, Fax: 913-685-1125
e-mail: sales@ndtsupply.com, www.ndtsupply.com

