



50 | Microns

10 | Lpmm

29 | Pounds

The **SignalX IR-192** is a rugged and mobile multi-application non-destructive imager built for portability. Using advanced CR technology, the **SignalX IR-192** is the perfect solution for advanced non-destructive testing applications. The small form factor and collapsible imaging conveyor make the **SignalX IR-192** a strong choice when working with important and vital components such as pipe welds and joints in challenging, remote locations. Using the True Flat Scan Path process, the **SignalX IR-192** will get the job done with considerable ease and efficiency while prolonging the life of your imaging plates. Do more with **SignalX IR-192**.



# SIGNALX

## IR-192



7952 Nieman Road, Lenexa, KS 66214-1560 USA  
Phone: 913-685-0675, Fax: 913-685-1125  
[www.ndtsupply.com](http://www.ndtsupply.com), [sales@ndtsupply.com](mailto:sales@ndtsupply.com)

The SignalX IR-192 is a compact, rugged, high resolution imager designed specifically to aid in inspecting pipe welds, joints, and potential fractures in the surfaces of industrial lines. The image conveyor can work with phosphor plates up to 96" long and 5" wide, allowing for the imaging of pipes of multiple diameters. The IR-192 is light enough to be carried into the field and operated by a portable power supply.

### SPECIFICATIONS\*

Grayscale resolution	16 bits/pixel source file, 65536 shades of gray
Pixel Pitch	25, 50, 100, 150, 200
Scanning Process	True Flat Scan Path, Magnetic Drive Belt
Weight	29 lbs (13.15 kg)
Dimensions	W39.3" x D13" x H8" (W99.82cm x D33.02cm x H20.32 cm)
Throughput	60 IP plates per hour (4.5 x 10)
Feed Mechanism	Removable and Extendable Feeding Trays
Material Size	Up To 5" x 96" Scan Area, Compatible with Multiple Plate Manufacturers
Power source	100-240V AC/ 2.5A max; 47-63Hz (Universal power supply)
Interface	USB 2.0
Heat generation	Standby 230W, maximum 1610W
Operating conditions	Temperature: 0-40°C/32-105°F, temperature change: 0.5°C/min, humidity: 15%-95% RH, magnetic fields: max 1260 µT (in conformance with EN 61000-4-8: level 3), 10 A/m
Light / Sensor	Diode / PMT
Erase Method	Automatic, LED
Network	DICONDE Compliant
Operating System	Windows 7, 8, 10 - 64-Bit

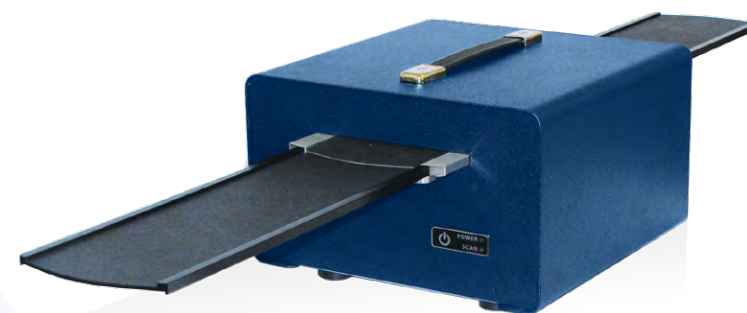
\* Specifications are subject to change without notice. Processing and display time dependent on processor speed, RAM disk access time, and video card.



Components are made from 98% recyclable parts • Signal is an ISO 13485 certified company • U.S. and international patents granted • Additional patents pending

© 2017 Signal, inc. All rights reserved. "SignalX Cobalt" is a registered trademark of Signal, inc. BR022217AUS

**SIGNAL**  
INDUSTRIAL IMAGING SYSTEMS



### DIMENSIONS

