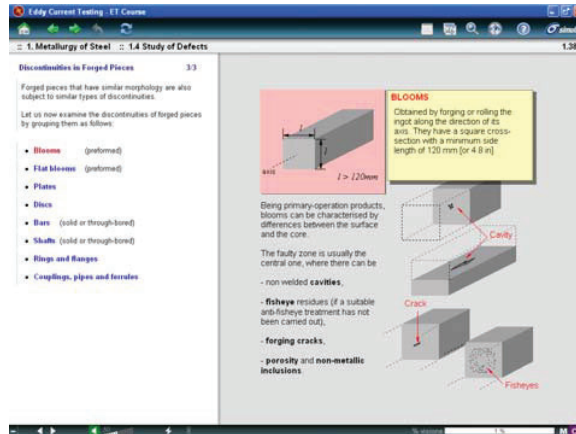


ET - EDDY CURRENT TESTING

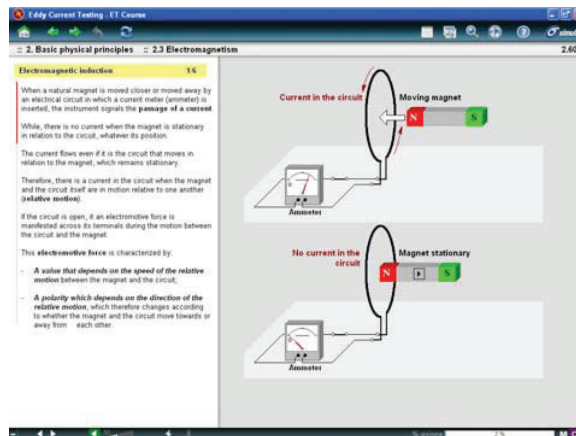
1. METALLURGY OF STEEL

- 1.1 Steel
- 1.2 Heat Treatments
- 1.3 Production of Carbon Steels
- 1.4 Study of Defects
- Self-evaluation Test



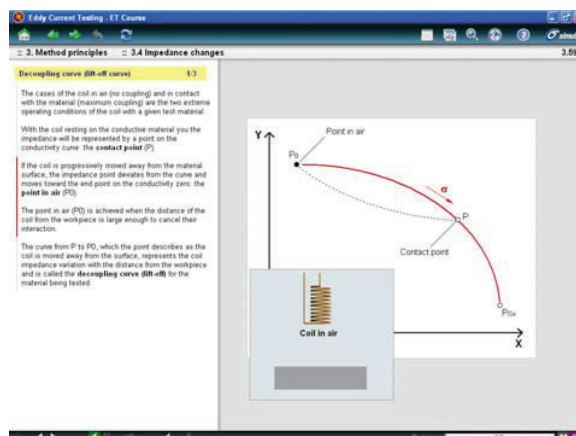
2. BASIC PHYSICAL PRINCIPLES

- 2.1 Electricity
- 2.2 Magnetism
- 2.3 Electromagnetism
- 2.4 Measurement units
- Self-evaluation Test



3. METHOD PRINCIPLES

- 3.1 Eddy current method
- 3.2 Eddy current properties
- 3.3 Factors affecting the eddy current
- 3.4 Impedance changes
- 3.5 Impedance diagrams
- Self-evaluation Test



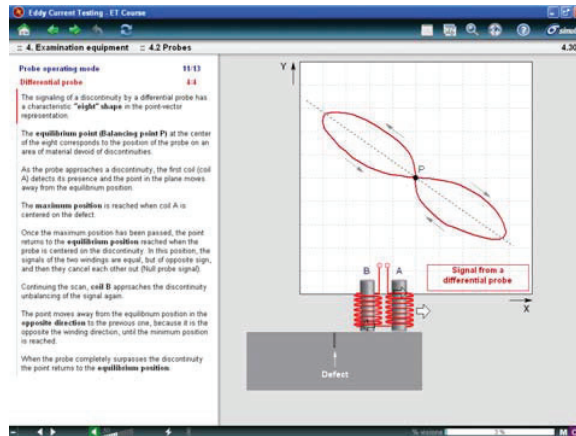
NDT Supply.com, Inc.
7952 Nieman Road
Lenexa, KS 66214-1560 USA

Phone: 913-685-0675, Fax: 913-685-1125
e-mail: sales@ndtsupply.com, www.ndtsupply.com



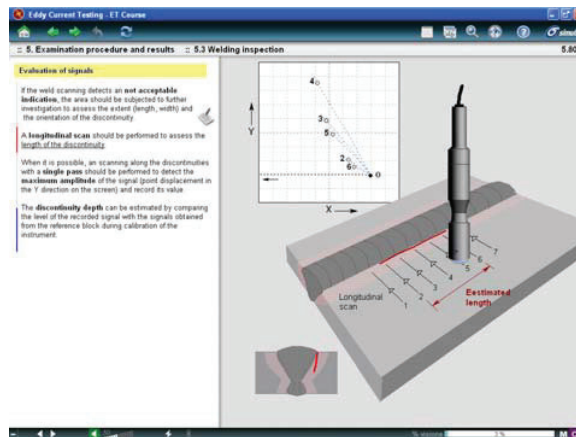
4. EXAMINATION EQUIPMENT

- 4.1 Examination system
- 4.2 Probes
- 4.3 Instruments
- 4.4 Reference standards
- Self-evaluation Test



5. EXAMINATION PROCEDURE AND RESULTS

- 5.1 General examination
- 5.2 Surface inspections
- 5.3 Welding inspection
- 5.4 Tube inspections with an internal probe
- 5.5 Tube and bar inspections with an external probe
- 5.6 Measuring thickness
- 5.7 Measuring conductivity
- Self-evaluation Test



FINAL TEST

NDT Supply.com, Inc.
7952 Nieman Road
Lenexa, KS 66214-1560 USA

Phone: 913-685-0675, Fax: 913-685-1125
e-mail: sales@ndtsupply.com, www.ndtsupply.com



EDDY CURRENT TESTING: DETAILED CONTENTS

1. METALLURGY OF STEEL ([>> ET](#))

1.1 Steel

- Introduction
- Components
- Solidification
- Iron-Carbon Diagram

1.3 Production of Carbon Steels

- Manufacturing Process
- Classification of Products
 - Forged Pieces
 - Castings
 - Rolled Plates
 - Pipes
 - Welded Joints

1.2 Heat Treatments

- Introduction
- Annealing
- Normalization

1.4 Study of Defects

- Discontinuities in Steel
- Discontinuities in Forged Pieces
- Discontinuities in Castings
- Discontinuities in Rolled Plates
- Discontinuities in Pipes
- Discontinuities in Welded Joints

1.5 Self-evaluation Test

- Steel
- Heat Treatments
- Production of Carbon Steels
- Study of Defects

2. BASIC PHYSICAL PRINCIPLES ([>> ET](#))

2.1 Electricity

1. Electric charge
2. Electric field
 - Work of the electric field
 - Electric potential energy
 - Electric potential
 - Potential difference
3. Electric current
 - Intensity and direction of the current
 - Electric current density
4. Electromotive force
5. Electrical resistance
 - Resistivity and conductivity
 - Resistivity and temperature
6. Direct current
 - Ohm's Law
7. Alternating current
 - Alternating current parameters
 - Skin effect
 - Vector representation
8. Electric power
9. Thermal effect of the current (Joule effect)

2.2 Magnetism

1. Magnets
2. Magnetic Field
3. Ferromagnetism
4. Magnetic Induction
 - Magnetic permeability
 - Normal magnetization curve
5. Magnetic Hysteresis Loop
6. Magnetic Flux
 - Conservation of magnetic flux

2.3 Electromagnetism

1. Magnetic field produced by current
 - Rectilinear Conductor
 - Circular loop
 - Coil
 - Solenoid
 - Toroidal coil
2. Magnetic circuits
 - Hopkinson's law
 - Analogies with electrical circuits
3. Electromagnetic induction
 - Faraday's law of induction
 - Eddy Current or Induced current
 - Lenz's law
 - AC voltage generator (Alternator)
4. Self-induction
 - Self-induced electromotive force
 - Coefficient of self-induction (or inductance)
 - Inductive circuit
5. Mutual induction
 - Coefficient of mutual inductance
 - Coupling coefficient
6. Alternating current circuits
 - Purely resistive circuit (Ohmic circuit)
 - Purely inductive circuit(L circuit)
 - Resistor - Inductor circuit (RL circuit)

2.4 Measurement units

1. Electromagnetic quantities
2. Base Units
3. Derived units

3. METHOD PRINCIPLES [\(>> ET\)](#)

3.1 Eddy current method

1. General description
2. Typical applications
3. Advantages
4. Limitations

3.2 Eddy current properties

1. Introduction
 2. Eddy currents paths
 - Surface coil (surface probe)
 - Encircling coil
 - Inside diameter coil
 3. Penetration depth
 - Standard penetration depth
 - Calculation of standard depth
 - Eddy currents densities
 - Frequency dependence
 - Penetration curves
 - Effective penetration depth
 4. Phase shift with depth
 - Calculating phase angle
 5. Calculation expressions
-

3.3 Factors affecting the eddy current

1. Introduction
2. Material properties
 - Conductivity of the material
 - IACS system
 - Magnetic permeability
3. Part geometry
 - Thickness of the workpiece
 - Surface shape
4. Presence of discontinuities
 - Shape and orientation of discontinuities
 - Depth of discontinuity
5. Eddy current coupling
 - Lift-off
 - Fill factor
6. Supply frequency of the coil
7. Edge effect

3.5 Impedance diagrams

1. Normalized impedance
2. Normalized frequency
3. Diagram: coil on surface
 - Influence of normalized parameters
4. Diagram: external coil with bar
 - Influence of normalized parameters
5. Diagram: external coil with tube
 - Influence of normalized parameters

3.4 Impedance changes

1. Introduction
2. Coil impedance
3. Impedance plane
4. Conductivity curve
5. Decoupling curve (lift-off curve)
6. Frequency effects
7. Material thickness effect
8. Non-conductive coating
9. Conductive coating
10. Discontinuity signals
11. Effect of magnetic permeability

4. EXAMINATION EQUIPMENT ([>>> ET](#))

4.1 Examination system

1. Parts of the system
2. Eddy current probe
3. Eddy current instrument

4.2 Probes

1. Probe classification
2. Coils configuration
 - Encircling probe
 - Internal probe
 - Surface probe
 - Probes with ferrite core
 - Shielded probes
3. Probe operating mode
 - Single coil probe
 - Reflection probe
 - Absolute probe
 - Differential probe
 - Transmission probe
 - Induction bridge
4. Structure of the coil
 - Calculation inductance

NDT Supply.com, Inc.

7952 Nieman Road
Lenexa, KS 66214-1560 USA

Phone: 913-685-0675, Fax: 913-685-1125

e-mail: sales@ndtsupply.com, www.ndtsupply.com



4.3 Instruments

1. Instruments of exam
2. Oscillator
3. Measuring circuit
 - Bridge measuring circuit
 - Maxwell-Wien bridge
 - Measuring with absolute probes
 - Measuring with compensated probes
 - Measuring with differential probes
 - Measuring with reflection probes
4. Phase analysis
5. Phase rotation
6. Band-pass filters
 - Frequency response
 - Types of filters
 - Effect of the filters on the signal
7. Display device
 - Digital displays
 - Settings
8. Eddy current instruments
 - Meters instruments
 - Portable instruments
 - Multi-frequency instrument

4.4 Reference standards

1. Generality
2. Conductivity samples
3. Calibration reference standards
 - Samples with natural discontinuities
 - Samples with artificial discontinuities
4. Lift-off samples

5. EXAMINATION PROCEDURE AND RESULTS [\(>> ET\)](#)

5.1 General examination

1. Introduction
2. Sensitivity to defects
 - Lift-off
 - Penetration depth
 - Coil parameters
3. Signal phase discrimination
4. Frequency selection
5. Defect effects on the signal
 - Defect orientation
 - Minimum defect length
 - Defect depth
6. Effectiveness of test
 - Lift-off variations
 - Surface conditions
 - Surface coating
 - Test piece temperature
 - Test piece geometry
 - Probe orientation
 - Probe wobble
 - Scanning speed

5.2 Surface inspections

1. Introduction
 2. Examination system
 - Instrument
 - Probes
 - Calibration block
 3. Equipment calibration
 - Check sensitivity
 - Calibration procedure
 - Phase adjustment
 - Gain settings
 4. Inspection technique
 5. Evaluation of signals
 6. Sub-surface discontinuities
-

7. Equipment
8. Reference blocks
9. Testing of ferromagnetic materials

5.3 Welding inspection

1. Introduction
2. Examination system
 - Instrument
 - Probes
 - Calibration block
3. Equipment calibration
 - Check sensitivity
 - Phase adjustment
 - Gain settings
 - Coating thickness measurement
 - Coating thickness compensation
4. Inspection technique
 - a) Inspection of the HAZ and parent metal
 - b) Inspection of the welded surface
5. Evaluation of signals
6. Other examination techniques

5.5 Tube and bar inspections with an external probe

1. Inspection technique
 - Inspection with encircling coil
 - Inspection with surface probe & rotating workpiece
 - Inspection with surface probe for sectors
2. Calibration reference standards
 - Example of block reference
3. Equipment calibration
4. Inspection method
5. Evaluation of signals

5.7 Measuring conductivity

1. Conductivity measuring
 - Factors affecting the measures
2. Instruments
3. Conductivity meters
 - Instrument calibration
 - Measurement execution
4. Measurement by general purpose meters
 - Instrument calibration
 - Choice of operating frequency

5.4 Tube inspections with an internal probe

1. Introduction
 - Tube bundle heat exchangers
2. Examination system
 - Instrument
 - Internal probes
 - Calibration reference standards
3. Equipment calibration
 - Differential bobbin coil
 - Absolute bobbin coil
4. Inspection technique
5. Evaluation of signals
 - Estimate depth of discontinuities
6. Ferromagnetic tubes

5.6 Measuring thickness

1. Measurable thicknesses
 2. Thickness of non-conductive coatings
 - Factors affecting the measurement
 - Instruments
 - Calibration reference standards
 - Instrument calibration
 - Thickness measurement
 3. Thickness of conductive coatings
 - Factors influencing the measurement
 - Instrument and calibration reference blocks
 - Instrument calibration
 - Thickness measurement
 4. Thickness of thin metal sheet
 - Thickness curves
 - Construction of thickness curves
-