

MEETS STANDARDS FOR



EN ISO:3059

SPECTROLINE®

# EDGE™ 13 SERIES

LED UV-A Penetrant Station Flood Lamp

EDG-13H

Designed specifically for NDT professionals who require a rugged, high-intensity lamp to spot fluorescent indications on large parts. Perfect for use in automotive, fabrication, machining, oil/gas, and more industries!

**IP65  
RATED**



**Dust Tight &  
Water Resistant**



**NDT Inspection  
Booths**



**Screening of  
Fluorescent Particles**

**FANLESS**

Cool running design that uses state-of-the-art heat sinks

**EASILY MOUNTABLE**

For overhead inspection or in-line applications

**FLEXIBLE ARM**

For mounting at specific angles

**GANGABLE**

Can be ganged together to provide an even wider coverage area

**LONG-LASTING  
UV-A LENSES**

Virtually eliminate clouding/solarization

**13 UV-A LEDs**

Provides large area of coverage for the largest, most even overhead beam available



**CERTIFICATE OF  
LIGHT OUTPUT**  
included with lamp



# EDGE™ 13 EDG-13H

MODEL	NOMINAL STEADY-STATE UV-A (365 nm) INTENSITY at 15 in (38 cm) ①	VISIBLE LIGHT MEASUREMENT	UV-A COVERAGE AREA (at minimum 1,200 µW/cm²)
EDG-13H	15,000 µW/cm²	< 2 foot-candle (22 lux)	18 x 16 in (46 x 41 cm)

**Light Source:** 13 UV-A (365 nm) LEDs

**Lamp Style:** Panel flood lamp

**Length: (L x W x H)** 11 x 14 x 9 in (28 x 36 x 23 cm)

**Weight:** 14 lb (6.4 kg)

**Power Requirements:** AC power (main AC power cord supplied with the unit) (Available in 100-120V, 230V and 240V versions)



CERTIFICATE OF LIGHT OUTPUT

① UV-A intensity reading taken with the Spectroline® AccuMAX™ Series meter, and are factory set to the values shown.

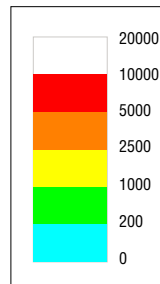
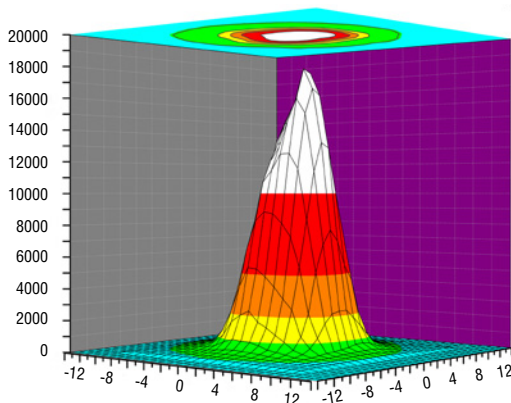
For applications requiring extremely large coverage area, the EDGE™ 13 can be quickly ganged together.



\*Optional accessory: ganged cables with connectors (130156)

## UV-A Beam Profiles

Surface Contour Profile at 15 in (38 cm)



Top Intensity Profile at 15 in (38 cm)

