

# OPTIMAX 365

## SPECTROLINE<sup>®</sup> OPTIMAX<sup>™</sup> 365

**Our Most Powerful  
and Versatile UV-A  
LED Flashlight!**

### **APPLICATIONS:**

- **Nondestructive Testing (NDT)**
- **Quality Control**
- **Fluorescent Leak Detection**
- **Industrial Inspection**
- **UV-A Curing**
- **Photoactivation and UV-A Dosing**
- **Rare Document/Stamp/Artwork Examination**
- **And many more!**

**Powerful** — Ultra-high intensity up to 50,000 $\mu$ W/cm<sup>2</sup> of true UV-A (365 nm).

**Instant-on Operation** — Push the button and the lamp immediately reaches full power and is ready for use. Eliminates down time waiting for bulbs to warm up.

**Portable & Rugged** — Cordless. Use it anywhere! Stands up to heavy use in the field, shop or laboratory. Anodized aluminum lamp body minimizes corrosion.

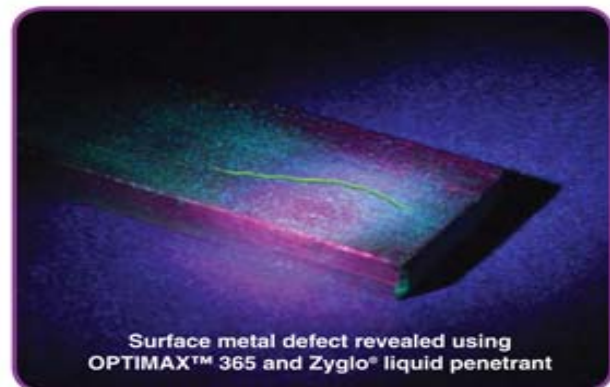
**Rechargeable** — Powered by a rechargeable NiMH battery. Provides 90 minutes of continuous inspection between charges (AC and DC chargers included).

**Long Life** — 30,000-hour LED bulb. Electronic Intensity Stabilizer ensures consistent performance. Beam strength will not fade between charges!

**Versatile** — Meets MIL and ASTM specs for FPI and MPI.



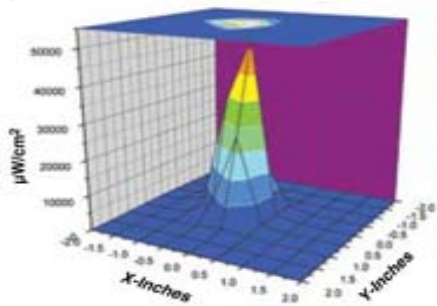
The **OPTIMAX<sup>™</sup> 365** comes complete with smart AC and DC chargers, UV-absorbing spectacles, belt holster and padded carrying case. AC charger available in 120V, 230V, 240V or 100V versions.



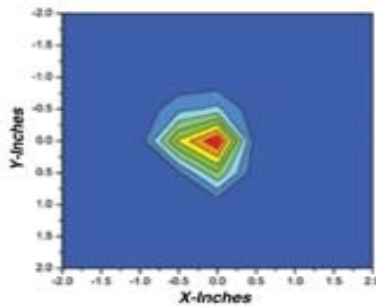
Surface metal defect revealed using  
OPTIMAX<sup>™</sup> 365 and Zygro<sup>®</sup> liquid penetrant

# OPTIMAX™ 365 *High-Intensity, Versatile, True UV-A LED Flashlight*

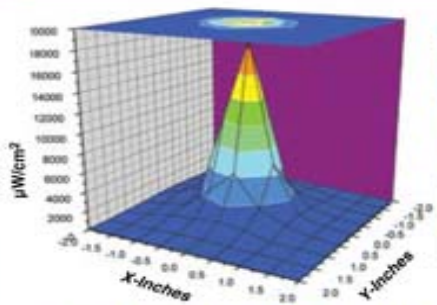
The cordless **OPTIMAX™ 365** is ergonomic, compact and lightweight. It's designed to provide ultimate freedom of movement during inspections. With an ultra-high intensity up to 50,000 $\mu\text{W}/\text{cm}^2$ , it's our most powerful true UV-A (365 nm) LED flashlight.



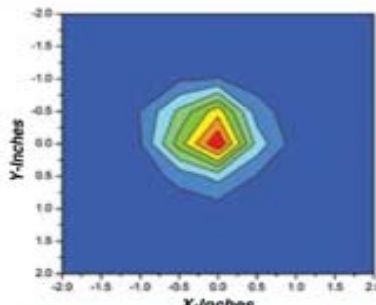
SURFACE CONTOUR PROFILE AT 6 IN (15 CM)



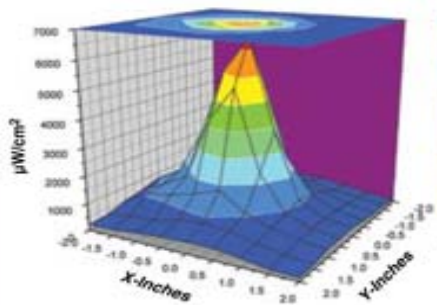
TOP INTENSITY PROFILE AT 6 IN (15 CM)



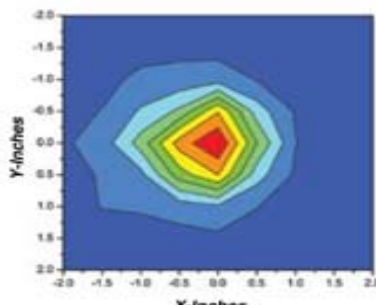
SURFACE CONTOUR PROFILE AT 15 IN (38 CM)



TOP INTENSITY PROFILE AT 15 IN (38 CM)



SURFACE CONTOUR PROFILE AT 24 IN (61 CM)



TOP INTENSITY PROFILE AT 24 IN (61 CM)

### KEY FEATURES

- Electronic Intensity Stabilizer
- Very low visible light emission: under 2 foot-candles (20 Lux)
- 30,000-hour LED bulb life
- Battery strength indicator light
- Charge status indicator light
- Corrosion-resistant, anodized aluminum lamp body
- Rechargeable NiMH battery

### SPECIFICATIONS

**Product Number**  
 OPX-365\*

**Lamp Style**  
 Cordless LED Flashlight

**Lamp Head Diameter**  
 2 in (5.1 cm)

**Length**  
 8 in (20.3 cm)

**Weight (with battery)**  
 11.8 oz (335 g)

**Power Requirement**  
 3.6V, 2AH NiMH internal battery stick (rechargeable)

**Run Time**  
 90 minutes (continuous)

**Charge Time**  
 4 hours

**Nominal Steady-State UV-A Intensity:**

6" (15 cm)—50,000  $\mu\text{W}/\text{cm}^2$

15" (38 cm)—18,000  $\mu\text{W}/\text{cm}^2$

24" (61 cm)—6,000  $\mu\text{W}/\text{cm}^2$

\* Model **OPX-365C** also available for curing applications.

**Nominal Steady-State UV-A Intensity:**

6" (15 cm)—60,000  $\mu\text{W}/\text{cm}^2$

**NOTE:** All readings taken with a Spectroline® AccuMAX™ Series meter.

**SPECTRONICS CORPORATION**  
 956 Brush Hollow Road, P.O. Box 483  
 Westbury, New York 11590  
 800-274-8888 • 516-333-4840  
 Fax: 800-491-8888 • 516-333-4859  
[www.spectroline.com](http://www.spectroline.com)

DISTRIBUTED BY:

4/08 A06023  
 PRINTED IN U.S.A.