

# TS-3000

## IMMERSION Scanner

60" X 36" X 36"  
(LXWxD)

### LARGE INDUSTRIAL IMMERSION SCANNER

**TECSCAN'S** *Immersion Scanners are versatile computer-controlled ultrasonic systems used for Non-destructive Testing of materials. They range from small tabletop scanners all the way to large multi-axes scanners.*

**OUR IMMERSIONS SCANNERS** are designed to be rugged, highly accurate and repeatable. A typical configuration consists of two motorized axes: X, Y and one manual Z. Additional axes such as automated Z axis and manual Gimbal/Gimbal assemblie can be incorporated to the scanners.

#### HIGHLIGHTS

- Modular design for future upgrade
- Heavy-duty stainless steel tank
- Welded Steel structure
- TecView™ UT data acquisition/analysis
- UTPR-50 Pulser receiver
- 12 bit 125 MHZ A/D card
- Motorized XYZ axes (up to 12 axes)
- Motorized Gimbal/Gimbal (optional)
- Through Transmission Yoke (optional)
- Contour following (optional)
- Remote access assistance

#### Typical Scanner Specification



Axis	Max Speed	Accuracy	Resolution (Per Step)	Repeatability
X	12"/s	+/- 0.01"/ft	0.00003"	0.003"
Y	12"/s	+/- 0.01"/ft	0.00006"	0.003"
Z	8"/s	+/- 0.01"/ft	0.00002"	0.003"

Axis	Max Speed	Accuracy (per Feet)	Resolution (Per Step)	Repeatability
Gimbal (A)	35°/s	+/- 0.25°	0.0004°	+/- 0.05°
Gimbal (b)	35°/s	+/- 0.25°	0.0004°	+/- 0.05°
Turn Table (TT)	35 RPM	+/- 0.2°	0.0007°	0.2°



T (1) 450-641-5876  
F (1) 450-641-5873  
E [info@tecscan.ca](mailto:info@tecscan.ca)  
75 De Mortagne Blvd., Suite 122,  
Boucherville, Quebec, Canada J4B 6Y4



7952 Nieman Road, Lenexa, KS 66214-1560 USA  
Phone: 913-685-0675, Fax: 913-685-1125  
[www.ndtsupply.com](http://www.ndtsupply.com), [sales@ndtsupply.com](mailto:sales@ndtsupply.com)

# Scanner Options

**TecScan™** offers a multitude of optional equipment that can be used along with the immersion scanners to enhance their efficiency and improve the overall NDT process.



**Automated Turntable**

- Stainless steel low-profile construction
- Available in many diameter size or capacity
- Motorized with 500 lbs up to 1000 lbs centered load
- Optional high precision self centering three-Jaw Chuck



**Automated Gimbal/Gimbal**

- Motorized Gimbal/Gimbal
- Encapsulated rugged motors
- Accurate Ultrasonic beam adjustment



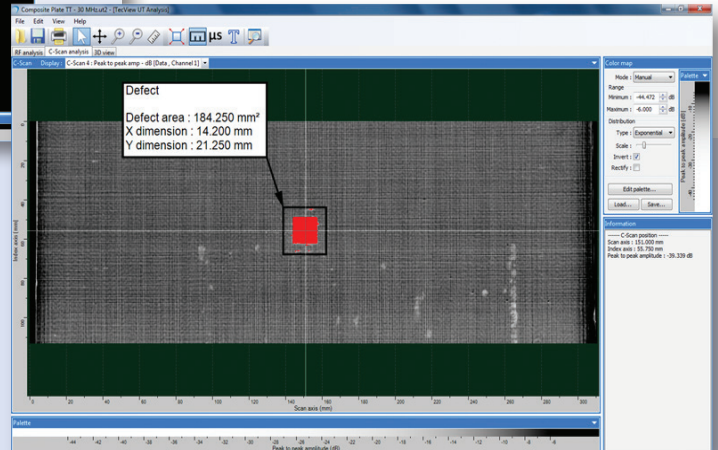
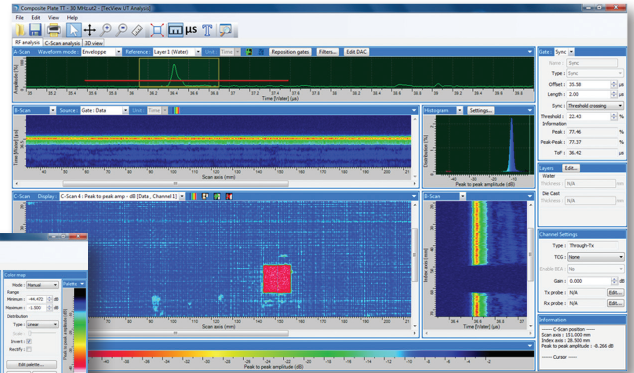
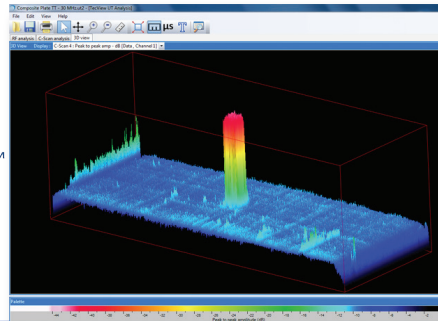
**Manual Gimbal/Gimbal**

- Designed for laboratory environments
- Small and compact dual rotational axis assembly
- Adjustment knobs for accurate probe positioning
- Available with or without dial indicators

## TECVIEW™ UT

Windows® based software specifically designed for Ultrasonic inspections and C-Scan imaging. This user friendly software helps manage the entire NDT procedure, from scanner motion control to data acquisition and analysis.

**TECVIEW™ UT**



## Combining the best of Windows®

TecView™ UT makes the NDT process simple and rapid. The software assists the user with the setup of inspection parameters by incorporating different modules including Data Acquisition and Management, Robotic control, Imaging as well as Data Analysis and Interpretation.



7952 Nieman Road, Lenexa, KS 66214-1560 USA  
Phone: 913-685-0675, Fax: 913-685-1125  
[www.ndtsupply.com](http://www.ndtsupply.com), [sales@ndtsupply.com](mailto:sales@ndtsupply.com)

**T (1) 450-641-5876**  
**F (1) 450-641-5873**  
**E [info@tecscan.ca](mailto:info@tecscan.ca)**  
75 De Mortagne Blvd., Suite 122,  
Boucherville, Quebec, Canada J4B 6Y4

