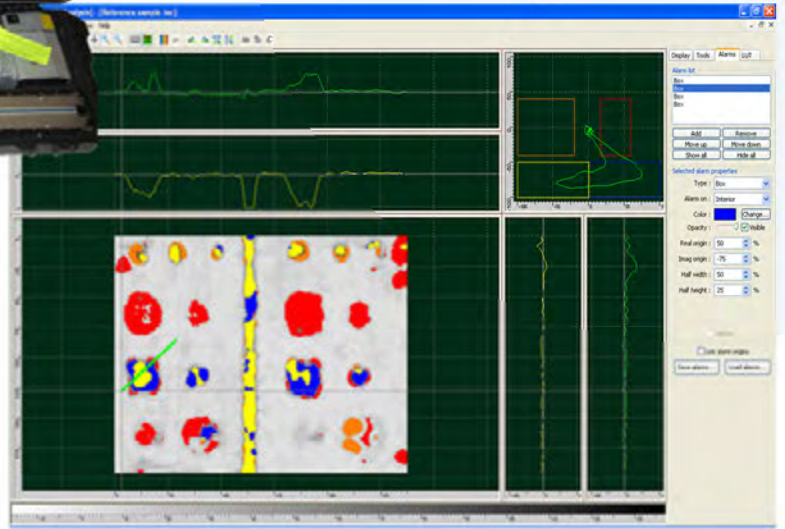


TECSCAN SCANNER

TecScan's TecFlex Scanner consists of an X, Y manual scanner that can be used for Ultrasonic, Bond Testing, Eddy Current and TOFD inspections. With encoder feedback on both axes, and an indexing mechanism on the Y axis, TecFlex enables accurate scanning capabilities. Its articulated probe support helps maintain contact between the probe and the part under inspection. Due to its flexible rail, this manual scanner has the ability to scan contoured and edge surfaces. A suction cups support system helps secure the scanner to the inspected part, a feature that is crucial when inspections are done vertically or on contoured surfaces.

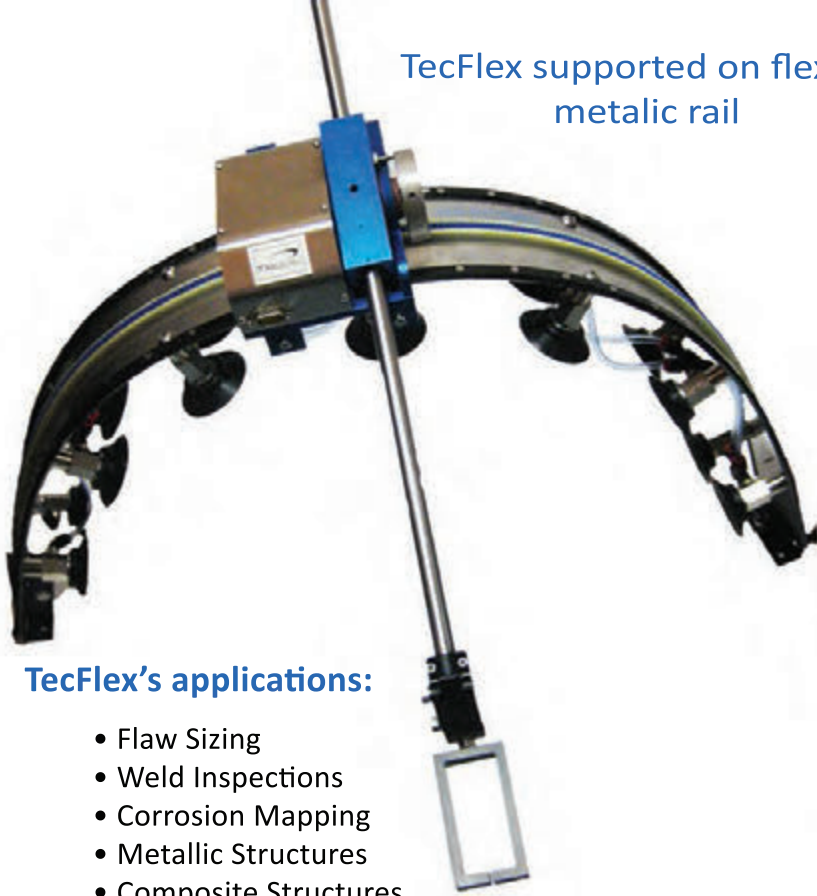
www.tecscan.ca



Scanner specifications

Axis	Accuracy	
X Axis Stroke	40"	1000 mm
Y Axis Stroke	15"	375 mm
Scanning Resolutions (X & Y)	0.0006"/Step	0.015 mm/Step
Indexing Step (Y Axis)	0.02"/Index	0.5mm/Index

TecFlex supported on flexible
metallic rail



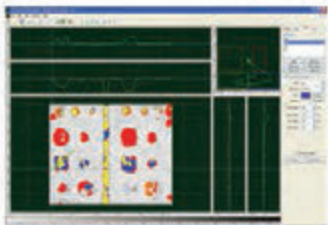
TecFlex's applications:

- Flaw Sizing
- Weld Inspections
- Corrosion Mapping
- Metallic Structures
- Composite Structures
- Rapid inspection of large or inaccessible areas

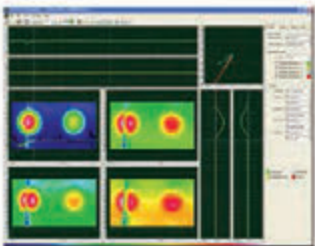
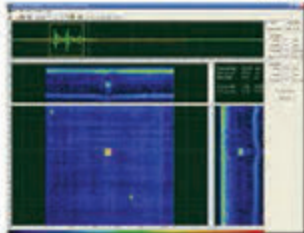
TecView™ Software packages

TecView™ consists of a suite of software packages that comprises Ultrasonic, Eddy Current, Pulsed Eddy Current and Time-Of-Flight-Diffraction technologies. Combining the best of Windows operating systems and graphical user interface, TecView™ makes the NDT process simple and rapid. The software aids the user to setup the inspection parameters and it incorporates different modules including Data Acquisition and Management, Robotic control, Imaging as well as Data Analysis and Interpretation.

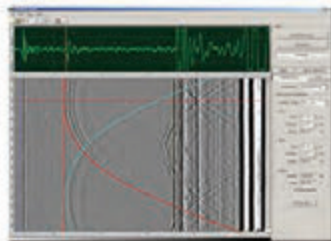
TECVIEW™
BT



TECVIEW™
UT



TECVIEW™
EC

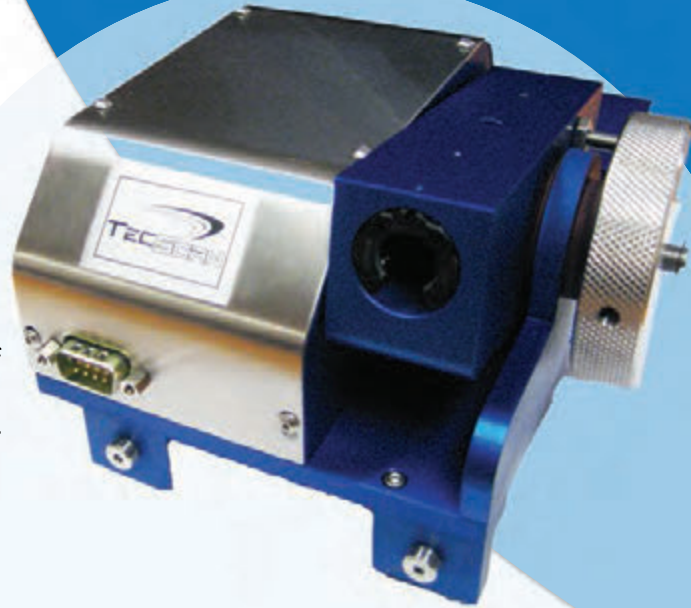


TECVIEW™
TOFD

TECFLEX SCANNER

When combined with one of our TecView™ software packages and an industrial Lunchbox computer, the TecFlex system becomes a fully **Integrated Solution** designed for the inspection of Aircraft skin, Metallic and Composite structures as well as for a whole range of other applications.

The scanner can be easily disassembled and stored in the provided transportation box for site inspections.



Modular scanner head configuration

System Features

- Encoded Data Acquisition Scanner
- Compatible with multiple NDT technologies: UT, BT, EC and TOFD
- A complete integrated solution: Manual Scanner, a TecView™ acquisition and analysis software package, a portable workstation, and a Travel case.