

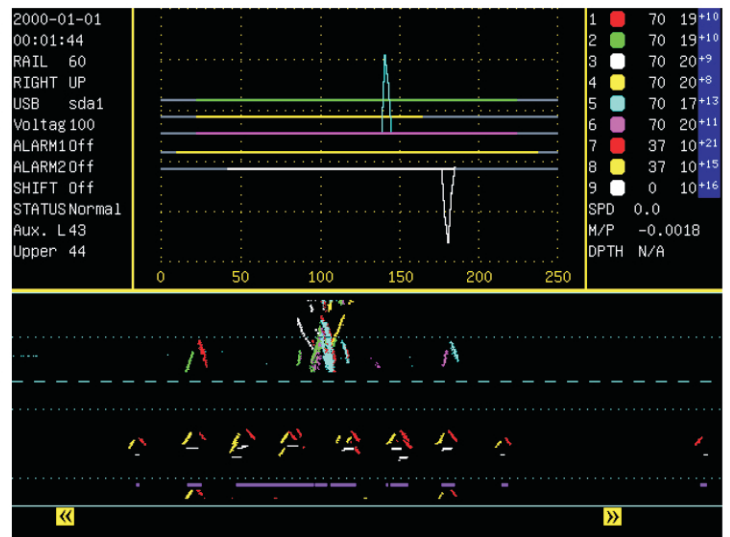
RT10-C Ultrasonic Rail Flaw Detector

Main Features

RT10-C is our upgraded version of RT10-B ultrasonic rail flaw detector. The most distinguished feature is RT10-C instrument offers simultaneous A-scan and B-scan. Besides RT10-C uses high brightness 8.4 inch screen while RT10-B uses 5.8 inch screen. The bigger screen offers much better waveform viewer.

The instrument also offers gauge side corner defect detection by using skewed 70 degree transducer. The skewed 70 degree transducer shoots ultrasound to the fillet of the rail and reflects up to find gauge side corner defect.

The push cart also features a motorized cart tilting adjustment to keep good base reflection and thus better flaw detection.



RT10-C Ultrasonic Rail Flaw Detector
Main Display



7952 Nieman Road, Lenexa, KS 66214-1560 USA
Phone: 913-685-0675, Fax: 913-685-1125
www.ndtsupply.com, sales@ndtsupply.com

RT10-C Ultrasonic Rail Flaw Detector

Specification

Flaw Detector Specification

Main Processor: 500MHz

Channels: 10 channels, in which nine channels are used for scanning of the rail; one channel is used for hand verification of defect in hand test mode.

Test mode: A-scan and B-scan.

Frequency Range: 2~4MHz. Repetition Rate: 400Hz, selectable to 500Hz.

Pulser: 520V negative spike.

Detection Range: Applicable to 90~145lb Rail.

Testing Speed: up to 5 km/hour.

Gain Range: 0~80dB in 1dB step.

Alarm: Threshold level adjustable, slope line detection.

Data file recording range: 200 miles, selectable up to 400 miles.

Battery: Lithium 11.2V, 10.0 ampere hour up to 8 hours. Recharge time 4 hours.

Charger: 100~240VAC, 50~60Hz.

Display: Amorphous silicon TFT LCD panel with LED, 8.4 inch diagonal, 800x600 resolution, high brightness.

Temperature Range: Operating -30°C ~ 80°C, Storage -40°C ~ 85°C.

Weight(including battery): 4kg (9lb).

Walking Stick Specification

Material: ABS and POM, very light, but electrical resistant and water resistant.

Water tank: 18liter.

Temperature Range: Operating -30°C ~ 80°C, Storage -40°C ~ 85°C.

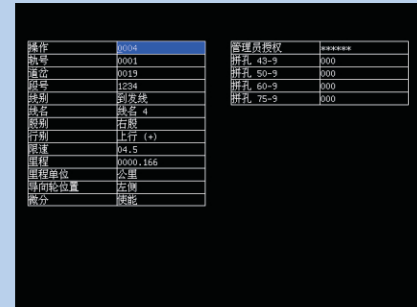
Size: 430x850x920mm (16.9x33.4x36.2 inch).

Weight: 20kg (44lb) with ground walking part, 16kg(36lb) without ground walking part.

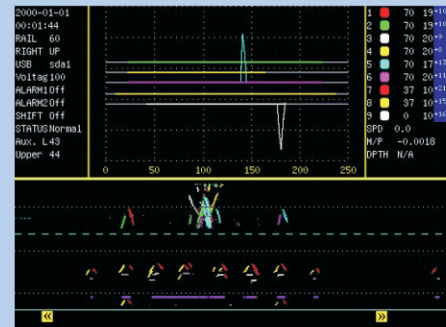
Field Photos



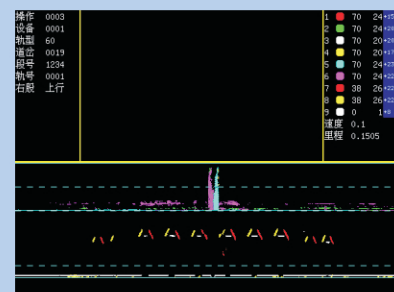
Linux User Interface and Dialog for Easy Operation



RT10-C Management User Interface.



simultaneous A- and B- scan.



Replay the Test Data on Instrument.



Replay the Test Data On PC.