

## LEAK TESTING PRODUCT RANGE

# FLYING VISION

### VACUUM BOX



The series of BAV vacuum boxes with interchangeable bases has been specifically designed to inspect angled assemblies, whether open or closed, depending on the selected options.

Their versatility allows them to be used across various sectors, particularly in the maritime industry for inspecting ship hulls, tanks, and repair inserts.

The BAV series vacuum boxes are composed of two parts:

- The inspection window
- The sealing base

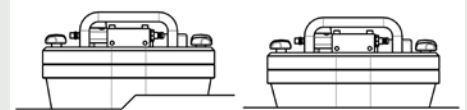
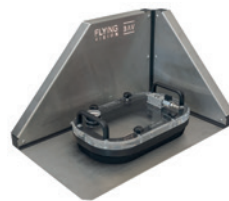
This innovative design allows you to keep the inspection window while changing the base according to the control configuration, thereby enhancing the tool's flexibility and efficiency.



## CONTROL CONFIGURATIONS

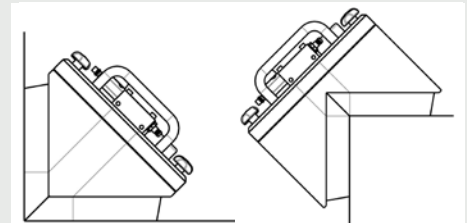
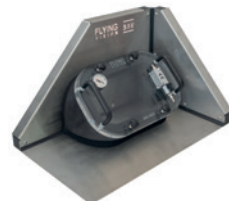
### Flat controls:

- Flat welds
- Lap joints
- Internal or external circular welds depending on the curvature radius



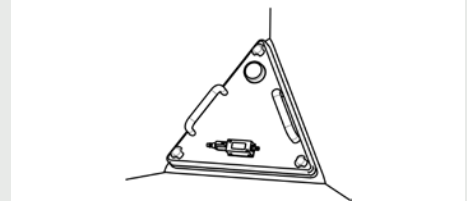
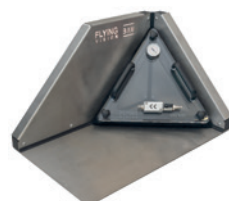
### Angle controls:

- Internal angle welds
- External angle welds
- Internal or external angle welds with a varying angle



### Corner controls:

- Internal corner welds at 90°
- Internal corner welds where an isosceles plane is present



## MAIN FEATURES

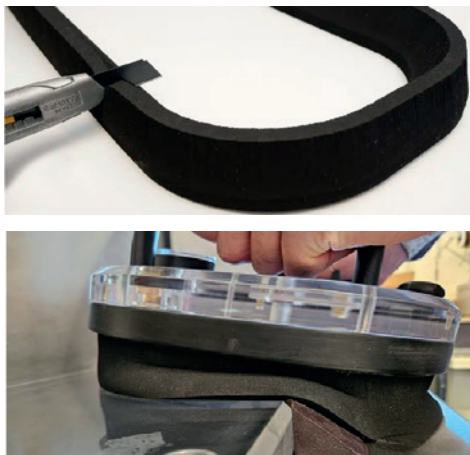
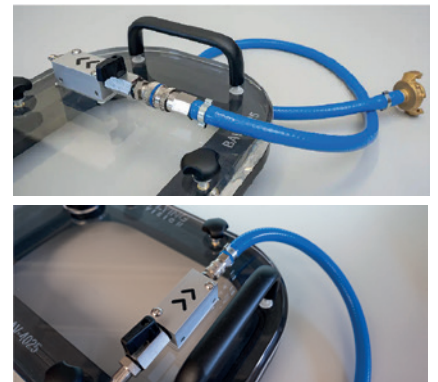


### Design in two parts

- Independent inspection window including all elements necessary for inspection processing (vacuum gauge, hybrid vacuum system, and handling grips)
- Height of the inspection chamber at least 2cm to facilitate indication interpretation
- Interchangeable base for:
  - Quick maintenance
  - Modularity / configuration change

### Hybrid vacuum system

- Venturi effect vacuum
- Vacuum pump suction
- Airflow regulation valve on the Venturi side
- Aluminum and stainless steel design for enhanced durability
- Integrated into the window to ensure mechanical protection
- Quick coupling Rectus type 21 male (vacuum pump side)
- Quick coupling Rectus type 23 male (Venturi side)



### High-performance foam

- High resistance to abrasion
- Flexibility 40/50 shore 00
- Standard foam heights of 35 mm
- High deformation and clearance capacity (around 20mm for standard foam and around 30 mm for 50 mm foam)\*
- Innovative geometry to ease application and reduce effort
- High resistance adhesive bonding
- Resistant to hydrocarbons and most chemicals

*\*Performance achievable with the upcoming "Silicon spacers" accessory*

### Integrated pressure gauge

- Integrated into the window for mechanical protection
- Easily removable with one nut
- Measurement range from 0 to -1 Bar
- Calibration certificate available as an option



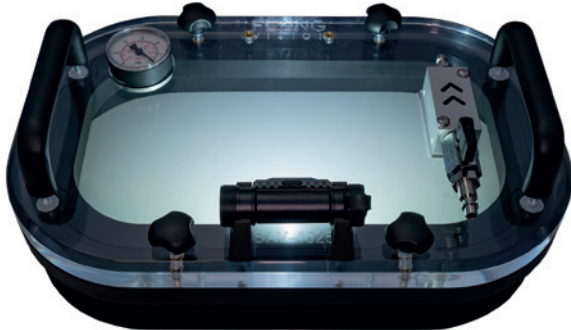
### Control valve

- Precise adjustment of the vacuum pressure using either the Venturi effect or a vacuum pump
- Release valve for eliminating the vacuum and immediately detaching the vacuum box

*\*Optional depending on the version of BAV*



## GENERAL OPTIONS



### LED Lighting - Ref: BAV-A050

- Removable LED lighting with battery
- USB-C charging port
- Diffuser to reduce reflections
- Light temperature 4500°K
- Adjustable from 500 to 15000 Lux
- 6 hours of battery life at 2500 Lux
- IP68 protection



### Reinforced Transport Cases

- Reinforced transport cases with a custom-made insert to fit the vacuum box, preventing movement.
- These cases can transport several bases depending on the version

#### Reference of reinforced cases according to BAV models:

BAV-A230 - BAV4025

BAV-A330-1 - BAV4025A 90°

BAV-A330-4 - BAV4025A 130°

BAV-A330-2 - BAV4025A 70°

BAV-A330-3 - BAV4025A 110°

BAV-A330-5 - BAV4025A 220°



### Pressure Gauge with Calibration Certificate - Ref: BAV-A030-2

We supply a standard CE certified but unverified pressure gauge. As an option, we offer a pressure gauge with a verification certificate for your standardized inspections.

## ACCESSORIES

Réf: PAV-B8-220      Field dry vane vacuum pump - 8m<sup>3</sup>/h - 220V 50/60Hz

Réf: BAV-A060      1 m extension - venturi air circuit - quick-release female connector rectus 23 / claw coupling

Réf: BAV-ACS-07      2 m extension - venturi air circuit - quick-release female connector rectus 23 / claw coupling

Réf: BAV-ACS-04      10 m extension - venturi air circuit - quick-release female connector rectus 23 / claw coupling

Réf: BAV-ACS-05      20 m extension - venturi air circuit - quick-release female connector rectus 23 / claw coupling

Réf: BAV-ACS-06      30 m extension - venturi air circuit - quick-release female connector rectus 23 / claw coupling

Réf: à venir      Magnetic silicon spacers set - for overlap and double-overlap clearance up to 35mm.


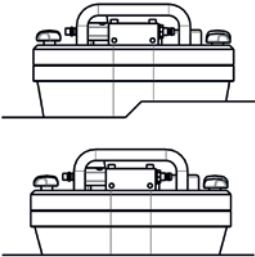
# ▶ LEAK TESTING PRODUCT RANGE

## ▶ VACUUM BOX


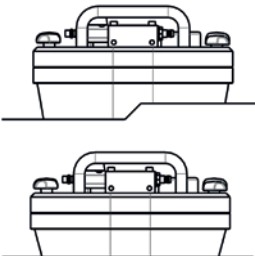

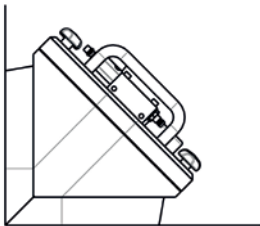

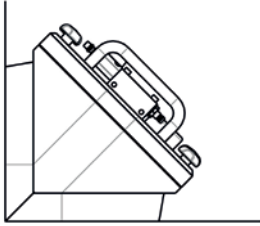

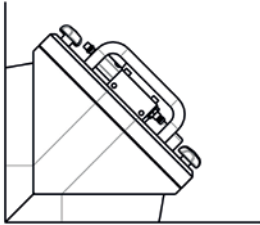
# FLYING VISION

## PRODUCTS

### BAV7025 Series Kits


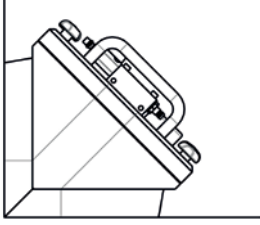

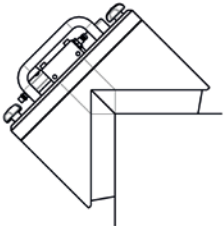

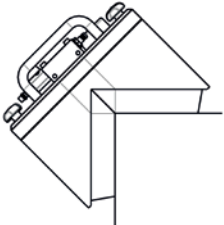
Reference / Designation	Control Configuration	Specifications
<b>Réf: BAV-A100-001</b> BAV7025 - Flat vacuum box kit 		<b>Dimensions</b> 700 x 250 x 130 mm <b>Weight</b> 7.2 kg <b>Foam Height</b> 35 mm <b>Foam Hardness</b> 40/50 Shore 00 <b>Max Controllable Height</b> 20 mm* <b>Min Control Radius</b> 8 m

### BAV4025x Series Kits

Reference / Designation	Control Configuration	Specifications
<b>Réf: BAV-A200-001</b> BAV4025 - Flat vacuum box kit 		<b>Dimensions</b> 400 x 250 x 130 mm <b>Weight</b> 4.5 kg <b>Foam Height</b> 35 mm <b>Foam Hardness</b> 40/50 Shore 00 <b>Max Controllable Height</b> 20 mm* <b>Min Control Radius</b> 2.5 m
<b>Réf: BAV-A300-2</b> BAV4025A - 70° angle vacuum box kit 		<b>Dimensions</b> 400 x 250 x 300 mm <b>Weight</b> 6.5 kg <b>Foam Height</b> 35 mm <b>Foam Hardness</b> 40/50 Shore 00 <b>Nominal Control Angle</b> 70° <b>Max Controllable Angle</b> ≈ 65° à 80°
<b>Réf: BAV-A300-1</b> BAV4025A - 90° angle vacuum box kit 		<b>Dimensions</b> 400 x 250 x 250 mm <b>Weight</b> 6.2 kg <b>Foam Height</b> 35 mm <b>Foam Hardness</b> 40/50 Shore 00 <b>Nominal Control Angle</b> 90° <b>Max Controllable Angle</b> ≈ 80° à 100°
<b>Réf: BAV-A300-3</b> BAV4025A - 110° angle vacuum box kit 		<b>Dimensions</b> 400 x 250 x 220 mm <b>Weight</b> 6 kg <b>Foam Height</b> 35 mm <b>Foam Hardness</b> 40/50 Shore 00 <b>Nominal Control Angle</b> 110° <b>Max Controllable Angle</b> ≈ 100° à 120°

## PRODUCTS

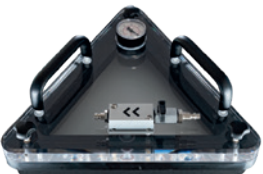
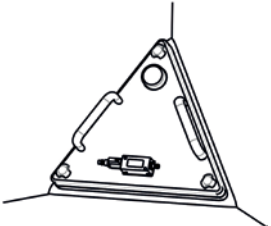
### BAV4025x Series Kits

Reference / Designation	Control Configuration	Specifications	
<b>Réf: BAV-A300-4</b> BAV4025A - 130° angle vacuum box kit 		<b>Dimensions</b> <b>Weight</b> <b>Foam Height</b> <b>Foam Hardness</b> <b>Nominal Control Angle</b> <b>Max Controllable Angle</b>	400 x 250 x 190 mm 5.8 kg 35 mm 40/50 Shore 00 130° ≈ 120° à 140°
<b>Réf: BAV-A300-5</b> BAV4025A - 220° angle vacuum box kit 		<b>Dimensions</b> <b>Weight</b> <b>Foam Height</b> <b>Foam Hardness</b> <b>Nominal Control Angle</b> <b>Max Controllable Angle</b>	400 x 250 x 190 mm 6.2 kg 35 mm 40/50 Shore 00 220° ≈ 210° à 230°
<b>Réf: BAV-A300-6</b> BAV4025A - 270° angle vacuum box kit 		<b>Dimensions</b> <b>Weight</b> <b>Foam Height</b> <b>Foam Hardness</b> <b>Nominal Control Angle</b> <b>Max Controllable Angle</b>	400 x 250 x 250 mm 6.2 kg 35 mm 40/50 Shore 00 270° ≈ 260° à 280°

### Optional Bases for the BAV4025x

Reference	Designation
Réf: BAV-A220-1	Complete base for BAV4025x - 180° Angle / flat base - Foam height 35mm
Réf: BAV-A220-2	Complete base for BAV4025x - 180° Angle / flat base - Foam height 50mm
Réf: BAV-A320-2	Complete base for BAV4025x - 70° Angle - Foam height 35mm
Réf: BAV-A320-1	Complete base for BAV4025x - 90° Angle - Foam height 35mm
Réf: BAV-A320-3	Complete base for BAV4025x - 110° Angle - Foam height 35mm
Réf: BAV-A320-4	Complete base for BAV4025x - 130° Angle - Foam height 35mm
Réf: BAV-A320-5	Complete base for BAV4025x - 220° Angle - Foam height 35mm
Réf: BAV-A320-6	Complete base for BAV4025x - 270° Angle - Foam height 35mm

### BAV40C Kits series

Reference / Designation	Control Configuration	Specifications	
<b>Réf: BAV-A400-001</b> BAV40C - int. corner vacuum box kit 		<b>Dimensions</b> <b>Weight</b> <b>Foam Height</b> <b>Foam Hardness</b> <b>Controllable Angle</b>	490 x 270 x 130 mm 4.5 kg 15 mm 40/50 Shore 00 Internal corner at 90° or corner where the 3 sides form an isosceles plane

# ▶ LEAK TESTING PRODUCT RANGE

## ▶ VACUUM PUMP PAV-B8-220

# FLYING VISION



We offer an ultra high-performance dry vacuum pump (8m<sup>3</sup>/h - 150 mbar vacuum) in 220V, perfectly suited for the most demanding field conditions, with optimal reliability and minimal maintenance.

Its dry vane vacuum system eliminates the need for oil lubrication, allowing the pump to operate in any orientation without the risk of failure or environmental contamination.

Our PAV-B8 vacuum pump will be perfect for your vacuum box leak testing applications and can also meet a wide range of other applications.

## Uncompromising reliability, durability and performance

### High Performance

Nominal airflow of 8 m<sup>3</sup>/h and an ultimate vacuum of 150 mbar

### Low Maintenance

100% oil-free operation with self-lubricating graphite vanes

### Reinforced Design

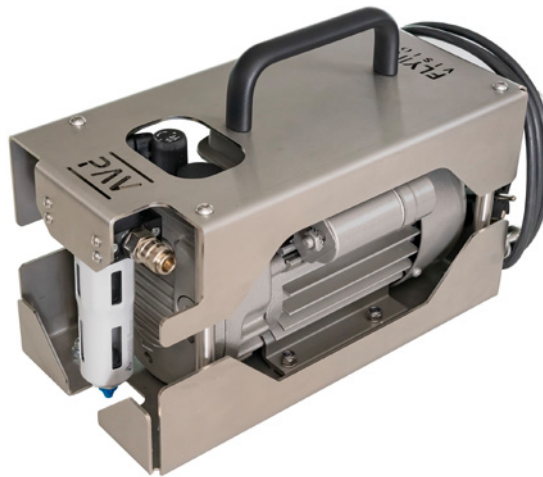
Compact and robust stainless steel casing

### Quiet Operation

Noise level of 58 dB at 50 Hz

### Low Vibrations

Single-shaft direct drive system



### Quick Pneumatic Connection

Rectus 21 Male Stainless Steel

### Adjustment Valve

Adjustable minimum vacuum valve

### Exhaust Valve

Automatic dust-proof system

### Filtration System

Dual-phase filter for particles/water

### Power Supply

Reinforced polyurethane cable

### Ruggedness

Reinforced casing, extended durability, and minimal maintenance for the most challenging

### All-in-One Design

All systems, including the start-up control and pneumatic connections, are integrated and protected within the casing. This maximizes compactness and ensures easy handling, transport, and storage.



## KIT COMPOSITION



### PAV-B8-220 main body including:

- Aluminum carry handle
- On/off switch
- Power cable approximately 1.8m
- Vacuum regulation valve
- Dust-proof exhaust valve
- Dual-phase filter for moisture/dust
- Quick connection system  
Rectus 21 Male



## GENERAL SPECIFICATIONS

<b>Vacuum pump generator type:</b>	Dry vane vacuum pump with self-lubricating, graphite composite vanes
<b>Materials:</b>	Stainless steel, aluminum
<b>Dimensions:</b>	40 x 17 x 23 cm
<b>Weight:</b>	15 kg
<b>Ultimate vacuum:</b>	150 mbar
<b>Nominal airflow:</b>	8 m <sup>3</sup> /h
<b>Power supply / electrical power:</b>	230V 0.35kW at 50Hz and 0.42kW at 60Hz
<b>Connection type:</b>	Rectus 21 Male quick coupling
<b>Protection rating:</b>	IP54
<b>Certifications:</b>	CE - UKCA