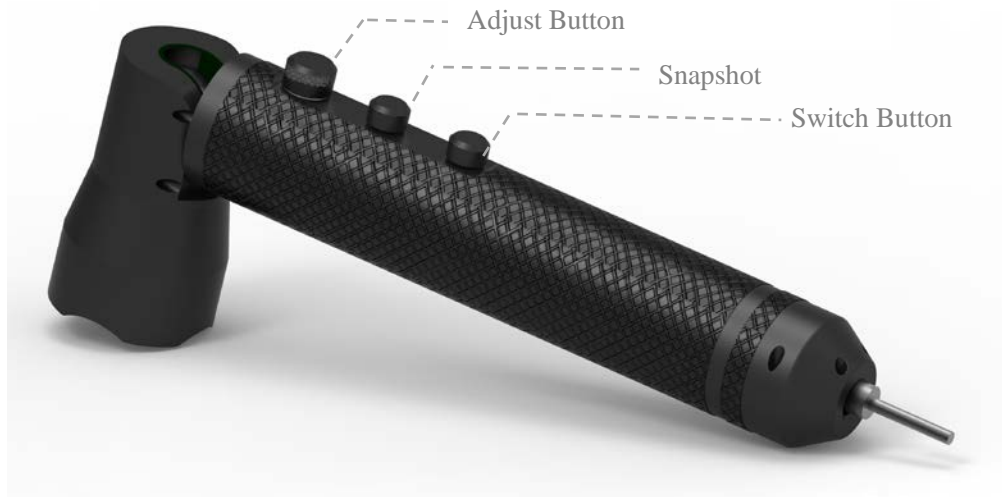


# Vista Eye Operation Manual



7952 Nieman Road, Lenexa, KS 66214-1560 USA  
Phone: 913-685-0675, Fax: 913-685-1125  
[www.ndtsupply.com](http://www.ndtsupply.com), [sales@ndtsupply.com](mailto:sales@ndtsupply.com)

## Crack Dimension Measurement by Vista Eye and PC

### 1. Take Photos with the Vista Eye

1. Connect the Vista Eye with the PC by the cable
2. Open the software “CrackCheck Phoenix Eye” and the Vista Eye will automatically connect with the lamp.
3. Press the *Switch Button* to choose white light or the UV light as needed.
4. Rotate the *Adjust Button* to adjust the intensity as needed.
5. Press the *Snapshot* or the *Camera Icon* on the screen to take the photos.

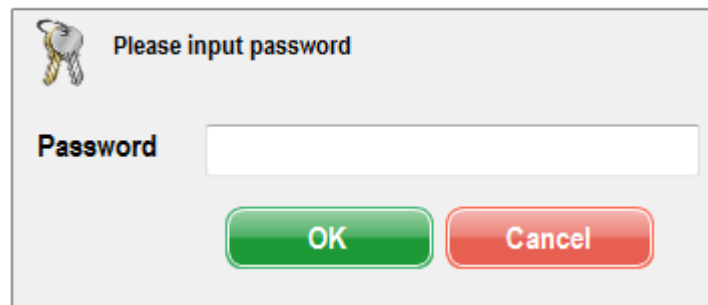
### 2. Calibration

1. Click *New Calib* to start a new calibration.

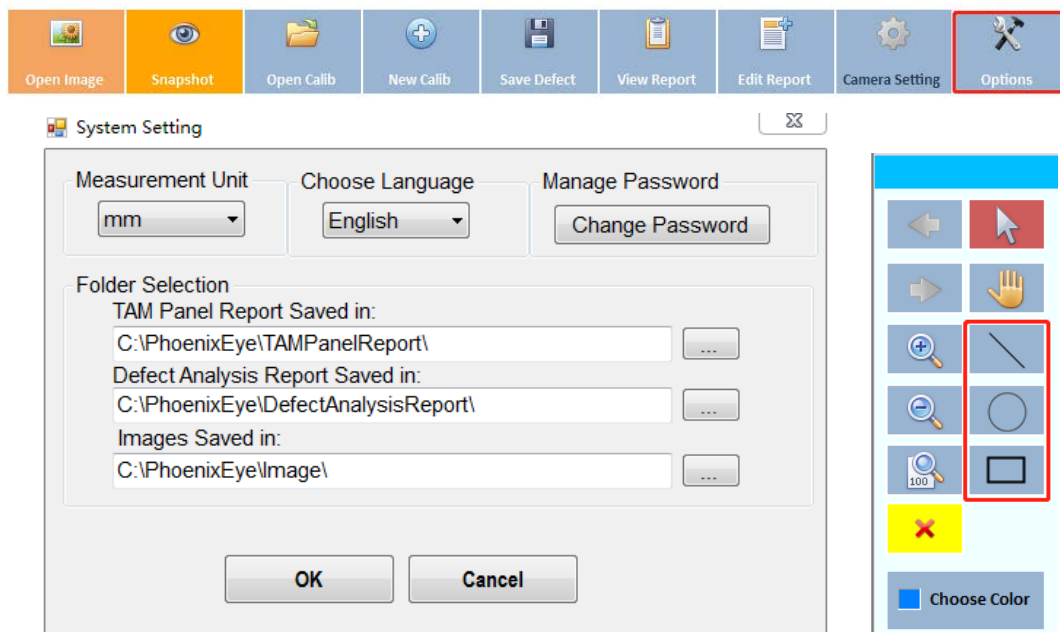


2. Input the password to enter calibration mode, the default password is “111111” and click *OK*.

#### New Calibration



3. Select the *options* to set your preferred setting such as unit (mm or inch), language, the storage path, etc.



4. Zoom-in or zoom-out to adjust the photo in proper size and position.
5. Select from *Line*, *Circle* or *Rectangle* accordingly.

6. Click the mouse as starting point, and draw the selected shape, then click the mouse as the end point to finish drawing. There is a value shown on the screen, it is OK the value is not right at this point.
7. Click *Stop Calibration*, and a window will pop up.
8. Input the information as needed and click *Save*

New Calibration Set-up

Calibration Information	
Calibration	<input type="text"/>
Calibration Shape	Line
Date	28/03/2019
Operator	<input type="text"/>
Phoenix Eye S/N	<input type="text"/>
Comments	<input type="text"/>
<input type="checkbox"/> Set as default calibration	
Calibration Gauge	<input type="text"/>
Gauge Certificate	<input type="text"/> for Calibration Gauge
Calibration Value	<input type="text"/> mm
Password	<input type="text"/> for this Calibration

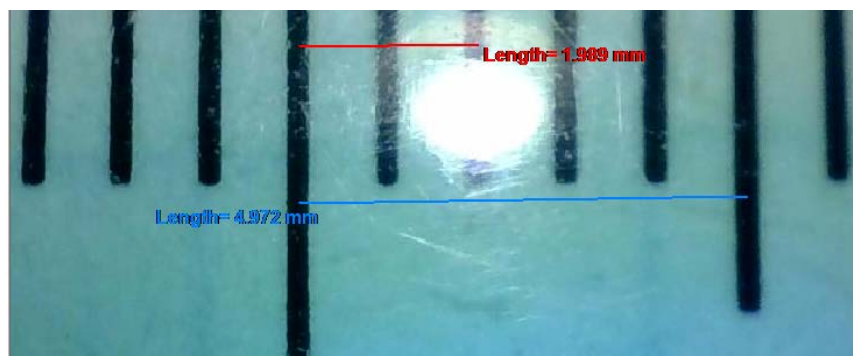
### 3. Crack Dimension Measurement

1. Use the Vista Eye to take a photo of the crack to be measured.
2. Click *Open Calibration* to select the calibration you will use and input the password accordingly



*\*Note: If you don't choose calibration, the system will automatically use your default calibration.*

3. Select the *options* to set your preferred setting such as unit (mm or inch), color of the drawing, the storage path, etc.
4. Zoom-in or zoom-out to adjust the photo in proper size and position.
5. Select from *Line*, *Circle* or *Rectangle* accordingly.
6. Click the mouse as starting point, and draw the selected shape, then click the mouse as the end point to finish drawing
7. The dimension appears by the crack
8. Multiple cracks can be measured in the same photo is needed.



#### 4. Save the defect Measurement

1. Click *Save Defect* and a window will pop up.



2. Input the information as needed and click *Save*.

A screenshot of a 'Defect Report Details' dialog box. At the top, there are two radio buttons for 'Defect Type': 'TAM Panel' (selected) and 'Part Defects'. Below this, there are several input fields: 'Operator', 'Part No' (containing 'P01'), 'Date' (containing '28/03/2019'), and another 'Operator' field. To the right, there are fields for 'Company', 'Part Details', and 'Comments'. At the bottom, there are two buttons: a green 'Save' button and a red 'Cancel' button.

#### 5. Report Generation

1. After saving the defect, click end report and a window will pop up.

A screenshot of a 'File Save As' dialog box. It contains a text box for 'Folder Path' with the value 'C:\PhoenixEye\DefectAnalysisReport\'. Below it is an empty text box for 'File Name'. At the bottom, there are two buttons: a green 'OK' button and a red 'Cancel' button.

2. Name the file and click OK, the report will be automatically generated.

