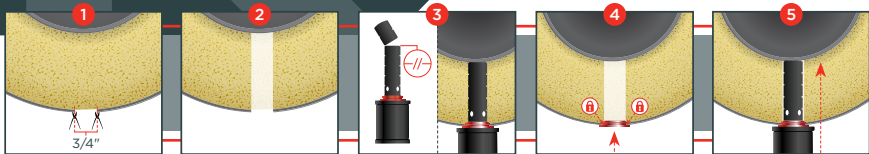


# WaterIndicator

INTEGRITY PRODUCTS



Always wear appropriate PPE (personal protective equipment) which conforms to applicable work safe standards.



**STEP 1** Cut/drill a 3/4" hole in the desired location in cladding using tin snips or a hole saw. *ensure the hole saw only penetrates the cladding*

**STEP 2** Core out insulation.  
**STEP 3** Adjust the length of the Water Indicator by cutting to match the insulation thickness.

**STEP 4** Install silicone grommet into the cut out hole in the cladding.

**STEP 5** Insert Water Indicator into silicone grommet and push fully into place.