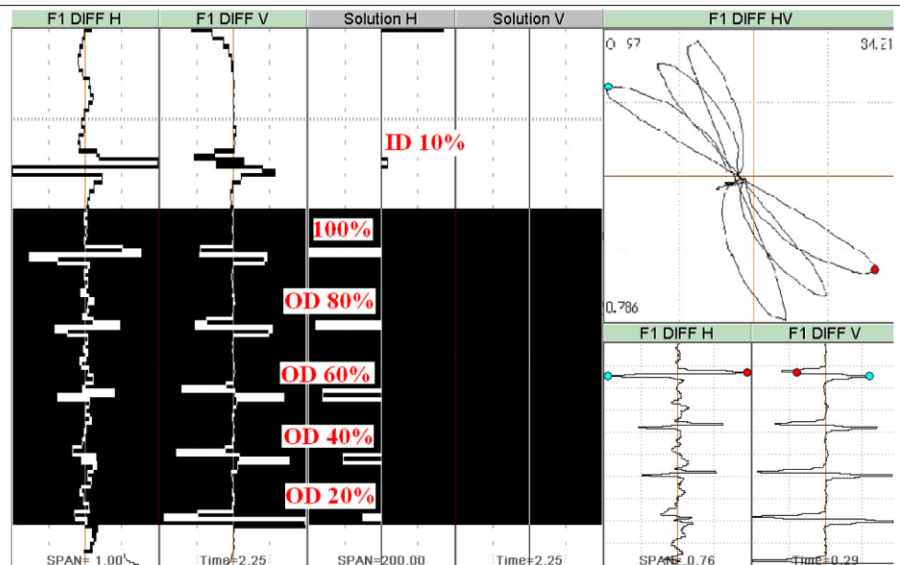


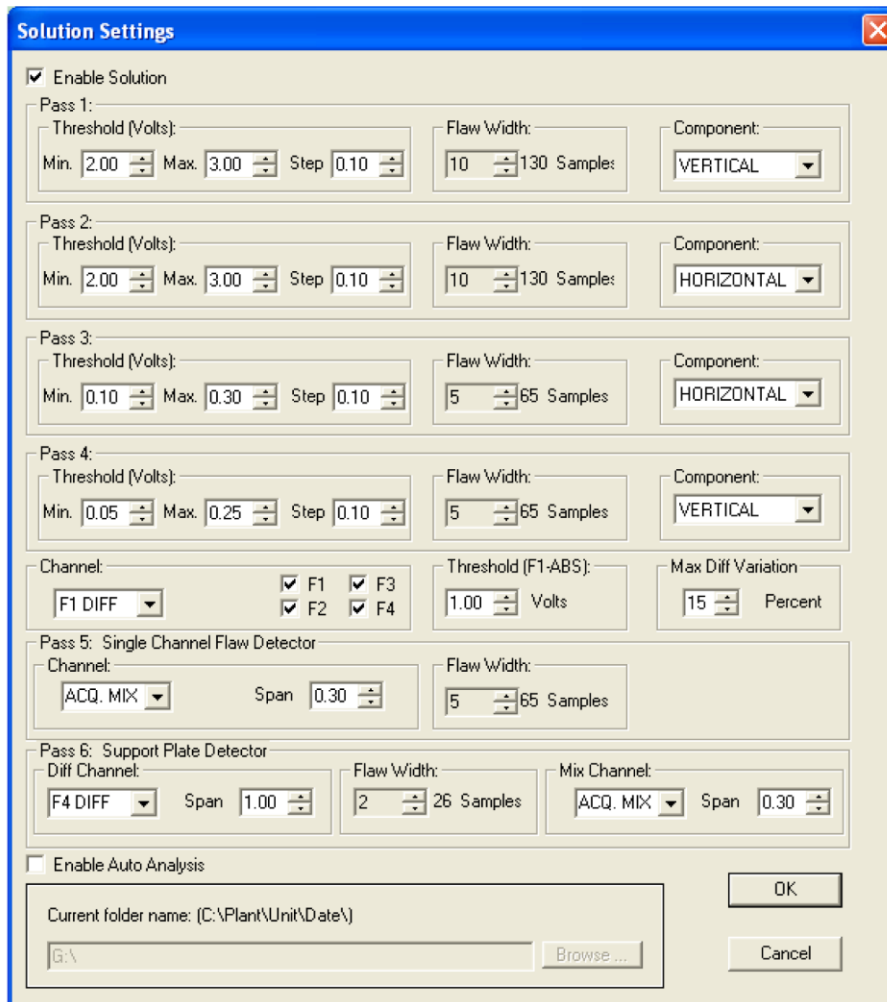


TX-SOLUTION SOFTWARE

TesTex, Inc. has developed the TX-Solution™ software for use with the TX-4400 Eddy Current System. The TX-Solution is an automated analysis program that can be used for tube by tube analysis or it can be used to analyze a whole unit. The software uses specialized algorithms to point out signals of interest within the waveform. Once these signals are found, the software assigns an appropriate wall loss value to the indication. TX-Solution is very user friendly and all the controls to run this software are set up in just one window.



ASME Calibration Waveform



Solution Settings

☒ Enable Solution

Pass 1:
 Threshold (Volts): Min. 2.00 Max. 3.00 Step 0.10
 Flaw Width: 10 130 Samples
 Component: VERTICAL

Pass 2:
 Threshold (Volts): Min. 2.00 Max. 3.00 Step 0.10
 Flaw Width: 10 130 Samples
 Component: HORIZONTAL

Pass 3:
 Threshold (Volts): Min. 0.10 Max. 0.30 Step 0.10
 Flaw Width: 5 65 Samples
 Component: HORIZONTAL

Pass 4:
 Threshold (Volts): Min. 0.05 Max. 0.25 Step 0.10
 Flaw Width: 5 65 Samples
 Component: VERTICAL

Channel: F1 DIFF ☒ F1 ☒ F3 ☒ F2 ☒ F4
 Threshold (F1-ABS): 1.00 Volts
 Max Diff Variation: 15 Percent

Pass 5: Single Channel Flaw Detector
 Channel: ACQ. MIX Span 0.30
 Flaw Width: 5 65 Samples

Pass 6: Support Plate Detector
 Diff Channel: F4 DIFF Span 1.00
 Flaw Width: 2 26 Samples
 Mix Channel: ACQ. MIX Span 0.30

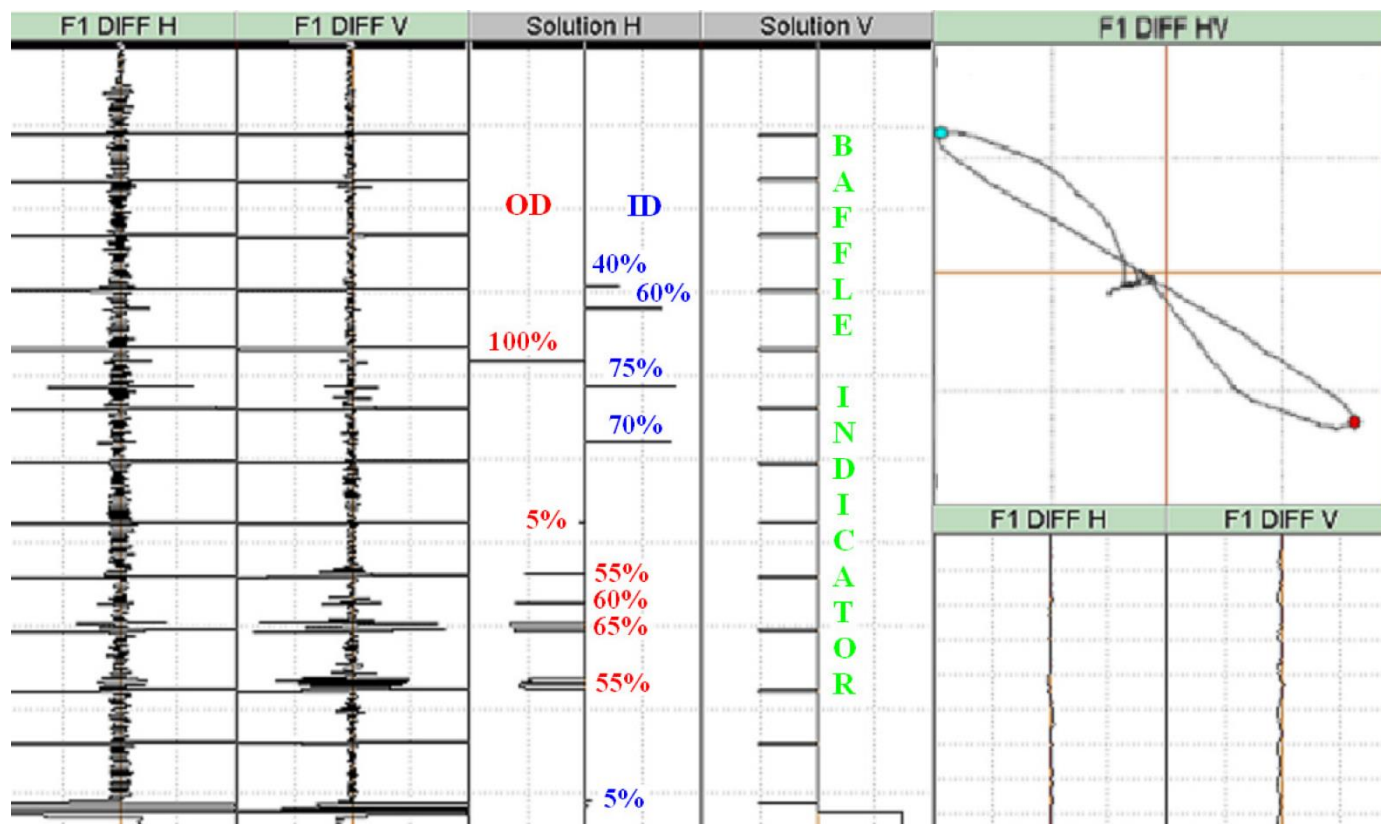
☐ Enable Auto Analysis

Current folder name: (C:\Plant\Unit\Date\)
 G:\ Browse ...

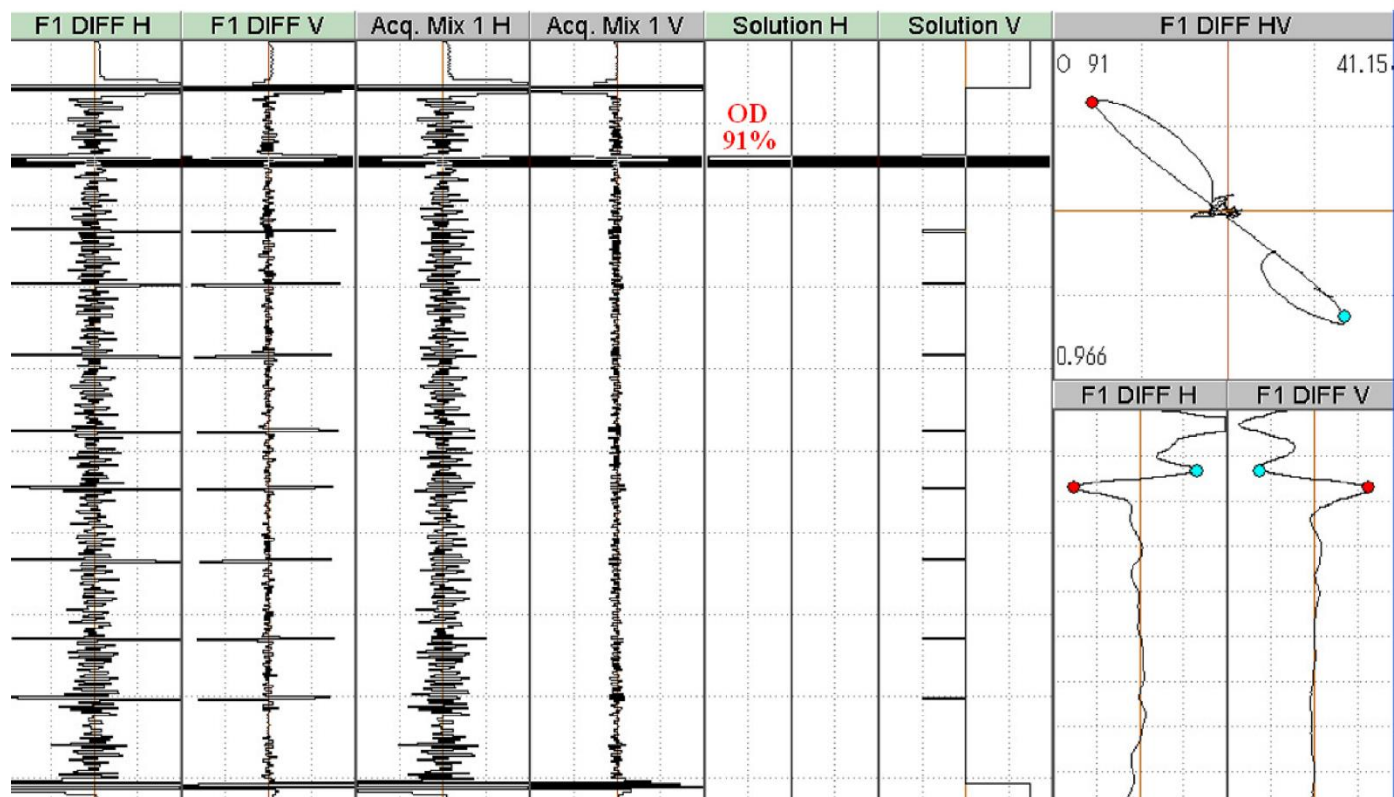
OK Cancel

Solution set up window

- Windows XP and Vista compatible
- TX-Solution™ controls are all set from just one panel
- All controls are fully adjustable from flaw thresholds to the maximum percentage difference between channels for false indications
- A full length tube can be analyzed in less than one second
- A 1,000 tube unit can be analyzed in less than 20 minutes
- Sorts indications and move waveforms into 10% wall loss folders
- Shows the location of every support plate for flaw location reporting
- Can be set to compare all 4 frequencies to rule out false positives
- Single channel flaw detector for mix channel indications such as baffle cutting or fret wear
- Real time secondary check of analysis by the computer for the analyst



Solution showing several defects within a single tube



Solution showing an OD defect under a support plate