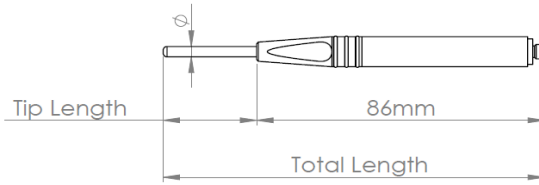


### Straight - Absolute with plastic handle coding:



Micro Connector

### Standard

ETHer NDE Part No.	Centre Frequency	Tip Length (Total Length)	ØTip	Type
<b>Probe, Shielded, Plastic Handle, Straight:</b>				
<b>PS200PS028-114N</b>	200kHz	28mm Tip Length (Total Length 114mm, 4.5") (Straight Shank)	4.45	Absolute
<b>PS200PS028-114F</b>	200kHz	28mm Tip Length (Total Length 114mm, 4.5") (Straight Shank)	3.30 (Fine)	Absolute
<b>PS500PS028-114N</b>	500kHz	28mm Tip Length (Total Length 114mm, 4.5") (Straight Shank)	4.45	Absolute
<b>PS500PS028-114F</b>	500kHz	28mm Tip Length (Total Length 114mm, 4.5") (Straight Shank)	3.30 (Fine)	Absolute
<b>PS002PS028-114N</b>	2MHz	28mm Tip Length (Total Length 114mm, 4.5") (Straight Shank)	3.30	Absolute
<b>PS002PS028-114F</b>	2MHz	28mm Tip Length (Total Length 114mm, 4.5") (Straight Shank)	2.34 (Fine)	Absolute
<b>PS006PS028-114N</b>	6MHz	28mm Tip Length (Total Length 114mm, 4.5") (Straight Shank)	2.34	Absolute
Please see matrix below for other options, specials available on request.				

### Other

#### Straight Probe Example: **PS200PS028-114N**

PS	Centre Frequency	Handle	Tip Type	Tip Length (mm) - Total Length (mm)	Tip Diameter (mm)
<b>PS</b>	<b>200</b>	<b>P</b>	<b>S</b>	<b>028-114</b>	<b>N</b>
	200 = 200kHz	Plastic	Straight	028-114 = Tip Length 28mm - Total Length 114mm (4.5")	N = Normal (200kHz = Dia 4.45mm)
	500 = 500kHz			048-127 = Tip Length 48mm - Total Length 127mm (5.0")	N = Normal(500kHz = Dia 4.45mm)
	002 = 2MHz			066-152 = Tip Length 66mm - Total Length 152mm (6.0")	N = Normal(2MHz = Dia 3.30mm)
	006 = 6MHz			117-203 = Tip Length 117mm - Total Length 203mm (8.0")	N = (6MHz = Dia 2.34mm)
				168-254 = Tip Length 168mm - Total Length 254mm (10.0")	F = Fine(200k = Dia 3.30mm)
				219-305 = Tip Length 219mm - Total Length 305mm (12.0")	F = Fine(500kHz = Dia 3.30mm)
					F = Fine(2MHz = Dia 2.34mm)

Other variants available on request.

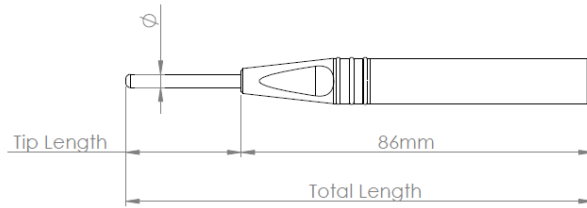
#### Leads to fit above probes:

ETHer NDE Part No.	Description	Instrument	Connector Instrument End	Connector Probe End	Cable Length	Configuration
<b>ALLCX-M02-015A</b>	Lead	WeldCheck/AeroCheck/Vantage/ETi	Lemo Coaxial	Micro Plug	1.5m	Absolute
<b>ALL12-M02-015A</b>	Lead	WeldCheck/AeroCheck/Hocking	Lemo 12-Way	Micro Plug	1.5m	Absolute
<b>ALL07-M02-015A</b>	Lead	Hocking	Lemo 7-Way	Micro Plug	1.5m	Absolute
<b>ALB02-M02-015A</b>	Lead	Various	BNC Plug	Micro Plug	1.5m	Absolute

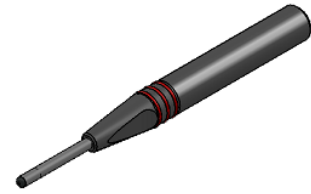
**Straight – Bridge (IB Tech Inside) with plastic handle coding:**



7952 Nieman Road, Lenexa, KS 66214-1660 USA  
 Phone: 913-685-0675, Fax: 913-685-1125  
[www.ndtsupply.com](http://www.ndtsupply.com), [sales@ndtsupply.com](mailto:sales@ndtsupply.com)



4-Way Lemo Connector



**Standard**

ETHer NDE Part No.	Centre Frequency	Tip Length (Total Length)	ØTip	Type
<b>Probe, Shielded, Plastic Handle, Straight:</b>				
<b>PS200PS028-114NB</b>	200kHz	28mm Tip Length (Total Length 114mm, 4.5") (Straight Shank)	4.45	Bridge
<b>PS200PS028-114FB</b>	200kHz	28mm Tip Length (Total Length 114mm, 4.5") (Straight Shank)	3.30 (Fine)	Bridge
<b>PS500PS028-114NB</b>	500kHz	28mm Tip Length (Total Length 114mm, 4.5") (Straight Shank)	4.45	Bridge
<b>PS500PS028-114FB</b>	500kHz	28mm Tip Length (Total Length 114mm, 4.5") (Straight Shank)	3.30 (Fine)	Bridge
<b>PS002PS028-114NB</b>	2MHz	28mm Tip Length (Total Length 114mm, 4.5") (Straight Shank)	3.30	Bridge
<b>PS002PS028-114FB</b>	2MHz	28mm Tip Length (Total Length 114mm, 4.5") (Straight Shank)	2.34 (Fine)	Bridge
<b>PS006PS028-114NB</b>	6MHz	28mm Tip Length (Total Length 114mm, 4.5") (Straight Shank)	2.34	Bridge
Please see matrix below for other options, specials available on request.				

**Other**

**Straight Probe Example: PS200PS028-114NB**

PS	Centre Frequency	Handle	Tip Type	Tip Length (mm) - Total Length (mm)	Tip Diameter (mm)
<b>PS</b>	<b>200</b>	<b>P</b>	<b>S</b>	<b>028-114</b>	<b>NB</b>
	200 = 200kHz	Plastic	Straight	028-114 = Tip Length 28mm - Total Length 114mm (4.5")	NB = Normal (200kHz = Dia 4.45mm)
	500 = 500kHz			048-127 = Tip Length 48mm - Total Length 127mm (5.0")	NB = Normal (500kHz = Dia 4.45mm)
	002 = 2MHz			066-152 = Tip Length 66mm - Total Length 152mm (6.0")	NB = Normal (2MHz = Dia 3.30mm)
	006 = 6MHz			117-203 = Tip Length 117mm - Total Length 203mm (8.0")	NB = (6MHz = Dia 2.34mm)
				168-254 = Tip Length 168mm - Total Length 254mm (10.0")	FB = Fine(200k = Dia 3.30mm)
				219-305 = Tip Length 219mm - Total Length 305mm (12.0")	FB = Fine(500kHz = Dia 3.30mm)
					FB = Fine(2MHz = Dia 2.34mm)

Other variants available on request.

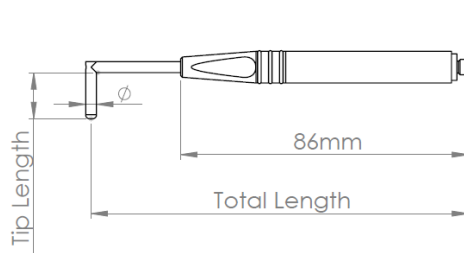
**Leads to fit above probes:**

ETHer NDE Part No.	Description	Instrument	Connector Instrument End	Connector Probe End	Cable Length	Configuration
<b>ALFTRI-L04-015</b>	Lead	Victor/Veritor	Fischer Triax	Lemo 4-Way Plug	1.5m	Bridge
<b>ALL12-L04-015B</b>	Lead	WeldCheck/ AeroCheck/ Vantage/ETi	Lemo 12-Way	Lemo 4-Way Plug	1.5m	Bridge
<b>ALL07-L04-015B</b>	Lead	Hocking	Lemo 7-Way	Lemo 4-Way Plug	1.5m	Bridge



7952 Nieman Road, Lenexa, KS 66214-1560 USA  
 Phone: 913-685-0675, Fax: 913-685-1125  
[www.ndtsupply.com](http://www.ndtsupply.com), [sales@ndtsupply.com](mailto:sales@ndtsupply.com)

## 90deg Tip - Absolute with plastic handle coding:



### Standard

ETHer NDE Part No.	Centre Frequency	Tip Length (Total Length)	ØTip
<b>Probe, Shielded, Plastic Handle, Right angled 90deg Tip:</b>			
<b>PS200PR050-114N</b>	200kHz	5.0 (MIN) Tip Length (Total Length 114mm, 4.5") (90deg Tip Shank)	4.45
<b>PS200PR027-114F</b>	200kHz	2.7 (MIN) Tip Length (Total Length 114mm, 4.5") (90deg Tip Shank)	3.30 (Fine)
<b>PS500PR050-114N</b>	500kHz	5.0 (MIN) Tip Length (Total Length 114mm, 4.5") (90deg Tip Shank)	4.45
<b>PS500PR027-114F</b>	500kHz	2.7 (MIN) Tip Length (Total Length 114mm, 4.5") (90deg Tip Shank)	3.30 (Fine)
<b>PS002PR027-114N</b>	2MHz	2.7 (MIN) Tip Length (Total Length 114mm, 4.5") (90deg Tip Shank)	3.30
<b>PS002PR017-114F</b>	2MHz	1.7 (MIN) Tip Length (Total Length 114mm, 4.5") (90deg Tip Shank)	2.34 (Fine)
<b>PS006PR017-114N</b>	6MHz	1.7 (MIN) Tip Length (Total Length 114mm, 4.5") (90deg Tip Shank)	2.34
Please see matrix below for other options, specials available on request.			

### Other

#### 90deg Tip Probe Example: **PS200PR050-114N**

PS	Centre Frequency	Handle	Tip Type	Tip Length (mm) - Total Length (mm)	Tip Diameter (mm)
<b>200</b>	<b>200</b>	<b>P</b>	<b>R</b>	<b>050-114</b>	<b>N</b>
	200 = 200kHz	Plastic	Right	<b>050-114</b> = Tip Length 5mm - Total Length 114mm (4.5")	<b>N</b> = Normal (200kHz = Dia 4.45mm)
	500 = 500kHz		angled	<b>050-127</b> = Tip Length 5mm - Total Length 127mm (5.0")	<b>N</b> = Normal (500kHz = Dia 4.45mm)
			90deg	<b>050-152</b> = Tip Length 5mm - Total Length 152mm (6.0")	
			Tip	<b>050-203</b> = Tip Length 5mm - Total Length 203mm (8.0")	
				<b>050-254</b> = Tip Length 5mm - Total Length 254mm (10.0")	
				<b>050-305</b> = Tip Length 5mm - Total Length 305mm (12.0")	
				<b>064-114</b> = Tip Length 6.4mm - Total Length 114mm (4.5")	
				<b>064-127</b> = Tip Length 6.4mm - Total Length 127mm (5.0")	
				<b>064-152</b> = Tip Length 6.4mm - Total Length 152mm (6.0")	
				<b>064-203</b> = Tip Length 6.4mm - Total Length 203mm (8.0")	
				<b>064-254</b> = Tip Length 6.4mm - Total Length 254mm (10.0")	
				<b>064-305</b> = Tip Length 6.4mm - Total Length 305mm (12.0")	
				<b>127-114</b> = Tip Length 12.7mm - Total Length 114mm (4.5")	
				<b>127-127</b> = Tip Length 12.7mm - Total Length 127mm (5.0")	
				<b>127-152</b> = Tip Length 12.7mm - Total Length 152mm (6.0")	
				<b>127-203</b> = Tip Length 12.7mm - Total Length 203mm (8.0")	
				<b>127-254</b> = Tip Length 12.7mm - Total Length 254mm (10.0")	
				<b>127-305</b> = Tip Length 12.7mm - Total Length 305mm (12.0")	
				<b>190-114</b> = Tip Length 19.0mm - Total Length 114mm (4.5")	
				<b>190-127</b> = Tip Length 19.0mm - Total Length 127mm (5.0")	

Centre Frequency	Handle	Tip Type	Tip Length (mm) - Total Length (mm)	Tip Diameter (mm)		
200 = 200kHz 500 = 500kHz	Plastic	Right	190-152 = Tip Length 19.0mm - Total Length 152mm (6.0")	N = Normal (200kHz = Dia 4.45mm)		
		angled	190-203 = Tip Length 19.0mm - Total Length 203mm (8.0")	N = Normal (500kHz = Dia 4.45mm)		
		90deg	190-254 = Tip Length 19.0mm - Total Length 254mm (10.0")			
		Tip	190-305 = Tip Length 19.0mm - Total Length 305mm (12.0")			
				245-114 = Tip Length 25.4mm - Total Length 114mm (4.5")		
				254-127 = Tip Length 25.4mm - Total Length 127mm (5.0")		
				254-152 = Tip Length 25.4mm - Total Length 152mm (6.0")		
				254-203 = Tip Length 25.4mm - Total Length 203mm (8.0")		
				254-254 = Tip Length 25.4mm - Total Length 254mm (10.0")		
				254-305 = Tip Length 25.4mm - Total Length 305mm (12.0")		
		200 = 200kHz 500 = 500kHz 002 = 2MHz	Plastic	Right	027-114 = Tip Length 2.7mm - Total Length 114mm (4.5")	F = Fine (200k = Dia 3.30mm)
				angled	027-127 = Tip Length 2.7mm - Total Length 127mm (5.0")	F = Fine (500kHz = Dia 3.30mm)
				90deg	027-152 = Tip Length 2.7mm - Total Length 152mm (6.0")	N = Normal (2MHz = Dia 3.30mm)
				Tip	027-203 = Tip Length 2.7mm - Total Length 203mm (8.0")	
				027-254 = Tip Length 2.7mm - Total Length 254mm (10.0")		
				027-305 = Tip Length 2.7mm - Total Length 305mm (12.0")		
				064-114 = Tip Length 6.4mm - Total Length 114mm (4.5")		
				064-127 = Tip Length 6.4mm - Total Length 127mm (5.0")		
				064-152 = Tip Length 6.4mm - Total Length 152mm (6.0")		
				064-203 = Tip Length 6.4mm - Total Length 203mm (8.0")		
				064-254 = Tip Length 6.4mm - Total Length 254mm (10.0")		
				064-305 = Tip Length 6.4mm - Total Length 305mm (12.0")		
				127-114 = Tip Length 12.7mm - Total Length 114mm (4.5")		
				127-127 = Tip Length 12.7mm - Total Length 127mm (5.0")		
		127-152 = Tip Length 12.7mm - Total Length 152mm (6.0")				
		127-203 = Tip Length 12.7mm - Total Length 203mm (8.0")				
		127-254 = Tip Length 12.7mm - Total Length 254mm (10.0")				
		127-305 = Tip Length 12.7mm - Total Length 305mm (12.0")				
		190-114 = Tip Length 19.0mm - Total Length 114mm (4.5")				
		190-127 = Tip Length 19.0mm - Total Length 127mm (5.0")				
		190-152 = Tip Length 19.0mm - Total Length 152mm (6.0")				
		190-203 = Tip Length 19.0mm - Total Length 203mm (8.0")				
		190-254 = Tip Length 19.0mm - Total Length 254mm (10.0")				
		190-305 = Tip Length 19.0mm - Total Length 305mm (12.0")				
		245-114 = Tip Length 25.4mm - Total Length 114mm (4.5")				
		254-127 = Tip Length 25.4mm - Total Length 127mm (5.0")				
		254-152 = Tip Length 25.4mm - Total Length 152mm (6.0")				
		254-203 = Tip Length 25.4mm - Total Length 203mm (8.0")				
		254-254 = Tip Length 25.4mm - Total Length 254mm (10.0")				
		254-305 = Tip Length 25.4mm - Total Length 305mm (12.0")				
002 = 2MHz 006 = 6MHz	Plastic	Right	027-114 = Tip Length 2.7mm - Total Length 114mm (4.5")	F = Fine (2MHz = Dia 2.34mm)		
		angled	027-127 = Tip Length 2.7mm - Total Length 127mm (5.0")	N = Normal (6MHz = Dia 2.34mm)		
		90deg	027-152 = Tip Length 2.7mm - Total Length 152mm (6.0")			
		Tip	027-203 = Tip Length 2.7mm - Total Length 203mm (8.0")			
				027-254 = Tip Length 2.7mm - Total Length 254mm (10.0")		
				027-305 = Tip Length 2.7mm - Total Length 305mm (12.0")		



<b>002</b> = 2MHz	<b>Plastic</b>	<b>Right</b>	<b>064-114</b> = Tip Length 6.4mm - Total Length 114mm (4.5")	<b>F</b> = Fine (2MHz = Dia 2.34mm)
<b>006</b> = 6MHz		angled	<b>064-127</b> = Tip Length 6.4mm - Total Length 127mm (5.0")	<b>N</b> = Normal (6MHz = Dia 2.34mm)
		90deg	<b>064-152</b> = Tip Length 6.4mm - Total Length 152mm (6.0")	
		Tip	<b>064-203</b> = Tip Length 6.4mm - Total Length 203mm (8.0")	
			<b>064-254</b> = Tip Length 6.4mm - Total Length 254mm (10.0")	
			<b>064-305</b> = Tip Length 6.4mm - Total Length 305mm (12.0")	
<hr/>				
			<b>127-114</b> = Tip Length 12.7mm - Total Length 114mm (4.5")	
			<b>127-127</b> = Tip Length 12.7mm - Total Length 127mm (5.0")	
			<b>127-152</b> = Tip Length 12.7mm - Total Length 152mm (6.0")	
			<b>127-203</b> = Tip Length 12.7mm - Total Length 203mm (8.0")	
			<b>127-254</b> = Tip Length 12.7mm - Total Length 254mm (10.0")	
			<b>127-305</b> = Tip Length 12.7mm - Total Length 305mm (12.0")	
<hr/>				
			<b>190-114</b> = Tip Length 19.0mm - Total Length 114mm (4.5")	
			<b>190-127</b> = Tip Length 19.0mm - Total Length 127mm (5.0")	
			<b>190-152</b> = Tip Length 19.0mm - Total Length 152mm (6.0")	
			<b>190-203</b> = Tip Length 19.0mm - Total Length 203mm (8.0")	
			<b>190-254</b> = Tip Length 19.0mm - Total Length 254mm (10.0")	
			<b>190-305</b> = Tip Length 19.0mm - Total Length 305mm (12.0")	
<hr/>				
			<b>245-114</b> = Tip Length 25.4mm - Total Length 114mm (4.5")	
			<b>254-127</b> = Tip Length 25.4mm - Total Length 127mm (5.0")	
			<b>254-152</b> = Tip Length 25.4mm - Total Length 152mm (6.0")	
			<b>254-203</b> = Tip Length 25.4mm - Total Length 203mm (8.0")	
			<b>254-254</b> = Tip Length 25.4mm - Total Length 254mm (10.0")	
			<b>254-305</b> = Tip Length 25.4mm - Total Length 305mm (12.0")	

Other variants available on request.

**Leads to fit above probes:**

ETHer NDE Part No.	Description	Instrument	Connector Instrument End	Connector Probe End	Cable Length	Configuration
<b>ALLCX-M02-015A</b>	Lead	WeldCheck/ AeroCheck/ Vantage/ETi	Lemo Coaxial	Micro Plug	1.5m	Absolute
<b>ALL12-M02-015A</b>	Lead	WeldCheck/ AeroCheck/ Vantage/ETi/Hocking	Lemo 12-Way	Micro Plug	1.5m	Absolute
<b>ALL07-M02-015A</b>	Lead	Hocking	Lemo 7-Way	Micro Plug	1.5m	Absolute
<b>ALB02-M02-015A</b>	Lead	Various	BNC Plug	Micro Plug	1.5m	Absolute

**NDT Supply.com, Inc.**

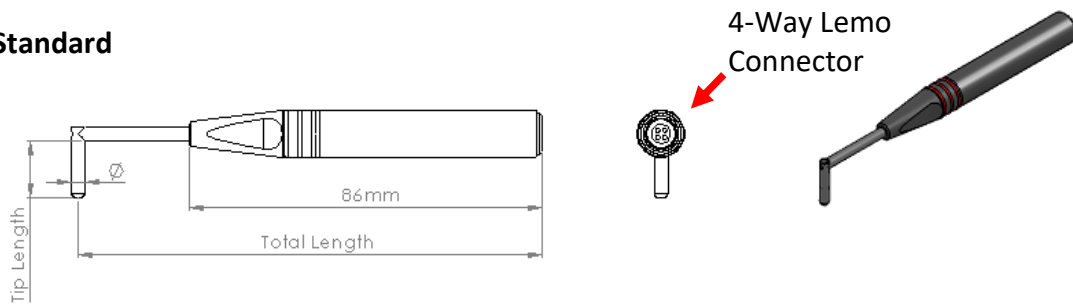
7952 Nieman Road  
Lenexa, KS 66214-1560 USA

Phone: 913-685-0675, Fax: 913-685-1125  
e-mail: [sales@ndtsupply.com](mailto:sales@ndtsupply.com), [www.ndtsupply.com](http://www.ndtsupply.com)



## 90deg Tip - Bridge (IB Tech Inside) with plastic handle coding:

### Standard



ETHer NDE Part No.	Centre Frequency	Tip Length (Total Length)	ØTip
<b>Probe, Shielded, Plastic Handle, Right angled 90deg Tip:</b>			
<b>PS200PR050-114NB</b>	200kHz	5.0 (MIN) Tip Length (Total Length 114mm, 4.5") (90deg Tip Shank)	4.45
<b>PS200PR027-114FB</b>	200kHz	2.7 (MIN) Tip Length (Total Length 114mm, 4.5") (90deg Tip Shank)	3.30 (Fine)
<b>PS500PR050-114NB</b>	500kHz	5.0 (MIN) Tip Length (Total Length 114mm, 4.5") (90deg Tip Shank)	4.45
<b>PS500PR027-114FB</b>	500kHz	2.7 (MIN) Tip Length (Total Length 114mm, 4.5") (90deg Tip Shank)	3.30 (Fine)
<b>PS002PR027-114NB</b>	2MHz	2.7 (MIN) Tip Length (Total Length 114mm, 4.5") (90deg Tip Shank)	3.30
<b>PS002PR017-114FB</b>	2MHz	1.7 (MIN) Tip Length (Total Length 114mm, 4.5") (90deg Tip Shank)	2.34 (Fine)
<b>PS006PR017-114NB</b>	6MHz	1.7 (MIN) Tip Length (Total Length 114mm, 4.5") (90deg Tip Shank)	2.34

Please see matrix below for other options, specials available on request.

### Other

#### 90deg Tip Probe Example: **PS200PR050-114NB**

PS	Centre Frequency	Handle	Tip Type	Tip Length (mm) - Total Length (mm)	Tip Diameter (mm)
<b>PS</b>	<b>200</b>	<b>P</b>	<b>R</b>	<b>050-114</b>	<b>NB</b>
	200 = 200kHz	Plastic	Right	<b>050-114</b> = Tip Length 5mm - Total Length 114mm (4.5")	<b>NB</b> = Normal (200kHz = Dia 4.45mm)
	500 = 500kHz		angled	<b>050-127</b> = Tip Length 5mm - Total Length 127mm (5.0")	<b>NB</b> = Normal (500kHz = Dia 4.45mm)
			90deg	<b>050-152</b> = Tip Length 5mm - Total Length 152mm (6.0")	
			Tip	<b>050-203</b> = Tip Length 5mm - Total Length 203mm (8.0")	
				<b>050-254</b> = Tip Length 5mm - Total Length 254mm (10.0")	
				<b>050-305</b> = Tip Length 5mm - Total Length 305mm (12.0")	
				<b>064-114</b> = Tip Length 6.4mm - Total Length 114mm (4.5")	
				<b>064-127</b> = Tip Length 6.4mm - Total Length 127mm (5.0")	
				<b>064-152</b> = Tip Length 6.4mm - Total Length 152mm (6.0")	
				<b>064-203</b> = Tip Length 6.4mm - Total Length 203mm (8.0")	
				<b>064-254</b> = Tip Length 6.4mm - Total Length 254mm (10.0")	
				<b>064-305</b> = Tip Length 6.4mm - Total Length 305mm (12.0")	
				<b>127-114</b> = Tip Length 12.7mm - Total Length 114mm (4.5")	
				<b>127-127</b> = Tip Length 12.7mm - Total Length 127mm (5.0")	
				<b>127-152</b> = Tip Length 12.7mm - Total Length 152mm (6.0")	
				<b>127-203</b> = Tip Length 12.7mm - Total Length 203mm (8.0")	
				<b>127-254</b> = Tip Length 12.7mm - Total Length 254mm (10.0")	
				<b>127-305</b> = Tip Length 12.7mm - Total Length 305mm (12.0")	
				<b>190-114</b> = Tip Length 19.0mm - Total Length 114mm (4.5")	
				<b>190-127</b> = Tip Length 19.0mm - Total Length 127mm (5.0")	



Centre Frequency	Handle	Tip Type	Tip Length (mm) - Total Length (mm)	Tip Diameter (mm)		
<b>200</b> = 200kHz <b>500</b> = 500kHz	Plastic	Right	<b>190-152</b> = Tip Length 19.0mm - Total Length 152mm (6.0")	<b>NB</b> = Normal (200kHz = Dia 4.45mm)		
		angled	<b>190-203</b> = Tip Length 19.0mm - Total Length 203mm (8.0")	<b>NB</b> = Normal (500kHz = Dia 4.45mm)		
		90deg	<b>190-254</b> = Tip Length 19.0mm - Total Length 254mm (10.0")			
		Tip	<b>190-305</b> = Tip Length 19.0mm - Total Length 305mm (12.0")			
			<b>245-114</b> = Tip Length 25.4mm - Total Length 114mm (4.5")			
			<b>254-127</b> = Tip Length 25.4mm - Total Length 127mm (5.0")			
			<b>254-152</b> = Tip Length 25.4mm - Total Length 152mm (6.0")			
			<b>254-203</b> = Tip Length 25.4mm - Total Length 203mm (8.0")			
			<b>254-254</b> = Tip Length 25.4mm - Total Length 254mm (10.0")			
			<b>254-305</b> = Tip Length 25.4mm - Total Length 305mm (12.0")			
		<b>200</b> = 200kHz <b>500</b> = 500kHz <b>002</b> = 2MHz	Plastic	Right	<b>027-114</b> = Tip Length 2.7mm - Total Length 114mm (4.5")	<b>FB</b> = Fine (200k = Dia 3.30mm)
				angled	<b>027-127</b> = Tip Length 2.7mm - Total Length 127mm (5.0")	<b>FB</b> = Fine (500kHz = Dia 3.30mm)
				90deg	<b>027-152</b> = Tip Length 2.7mm - Total Length 152mm (6.0")	<b>NB</b> = Normal (2MHz = Dia 3.30mm)
				Tip	<b>027-203</b> = Tip Length 2.7mm - Total Length 203mm (8.0")	
	<b>027-254</b> = Tip Length 2.7mm - Total Length 254mm (10.0")					
	<b>027-305</b> = Tip Length 2.7mm - Total Length 305mm (12.0")					
	<b>064-114</b> = Tip Length 6.4mm - Total Length 114mm (4.5")					
	<b>064-127</b> = Tip Length 6.4mm - Total Length 127mm (5.0")					
	<b>064-152</b> = Tip Length 6.4mm - Total Length 152mm (6.0")					
	<b>064-203</b> = Tip Length 6.4mm - Total Length 203mm (8.0")					
	<b>064-254</b> = Tip Length 6.4mm - Total Length 254mm (10.0")					
	<b>064-305</b> = Tip Length 6.4mm - Total Length 305mm (12.0")					
	<b>127-114</b> = Tip Length 12.7mm - Total Length 114mm (4.5")					
	<b>127-127</b> = Tip Length 12.7mm - Total Length 127mm (5.0")					
	<b>127-152</b> = Tip Length 12.7mm - Total Length 152mm (6.0")					
	<b>127-203</b> = Tip Length 12.7mm - Total Length 203mm (8.0")					
	<b>127-254</b> = Tip Length 12.7mm - Total Length 254mm (10.0")					
	<b>127-305</b> = Tip Length 12.7mm - Total Length 305mm (12.0")					
	<b>190-114</b> = Tip Length 19.0mm - Total Length 114mm (4.5")					
	<b>190-127</b> = Tip Length 19.0mm - Total Length 127mm (5.0")					
	<b>190-152</b> = Tip Length 19.0mm - Total Length 152mm (6.0")					
	<b>190-203</b> = Tip Length 19.0mm - Total Length 203mm (8.0")					
	<b>190-254</b> = Tip Length 19.0mm - Total Length 254mm (10.0")					
	<b>190-305</b> = Tip Length 19.0mm - Total Length 305mm (12.0")					
	<b>245-114</b> = Tip Length 25.4mm - Total Length 114mm (4.5")					
	<b>254-127</b> = Tip Length 25.4mm - Total Length 127mm (5.0")					
	<b>254-152</b> = Tip Length 25.4mm - Total Length 152mm (6.0")					
	<b>254-203</b> = Tip Length 25.4mm - Total Length 203mm (8.0")					
	<b>254-254</b> = Tip Length 25.4mm - Total Length 254mm (10.0")					
	<b>254-305</b> = Tip Length 25.4mm - Total Length 305mm (12.0")					
<b>002</b> = 2MHz <b>006</b> = 6MHz	Plastic	Right	<b>027-114</b> = Tip Length 2.7mm - Total Length 114mm (4.5")	<b>FB</b> = Fine (2MHz = Dia 2.34mm)		
		angled	<b>027-127</b> = Tip Length 2.7mm - Total Length 127mm (5.0")	<b>NB</b> = Normal (6MHz = Dia 2.34mm)		
		90deg	<b>027-152</b> = Tip Length 2.7mm - Total Length 152mm (6.0")			
		Tip	<b>027-203</b> = Tip Length 2.7mm - Total Length 203mm (8.0")			
			<b>027-254</b> = Tip Length 2.7mm - Total Length 254mm (10.0")			
			<b>027-305</b> = Tip Length 2.7mm - Total Length 305mm (12.0")			



<b>002</b> = 2MHz	<b>Plastic</b>	<b>Right</b>	<b>064-114</b> = Tip Length 6.4mm - Total Length 114mm (4.5")	<b>FB</b> = Fine (2MHz = Dia 2.34mm)
<b>006</b> = 6MHz		<b>angled</b>	<b>064-127</b> = Tip Length 6.4mm - Total Length 127mm (5.0")	<b>NB</b> = Normal (6MHz = Dia 2.34mm)
		<b>90deg</b>	<b>064-152</b> = Tip Length 6.4mm - Total Length 152mm (6.0")	
		<b>Tip</b>	<b>064-203</b> = Tip Length 6.4mm - Total Length 203mm (8.0")	
			<b>064-254</b> = Tip Length 6.4mm - Total Length 254mm (10.0")	
			<b>064-305</b> = Tip Length 6.4mm - Total Length 305mm (12.0")	
			<b>127-114</b> = Tip Length 12.7mm - Total Length 114mm (4.5")	
			<b>127-127</b> = Tip Length 12.7mm - Total Length 127mm (5.0")	
			<b>127-152</b> = Tip Length 12.7mm - Total Length 152mm (6.0")	
			<b>127-203</b> = Tip Length 12.7mm - Total Length 203mm (8.0")	
			<b>127-254</b> = Tip Length 12.7mm - Total Length 254mm (10.0")	
			<b>127-305</b> = Tip Length 12.7mm - Total Length 305mm (12.0")	
			<b>190-114</b> = Tip Length 19.0mm - Total Length 114mm (4.5")	
			<b>190-127</b> = Tip Length 19.0mm - Total Length 127mm (5.0")	
			<b>190-152</b> = Tip Length 19.0mm - Total Length 152mm (6.0")	
			<b>190-203</b> = Tip Length 19.0mm - Total Length 203mm (8.0")	
			<b>190-254</b> = Tip Length 19.0mm - Total Length 254mm (10.0")	
			<b>190-305</b> = Tip Length 19.0mm - Total Length 305mm (12.0")	
			<b>245-114</b> = Tip Length 25.4mm - Total Length 114mm (4.5")	
			<b>254-127</b> = Tip Length 25.4mm - Total Length 127mm (5.0")	
			<b>254-152</b> = Tip Length 25.4mm - Total Length 152mm (6.0")	
			<b>254-203</b> = Tip Length 25.4mm - Total Length 203mm (8.0")	
			<b>254-254</b> = Tip Length 25.4mm - Total Length 254mm (10.0")	
			<b>254-305</b> = Tip Length 25.4mm - Total Length 305mm (12.0")	

Other variants available on request.

**Leads to fit above probes:**

ETHer NDE Part No.	Description	Instrument	Connector Instrument End	Connector Probe End	Cable Length	Configuration
<b>ALFTRI-L04-015</b>	Lead	Victor/Veritor	Fischer Triax	Lemo 4-Way Plug	1.5m	Bridge
<b>ALL12-L04-015B</b>	Lead	WeldCheck/ AeroCheck/ Vantage/ETI/Hocking	Lemo 12-Way	Lemo 4-Way Plug	1.5m	Bridge
<b>ALL07-L04-015B</b>	Lead	Hocking	Lemo 7-Way	Lemo 4-Way Plug	1.5m	Bridge

**NDT Supply.com, Inc.**  
7952 Nieman Road  
Lenexa, KS 66214-1560 USA

Phone: 913-685-0675, Fax: 913-685-1125  
e-mail: [sales@ndtsupply.com](mailto:sales@ndtsupply.com), [www.ndtsupply.com](http://www.ndtsupply.com)

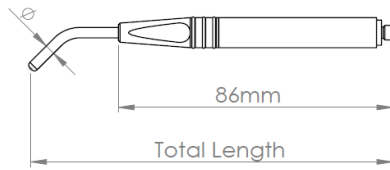




## 45deg Crank – Absolute with plastic handle coding:



7952 Nieman Road, Lenexa, KS 66214-1580 USA  
 Phone: 913-685-0675, Fax: 913-685-1125  
[www.ndtsupply.com](http://www.ndtsupply.com), [sales@ndtsupply.com](mailto:sales@ndtsupply.com)



Micro Connector

### Standard

ETHer NDE Part No.	Centre Frequency	Tip Length (Total Length)	ØTip	Type
<b>Probe, Shielded, Plastic Handle, Crank:</b>				
<b>PS200PC195-114N</b>	200kHz	19.5 (0.75") Tip Length (Total Length 114mm, 4.5") (45deg Crank Shank)	4.45	Absolute
<b>PS200PC195-114F</b>	200kHz	19.5 (0.75") Tip Length (Total Length 114mm, 4.5") (45deg Crank Shank)	3.30 (Fine)	Absolute
<b>PS500PC195-114N</b>	500kHz	19.5 (0.75") Tip Length (Total Length 114mm, 4.5") (45deg Crank Shank)	4.45	Absolute
<b>PS500PC195-114F</b>	500kHz	19.5 (0.75") Tip Length (Total Length 114mm, 4.5") (45deg Crank Shank)	3.30 (Fine)	Absolute
<b>PS002PC195-114N</b>	2MHz	19.5 (0.75") Tip Length (Total Length 114mm, 4.5") (45deg Crank Shank)	3.30	Absolute
<b>PS002PC195-114F</b>	2MHz	19.5 (0.75") Tip Length (Total Length 114mm, 4.5") (45deg Crank Shank)	2.34 (Fine)	Absolute
<b>PS006PC195-114N</b>	6MHz	19.5 (0.75") Tip Length (Total Length 114mm, 4.5") (45deg Crank Shank)	2.34	Absolute

Please see matrix below for other options, specials available on request.

### Other

#### 45deg Crank Probe Example: **PS200PC195-114N**

Centre Frequency	Handle	Tip Type	Tip Length (mm) - Total Length (mm)	Tip Diameter (mm)
<b>PS 200</b>	<b>P</b>	<b>C</b>	<b>195-114</b>	<b>N</b>
<b>200</b> = 200kHz	<b>Plastic</b>	<b>Crank</b>	<b>195-114</b> = Tip Length 19.5mm - Total Length 114mm (4.5")	<b>N</b> = Normal (200kHz = Dia 4.45mm)
<b>500</b> = 500kHz			<b>195-127</b> = Tip Length 19.5mm - Total Length 127mm (5.0")	<b>N</b> = Normal (500kHz = Dia 4.45mm)
<b>002</b> = 2MHz			<b>195-152</b> = Tip Length 19.5mm - Total Length 152mm (6.0")	<b>N</b> = Normal (2MHz = Dia 3.30mm)
<b>006</b> = 6MHz			<b>195-203</b> = Tip Length 19.5mm - Total Length 203mm (8.0")	<b>N</b> = Normal (6MHz = Dia 2.34mm)
			<b>195-254</b> = Tip Length 19.5mm - Total Length 254mm (10.0")	<b>F</b> = Fine (200k = Dia 3.30mm)
			<b>195-305</b> = Tip Length 19.5mm - Total Length 305mm (12.0")	<b>F</b> = Fine (500kHz = Dia 3.30mm)
				<b>F</b> = Fine (2MHz = Dia 2.34mm)

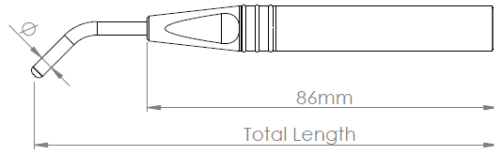
Other variants available on request.

#### Leads to fit above probes:

ETHer NDE Part No.	Description	Instrument	Connector Instrument End	Connector Probe End	Cable Length	Configuration
<b>ALLCX-M02-015A</b>	Lead	WeldCheck/ AeroCheck/ Vantage/ETi	Lemo Coaxial	Micro Plug	1.5m	Absolute
<b>ALL12-M02-015A</b>	Lead	WeldCheck/ AeroCheck/ Vantage/ETi/Hocking	Lemo 12- Way	Micro Plug	1.5m	Absolute
<b>ALL07-M02-015A</b>	Lead	Hocking	Lemo 7- Way	Micro Plug	1.5m	Absolute
<b>ALB02-M02-015A</b>	Lead	Various	BNC Plug	Micro Plug	1.5m	Absolute

## 45deg Crank – Bridge (IB Tech Inside) with plastic handle coding:

Standard



4-Way Lemo Connector



ETHer NDE Part No.	Centre Frequency	Tip Length (Total Length)	ØTip	Type
<b>Probe, Shielded, Plastic Handle, Crank:</b>				
<b>PS200PC195-114NB</b>	200kHz	19.5 (0.75") Tip Length (Total Length 114mm, 4.5") (45deg Crank Shank)	4.45	Bridge
<b>PS200PC195-114FB</b>	200kHz	19.5 (0.75") Tip Length (Total Length 114mm, 4.5") (45deg Crank Shank)	3.30 (Fine)	Bridge
<b>PS500PC195-114NB</b>	500kHz	19.5 (0.75") Tip Length (Total Length 114mm, 4.5") (45deg Crank Shank)	4.45	Bridge
<b>PS500PC195-114FB</b>	500kHz	19.5 (0.75") Tip Length (Total Length 114mm, 4.5") (45deg Crank Shank)	3.30 (Fine)	Bridge
<b>PS002PC195-114NB</b>	2MHz	19.5 (0.75") Tip Length (Total Length 114mm, 4.5") (45deg Crank Shank)	3.30	Bridge
<b>PS002PC195-114FB</b>	2MHz	19.5 (0.75") Tip Length (Total Length 114mm, 4.5") (45deg Crank Shank)	2.34 (Fine)	Bridge
<b>PS006PC195-114NB</b>	6MHz	19.5 (0.75") Tip Length (Total Length 114mm, 4.5") (45deg Crank Shank)	2.34	Bridge
Please see matrix below for other options, specials available on request.				

## Other

45deg Crank Probe Example: **PS200PC195-114NB**

PS	Centre Frequency	Handle	Tip Type	Tip Length (mm) - Total Length (mm)	Tip Diameter (mm)
<b>PS</b>	<b>200</b>	<b>P</b>	<b>C</b>	<b>195-114</b>	<b>NB</b>
	200 = 200kHz	Plastic	Crank	195-114 = Tip Length 19.5mm - Total Length 114mm (4.5")	NB = Normal (200kHz = Dia 4.45mm)
	500 = 500kHz			195-127 = Tip Length 19.5mm - Total Length 127mm (5.0")	NB = Normal (500kHz = Dia 4.45mm)
	002 = 2MHz			195-152 = Tip Length 19.5mm - Total Length 152mm (6.0")	NB = Normal (2MHz = Dia 3.30mm)
	006 = 6MHz			195-203 = Tip Length 19.5mm - Total Length 203mm (8.0")	NB = Normal (6MHz = Dia 2.34mm)
				195-254 = Tip Length 19.5mm - Total Length 254mm (10.0")	FB = Fine (200k = Dia 3.30mm)
				195-305 = Tip Length 19.5mm - Total Length 305mm (12.0")	FB = Fine (500kHz = Dia 3.30mm)
					FB = Fine (2MHz = Dia 2.34mm)

Other variants available on request.

Leads to fit above probes:

ETHer NDE Part No.	Description	Instrument	Connector Instrument End	Connector Probe End	Cable Length	Configuration
<b>ALFTRI-L04-015</b>	Lead	Victor/Veritor	Fischer Triax	Lemo 4-Way Plug	1.5m	Bridge
<b>ALL12-L04-015B</b>	Lead	WeldCheck/ AeroCheck/ Vantage/ETI/Hocking	Lemo 12-Way	Lemo 4-Way Plug	1.5m	Bridge
<b>ALL07-L04-015B</b>	Lead	Hocking	Lemo 7-Way	Lemo 4-Way Plug	1.5m	Bridge

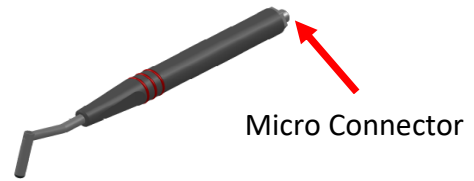
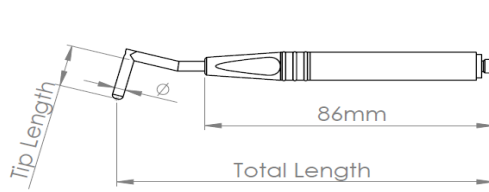
**NDT Supply.com, Inc.**

7952 Nieman Road  
Lenexa, KS 66214-1560 USA

Phone: 913-685-0675, Fax: 913-685-1125  
e-mail: [sales@ndtsupply.com](mailto:sales@ndtsupply.com), [www.ndtsupply.com](http://www.ndtsupply.com)



## 15deg Crank 90deg Tip - Absolute with plastic handle coding:



### Standard

ETHer NDE Part No.	Centre Frequency	Tip Length (Total Length)	ØTip	Type
<b>Probe, Shielded, Plastic Handle, Double crank</b>				
<b>PS200PD050-114N</b>	200kHz	5.0 (MIN) Tip Length (Total Length 114mm, 4.5") (15deg Crank, 90deg tip Shank)	4.45	Absolute
<b>PS200PD027-114F</b>	200kHz	2.7 (MIN) Tip Length (Total Length 114mm, 4.5") (15deg Crank, 90deg tip Shank)	3.30 (Fine)	Absolute
<b>PS500PD050-114N</b>	500kHz	5.0 (MIN) Tip Length (Total Length 114mm, 4.5") (15deg Crank, 90deg tip Shank)	4.45	Absolute
<b>PS500PD027-114F</b>	500kHz	2.7 (MIN) Tip Length (Total Length 114mm, 4.5") (15deg Crank, 90deg tip Shank)	3.30 (Fine)	Absolute
<b>PS002PD027-114N</b>	2MHz	2.7 (MIN) Tip Length (Total Length 114mm, 4.5") (15deg Crank, 90deg tip Shank)	3.30	Absolute
<b>PS002PD017-114F</b>	2MHz	1.7 (MIN) Tip Length (Total Length 114mm, 4.5") (15deg Crank, 90deg tip Shank)	2.34 (Fine)	Absolute
<b>PS006PD017-114N</b>	6MHz	1.7 (MIN) Tip Length (Total Length 114mm, 4.5") (15deg Crank, 90deg tip Shank)	2.34	Absolute

Please see matrix below for other options, specials available on request.

### Other

#### 15deg Crank 90deg Tip Probe Example: **PS200PD050-114N**

PS	Centre Frequency	Handle	Tip Type	Tip Length (mm) - Total Length (mm)	Tip Diameter (mm)
<b>PS</b>	<b>200</b>	<b>P</b>	<b>D</b>	<b>050-114</b>	<b>N</b>
	200 = 200kHz	Plastic	Double	<b>050-114</b> = Tip Length 5mm - Total Length 114mm (4.5")	<b>N</b> = Normal (200kHz = Dia 4.45mm)
	500 = 500kHz		crank	<b>050-127</b> = Tip Length 5mm - Total Length 127mm (5.0")	<b>N</b> = Normal (500kHz = Dia 4.45mm)
				<b>050-152</b> = Tip Length 5mm - Total Length 152mm (6.0")	
				<b>050-203</b> = Tip Length 5mm - Total Length 203mm (8.0")	
				<b>050-254</b> = Tip Length 5mm - Total Length 254mm (10.0")	
				<b>050-305</b> = Tip Length 5mm - Total Length 305mm (12.0")	
				<b>064-114</b> = Tip Length 6.4mm - Total Length 114mm (4.5")	
				<b>064-127</b> = Tip Length 6.4mm - Total Length 127mm (5.0")	
				<b>064-152</b> = Tip Length 6.4mm - Total Length 152mm (6.0")	
				<b>064-203</b> = Tip Length 6.4mm - Total Length 203mm (8.0")	
				<b>064-254</b> = Tip Length 6.4mm - Total Length 254mm (10.0")	
				<b>064-305</b> = Tip Length 6.4mm - Total Length 305mm (12.0")	
				<b>127-114</b> = Tip Length 12.7mm - Total Length 114mm (4.5")	
				<b>127-127</b> = Tip Length 12.7mm - Total Length 127mm (5.0")	
				<b>127-152</b> = Tip Length 12.7mm - Total Length 152mm (6.0")	
				<b>127-203</b> = Tip Length 12.7mm - Total Length 203mm (8.0")	
				<b>127-254</b> = Tip Length 12.7mm - Total Length 254mm (10.0")	
				<b>127-305</b> = Tip Length 12.7mm - Total Length 305mm (12.0")	
				<b>190-114</b> = Tip Length 19.0mm - Total Length 114mm (4.5")	
				<b>190-127</b> = Tip Length 19.0mm - Total Length 127mm (5.0")	



Centre Frequency	Handle	Tip Type	Tip Length (mm) - Total Length (mm)	Tip Diameter (mm)	
200 = 200kHz	Plastic	Double	190-152 = Tip Length 19.0mm - Total Length 152mm (6.0")	N = Normal (200kHz = Dia 4.45mm)	
			500 = 500kHz		190-203 = Tip Length 19.0mm - Total Length 203mm (8.0")
			190-254 = Tip Length 19.0mm - Total Length 254mm (10.0")		
			190-305 = Tip Length 19.0mm - Total Length 305mm (12.0")		
			245-114 = Tip Length 25.4mm - Total Length 114mm (4.5")		
			254-127 = Tip Length 25.4mm - Total Length 127mm (5.0")		
			254-152 = Tip Length 25.4mm - Total Length 152mm (6.0")		
			254-203 = Tip Length 25.4mm - Total Length 203mm (8.0")		
			254-254 = Tip Length 25.4mm - Total Length 254mm (10.0")		
			254-305 = Tip Length 25.4mm - Total Length 305mm (12.0")		
200 = 200kHz	Plastic	Double	027-114 = Tip Length 2.7mm - Total Length 114mm (4.5")	F = Fine (200k = Dia 3.30mm)	
			500 = 500kHz		027-127 = Tip Length 2.7mm - Total Length 127mm (5.0")
			027-152 = Tip Length 2.7mm - Total Length 152mm (6.0")		
			027-203 = Tip Length 2.7mm - Total Length 203mm (8.0")		
			027-254 = Tip Length 2.7mm - Total Length 254mm (10.0")		
			027-305 = Tip Length 2.7mm - Total Length 305mm (12.0")		
			064-114 = Tip Length 6.4mm - Total Length 114mm (4.5")		
			064-127 = Tip Length 6.4mm - Total Length 127mm (5.0")		
			064-152 = Tip Length 6.4mm - Total Length 152mm (6.0")		
			064-203 = Tip Length 6.4mm - Total Length 203mm (8.0")		
064-254 = Tip Length 6.4mm - Total Length 254mm (10.0")					
064-305 = Tip Length 6.4mm - Total Length 305mm (12.0")					
127 = 127kHz	Plastic	Double	127-114 = Tip Length 12.7mm - Total Length 114mm (4.5")	F = Fine (127kHz = Dia 3.30mm)	
			127-127 = Tip Length 12.7mm - Total Length 127mm (5.0")		
			127-152 = Tip Length 12.7mm - Total Length 152mm (6.0")		
			127-203 = Tip Length 12.7mm - Total Length 203mm (8.0")		
			127-254 = Tip Length 12.7mm - Total Length 254mm (10.0")		
			127-305 = Tip Length 12.7mm - Total Length 305mm (12.0")		
			190-114 = Tip Length 19.0mm - Total Length 114mm (4.5")		
			190-127 = Tip Length 19.0mm - Total Length 127mm (5.0")		
			190-152 = Tip Length 19.0mm - Total Length 152mm (6.0")		
			190-203 = Tip Length 19.0mm - Total Length 203mm (8.0")		
190-254 = Tip Length 19.0mm - Total Length 254mm (10.0")					
190-305 = Tip Length 19.0mm - Total Length 305mm (12.0")					
245 = 245kHz	Plastic	Double	245-114 = Tip Length 25.4mm - Total Length 114mm (4.5")	F = Fine (245kHz = Dia 3.30mm)	
			245-127 = Tip Length 25.4mm - Total Length 127mm (5.0")		
			245-152 = Tip Length 25.4mm - Total Length 152mm (6.0")		
			245-203 = Tip Length 25.4mm - Total Length 203mm (8.0")		
			245-254 = Tip Length 25.4mm - Total Length 254mm (10.0")		
			245-305 = Tip Length 25.4mm - Total Length 305mm (12.0")		
			254-114 = Tip Length 25.4mm - Total Length 114mm (4.5")		
			254-127 = Tip Length 25.4mm - Total Length 127mm (5.0")		
			254-152 = Tip Length 25.4mm - Total Length 152mm (6.0")		
			254-203 = Tip Length 25.4mm - Total Length 203mm (8.0")		
254-254 = Tip Length 25.4mm - Total Length 254mm (10.0")					
254-305 = Tip Length 25.4mm - Total Length 305mm (12.0")					
002 = 2MHz	Plastic	Double	027-114 = Tip Length 2.7mm - Total Length 114mm (4.5")	F = Fine (2MHz = Dia 2.34mm)	
			006 = 6MHz		027-127 = Tip Length 2.7mm - Total Length 127mm (5.0")
006 = 6MHz	Plastic	Double	027-152 = Tip Length 2.7mm - Total Length 152mm (6.0")	N = Normal (6MHz = Dia 2.34mm)	
			027-203 = Tip Length 2.7mm - Total Length 203mm (8.0")		
			027-254 = Tip Length 2.7mm - Total Length 254mm (10.0")		
			027-305 = Tip Length 2.7mm - Total Length 305mm (12.0")		



<b>002</b> = 2MHz	<b>Plastic</b>	<b>Double</b>	<b>064-114</b> = Tip Length 6.4mm - Total Length 114mm (4.5")	<b>F</b> = Fine (2MHz = Dia 2.34mm)
<b>006</b> = 6MHz		<b>crank</b>	<b>064-127</b> = Tip Length 6.4mm - Total Length 127mm (5.0")	<b>N</b> = Normal (6MHz = Dia 2.34mm)
			<b>064-152</b> = Tip Length 6.4mm - Total Length 152mm (6.0")	
			<b>064-203</b> = Tip Length 6.4mm - Total Length 203mm (8.0")	
			<b>064-254</b> = Tip Length 6.4mm - Total Length 254mm (10.0")	
			<b>064-305</b> = Tip Length 6.4mm - Total Length 305mm (12.0")	
<hr/>				
			<b>127-114</b> = Tip Length 12.7mm - Total Length 114mm (4.5")	
			<b>127-127</b> = Tip Length 12.7mm - Total Length 127mm (5.0")	
			<b>127-152</b> = Tip Length 12.7mm - Total Length 152mm (6.0")	
			<b>127-203</b> = Tip Length 12.7mm - Total Length 203mm (8.0")	
			<b>127-254</b> = Tip Length 12.7mm - Total Length 254mm (10.0")	
			<b>127-305</b> = Tip Length 12.7mm - Total Length 305mm (12.0")	
<hr/>				
			<b>190-114</b> = Tip Length 19.0mm - Total Length 114mm (4.5")	
			<b>190-127</b> = Tip Length 19.0mm - Total Length 127mm (5.0")	
			<b>190-152</b> = Tip Length 19.0mm - Total Length 152mm (6.0")	
			<b>190-203</b> = Tip Length 19.0mm - Total Length 203mm (8.0")	
			<b>190-254</b> = Tip Length 19.0mm - Total Length 254mm (10.0")	
			<b>190-305</b> = Tip Length 19.0mm - Total Length 305mm (12.0")	
<hr/>				
			<b>245-114</b> = Tip Length 25.4mm - Total Length 114mm (4.5")	
			<b>254-127</b> = Tip Length 25.4mm - Total Length 127mm (5.0")	
			<b>254-152</b> = Tip Length 25.4mm - Total Length 152mm (6.0")	
			<b>254-203</b> = Tip Length 25.4mm - Total Length 203mm (8.0")	
			<b>254-254</b> = Tip Length 25.4mm - Total Length 254mm (10.0")	
			<b>254-305</b> = Tip Length 25.4mm - Total Length 305mm (12.0")	

Other variants available on request.

**Leads to fit above probes:**

ETHer NDE Part No.	Description	Instrument	Connector Instrument End	Connector Probe End	Cable Length	Configuration
<b>ALLCX-M02-015A</b>	Lead	WeldCheck/ AeroCheck/ Vantage/ETi	Lemo Coaxial	Micro Plug	1.5m	Absolute
<b>ALL12-M02-015A</b>	Lead	WeldCheck/ AeroCheck/ Vantage/ETi/Hocking	Lemo 12-Way	Micro Plug	1.5m	Absolute
<b>ALL07-M02-015A</b>	Lead	Hocking	Lemo 7-Way	Micro Plug	1.5m	Absolute
<b>ALB02-M02-015A</b>	Lead	Various	BNC Plug	Micro Plug	1.5m	Absolute

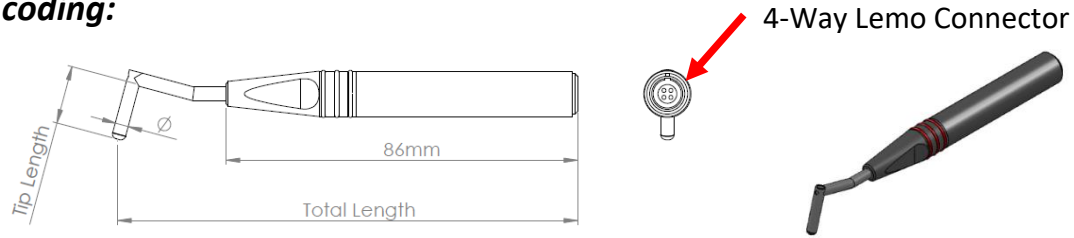
**NDT Supply.com, Inc.**

7952 Nieman Road  
Lenexa, KS 66214-1560 USA

Phone: 913-685-0675, Fax: 913-685-1125  
e-mail: [sales@ndtsupply.com](mailto:sales@ndtsupply.com), [www.ndtsupply.com](http://www.ndtsupply.com)



**15deg Crank 90deg Tip - Bridge (IB Tech Inside) with plastic handle coding:**



**Standard**

ETHer NDE Part No.	Centre Frequency	Tip Length (Total Length)	ØTip	Type
<b>Probe, Shielded, Plastic Handle, Double crank</b>				
<b>PS200PD050-114NB</b>	200kHz	5.0 (MIN) Tip Length (Total Length 114mm, 4.5") (15deg Crank, 90deg tip Shank)	4.45	Bridge
<b>PS200PD027-114FB</b>	200kHz	2.7 (MIN) Tip Length (Total Length 114mm, 4.5") (15deg Crank, 90deg tip Shank)	3.30 (Fine)	Bridge
<b>PS500PD050-114NB</b>	500kHz	5.0 (MIN) Tip Length (Total Length 114mm, 4.5") (15deg Crank, 90deg tip Shank)	4.45	Bridge
<b>PS500PD027-114FB</b>	500kHz	2.7 (MIN) Tip Length (Total Length 114mm, 4.5") (15deg Crank, 90deg tip Shank)	3.30 (Fine)	Bridge
<b>PS002PD027-114NB</b>	2MHz	2.7 (MIN) Tip Length (Total Length 114mm, 4.5") (15deg Crank, 90deg tip Shank)	3.30	Bridge
<b>PS002PD017-114FB</b>	2MHz	1.7 (MIN) Tip Length (Total Length 114mm, 4.5") (15deg Crank, 90deg tip Shank)	2.34 (Fine)	Bridge
<b>PS006PD017-114NB</b>	6MHz	1.7 (MIN) Tip Length (Total Length 114mm, 4.5") (15deg Crank, 90deg tip Shank)	2.34	Bridge

Please see matrix below for other options, specials available on request.

**Other**

**15deg Crank 90deg Tip Probe Example: PS200PD050-114NB**

PS	Centre Frequency	Handle	Tip Type	Tip Length (mm) - Total Length (mm)	Tip Diameter (mm)
<b>PS</b>	<b>200</b>	<b>P</b>	<b>D</b>	<b>050-114</b>	<b>NB</b>
	200 = 200kHz	Plastic	Double	050-114 = Tip Length 5mm - Total Length 114mm (4.5")	NB = Normal (200kHz = Dia 4.45mm)
	500 = 500kHz		crank	050-127 = Tip Length 5mm - Total Length 127mm (5.0")	NB = Normal (500kHz = Dia 4.45mm)
				050-152 = Tip Length 5mm - Total Length 152mm (6.0")	
				050-203 = Tip Length 5mm - Total Length 203mm (8.0")	
				050-254 = Tip Length 5mm - Total Length 254mm (10.0")	
				050-305 = Tip Length 5mm - Total Length 305mm (12.0")	
				064-114 = Tip Length 6.4mm - Total Length 114mm (4.5")	
				064-127 = Tip Length 6.4mm - Total Length 127mm (5.0")	
				064-152 = Tip Length 6.4mm - Total Length 152mm (6.0")	
				064-203 = Tip Length 6.4mm - Total Length 203mm (8.0")	
				064-254 = Tip Length 6.4mm - Total Length 254mm (10.0")	
				064-305 = Tip Length 6.4mm - Total Length 305mm (12.0")	
				127-114 = Tip Length 12.7mm - Total Length 114mm (4.5")	
				127-127 = Tip Length 12.7mm - Total Length 127mm (5.0")	
				127-152 = Tip Length 12.7mm - Total Length 152mm (6.0")	
				127-203 = Tip Length 12.7mm - Total Length 203mm (8.0")	
				127-254 = Tip Length 12.7mm - Total Length 254mm (10.0")	
				127-305 = Tip Length 12.7mm - Total Length 305mm (12.0")	
				190-114 = Tip Length 19.0mm - Total Length 114mm (4.5")	
				190-127 = Tip Length 19.0mm - Total Length 127mm (5.0")	



7952 Nieman Road, Lenexa, KS 66214-1560 USA  
 Phone: 913-685-0675, Fax: 913-685-1125  
[www.ndtsupply.com](http://www.ndtsupply.com), [sales@ndtsupply.com](mailto:sales@ndtsupply.com)

Centre Frequency	Handle	Tip Type	Tip Length (mm) - Total Length (mm)	Tip Diameter (mm)
<b>200</b> = 200kHz	<b>Plastic</b>	<b>Double</b>	<b>190-152</b> = Tip Length 19.0mm - Total Length 152mm (6.0")	<b>NB</b> = Normal (200kHz = Dia 4.45mm)
			<b>500</b> = 500kHz	
			<b>190-203</b> = Tip Length 19.0mm - Total Length 203mm (8.0")	
			<b>190-254</b> = Tip Length 19.0mm - Total Length 254mm (10.0")	
			<b>190-305</b> = Tip Length 19.0mm - Total Length 305mm (12.0")	
			<b>245-114</b> = Tip Length 25.4mm - Total Length 114mm (4.5")	
			<b>254-127</b> = Tip Length 25.4mm - Total Length 127mm (5.0")	
			<b>254-152</b> = Tip Length 25.4mm - Total Length 152mm (6.0")	
			<b>254-203</b> = Tip Length 25.4mm - Total Length 203mm (8.0")	
			<b>254-254</b> = Tip Length 25.4mm - Total Length 254mm (10.0")	
<b>254-305</b> = Tip Length 25.4mm - Total Length 305mm (12.0")				
<b>200</b> = 200kHz	<b>Plastic</b>	<b>Double</b>	<b>027-114</b> = Tip Length 2.7mm - Total Length 114mm (4.5")	<b>FB</b> = Fine (200k = Dia 3.30mm)
			<b>500</b> = 500kHz	
			<b>027-127</b> = Tip Length 2.7mm - Total Length 127mm (5.0")	
			<b>027-152</b> = Tip Length 2.7mm - Total Length 152mm (6.0")	
			<b>027-203</b> = Tip Length 2.7mm - Total Length 203mm (8.0")	
			<b>027-254</b> = Tip Length 2.7mm - Total Length 254mm (10.0")	
			<b>027-305</b> = Tip Length 2.7mm - Total Length 305mm (12.0")	
			<b>064-114</b> = Tip Length 6.4mm - Total Length 114mm (4.5")	
			<b>064-127</b> = Tip Length 6.4mm - Total Length 127mm (5.0")	
			<b>064-152</b> = Tip Length 6.4mm - Total Length 152mm (6.0")	
<b>064-203</b> = Tip Length 6.4mm - Total Length 203mm (8.0")				
<b>064-254</b> = Tip Length 6.4mm - Total Length 254mm (10.0")				
<b>064-305</b> = Tip Length 6.4mm - Total Length 305mm (12.0")				
<b>127</b> = 127kHz	<b>Plastic</b>	<b>Double</b>	<b>127-114</b> = Tip Length 12.7mm - Total Length 114mm (4.5")	<b>NB</b> = Normal (127kHz = Dia 3.30mm)
			<b>127-127</b> = Tip Length 12.7mm - Total Length 127mm (5.0")	
			<b>127-152</b> = Tip Length 12.7mm - Total Length 152mm (6.0")	
			<b>127-203</b> = Tip Length 12.7mm - Total Length 203mm (8.0")	
			<b>127-254</b> = Tip Length 12.7mm - Total Length 254mm (10.0")	
			<b>127-305</b> = Tip Length 12.7mm - Total Length 305mm (12.0")	
			<b>190-114</b> = Tip Length 19.0mm - Total Length 114mm (4.5")	
			<b>190-127</b> = Tip Length 19.0mm - Total Length 127mm (5.0")	
			<b>190-152</b> = Tip Length 19.0mm - Total Length 152mm (6.0")	
			<b>190-203</b> = Tip Length 19.0mm - Total Length 203mm (8.0")	
<b>190-254</b> = Tip Length 19.0mm - Total Length 254mm (10.0")				
<b>190-305</b> = Tip Length 19.0mm - Total Length 305mm (12.0")				
<b>245</b> = 245kHz	<b>Plastic</b>	<b>Double</b>	<b>245-114</b> = Tip Length 25.4mm - Total Length 114mm (4.5")	<b>NB</b> = Normal (245kHz = Dia 4.45mm)
			<b>254-127</b> = Tip Length 25.4mm - Total Length 127mm (5.0")	
			<b>254-152</b> = Tip Length 25.4mm - Total Length 152mm (6.0")	
			<b>254-203</b> = Tip Length 25.4mm - Total Length 203mm (8.0")	
			<b>254-254</b> = Tip Length 25.4mm - Total Length 254mm (10.0")	
			<b>254-305</b> = Tip Length 25.4mm - Total Length 305mm (12.0")	
			<b>002</b> = 2MHz	
			<b>002-114</b> = Tip Length 2.7mm - Total Length 114mm (4.5")	
			<b>002-127</b> = Tip Length 2.7mm - Total Length 127mm (5.0")	
			<b>002-152</b> = Tip Length 2.7mm - Total Length 152mm (6.0")	
<b>002-203</b> = Tip Length 2.7mm - Total Length 203mm (8.0")				
<b>002-254</b> = Tip Length 2.7mm - Total Length 254mm (10.0")				
<b>006</b> = 6MHz				
<b>006-114</b> = Tip Length 2.7mm - Total Length 114mm (4.5")				
<b>006-127</b> = Tip Length 2.7mm - Total Length 127mm (5.0")				
<b>006-152</b> = Tip Length 2.7mm - Total Length 152mm (6.0")				
<b>006-203</b> = Tip Length 2.7mm - Total Length 203mm (8.0")				
<b>006-254</b> = Tip Length 2.7mm - Total Length 254mm (10.0")				



**002** = 2MHz      **Plastic**      **Double**  
**006** = 6MHz                      crank

**027-305** = Tip Length 2.7mm - Total Length 305mm (12.0")  
**064-114** = Tip Length 6.4mm - Total Length 114mm (4.5")      **FB** = Fine (2MHz = Dia 2.34mm)  
**064-127** = Tip Length 6.4mm - Total Length 127mm (5.0")      **NB** = Normal (6MHz = Dia 2.34mm)  
**064-152** = Tip Length 6.4mm - Total Length 152mm (6.0")  
**064-203** = Tip Length 6.4mm - Total Length 203mm (8.0")  
**064-254** = Tip Length 6.4mm - Total Length 254mm (10.0")  
**064-305** = Tip Length 6.4mm - Total Length 305mm (12.0")

---

**127-114** = Tip Length 12.7mm - Total Length 114mm (4.5")  
**127-127** = Tip Length 12.7mm - Total Length 127mm (5.0")  
**127-152** = Tip Length 12.7mm - Total Length 152mm (6.0")  
**127-203** = Tip Length 12.7mm - Total Length 203mm (8.0")  
**127-254** = Tip Length 12.7mm - Total Length 254mm (10.0")  
**127-305** = Tip Length 12.7mm - Total Length 305mm (12.0")

---

**190-114** = Tip Length 19.0mm - Total Length 114mm (4.5")  
**190-127** = Tip Length 19.0mm - Total Length 127mm (5.0")  
**190-152** = Tip Length 19.0mm - Total Length 152mm (6.0")  
**190-203** = Tip Length 19.0mm - Total Length 203mm (8.0")  
**190-254** = Tip Length 19.0mm - Total Length 254mm (10.0")  
**190-305** = Tip Length 19.0mm - Total Length 305mm (12.0")

---

**245-114** = Tip Length 25.4mm - Total Length 114mm (4.5")  
**254-127** = Tip Length 25.4mm - Total Length 127mm (5.0")  
**254-152** = Tip Length 25.4mm - Total Length 152mm (6.0")  
**254-203** = Tip Length 25.4mm - Total Length 203mm (8.0")  
**254-254** = Tip Length 25.4mm - Total Length 254mm (10.0")  
**254-305** = Tip Length 25.4mm - Total Length 305mm (12.0")

Other variants available on request.

**Leads to fit above probes:**

ETHer NDE Part No.	Description	Instrument	Connector Instrument End	Connector Probe End	Cable Length	Configuration
<b>ALFTRI-L04-015</b>	Lead	Victor/Veritor	Fischer Triax	Lemo 4-Way Plug	1.5m	Bridge
<b>ALL12-L04-015B</b>	Lead	WeldCheck/ AeroCheck/ Vantage/ETi/Hocking	Lemo 12-Way	Lemo 4-Way Plug	1.5m	Bridge
<b>ALL07-L04-015B</b>	Lead	Hocking	Lemo 7-Way	Lemo 4-Way Plug	1.5m	Bridge

**NDT Supply.com, Inc.**

7952 Nieman Road  
Lenexa, KS 66214-1560 USA

Phone: 913-685-0675, Fax: 913-685-1125  
e-mail: [sales@ndtsupply.com](mailto:sales@ndtsupply.com), [www.ndtsupply.com](http://www.ndtsupply.com)

