

Rotating Probes - Reflection

Rigid Stainless Steel



Delrin Flexible



Application:

Differential Rotating Probes - for internal diameter inspection of bore holes, countersinks and counter bores.

Specification:

- Probe diameters from 1.6 to 50mm, available in 0.01mm steps
- Fischer connector to ETher Small and Large drive also compatible with Hocking, GE, Rohmann and Forster drive units.
- Frequency range from 200kHz to 2MHz
- Comes in rigid stainless steel and delrin flexible options

Notes:

When ordering rotating probes 0.1mm is automatically taken off probe diameter during manufacture, this should be good for typical hole condition and manufacturing tolerances. Where tolerances are poor allow for greater clearance.

Example: To inspect a $\varnothing 12.7$ (1/2") hole a $\varnothing 12.7$ probe should be ordered which will be manufactured to a $\varnothing 12.6$.

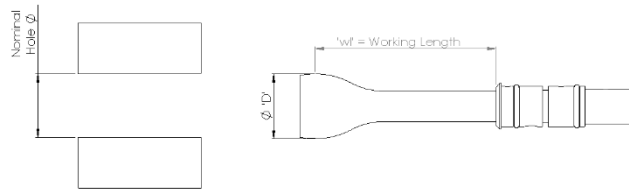
NDT Supply.com, Inc.

7952 Nieman Road
Lenexa, KS 66214-1560 USA

Phone: 913-685-0675, Fax: 913-685-1125
e-mail: sales@ndtsupply.com, www.ndtsupply.com



Rigid Stainless Steel Coding



ETHer NDE Part No.	Description	Nominal Hole Dia "	Nominal Hole Dia mm	'wl' - Working Length mm
Imperial Examples:				
PRR0159-035	Probe. Rotating, Rigid, Dia = 1.59mm (1/16"), wl = 35mm	1/16"	1.59	35.0
PRR0198-035	Probe. Rotating, Rigid, Dia = 1.98mm (5/64"), wl = 35mm	5/64"	1.98	35.0
PRR0238-035	Probe. Rotating, Rigid, Dia = 2.38mm (3/32"), wl = 35mm	3/32"	2.38	35.0
PRR0278-035	Probe. Rotating, Rigid, Dia = 2.78mm (7/64"), wl = 35mm	7/64"	2.87	35.0
PRR0318-035	Probe. Rotating, Rigid, Dia = 3.18mm (1/8"), wl = 35mm	1/8"	3.18	35.0
PRR0357-035	Probe. Rotating, Rigid, Dia = 3.57mm (9/64"), wl = 35mm	9/64"	3.57	35.0
PRR0397-035	Probe. Rotating, Rigid, Dia = 3.97mm (5/32"), wl = 35mm	5/32"	3.97	35.0
PRR0437-035	Probe. Rotating, Rigid, Dia = 4.37mm (11/64"), wl = 35mm	11/64"	4.37	35.0
PRR0476-035	Probe. Rotating, Rigid, Dia = 4.76mm (3/16"), wl = 35mm	3/16"	4.76	35.0
PRR0516-035	Probe. Rotating, Rigid, Dia = 5.16mm (13/64"), wl = 35mm	13/64"	5.16	35.0
PRR0556-035	Probe. Rotating, Rigid, Dia = 5.56mm (7/32"), wl = 35mm	7/32"	5.56	35.0
PRR0595-035	Probe. Rotating, Rigid, Dia = 5.95mm (15/64"), wl = 35mm	15/64"	5.95	35.0
PRR0635-035	Probe. Rotating, Rigid, Dia = 6.35mm (1/4"), wl = 35mm	1/4"	6.35	35.0
PRR0675-035	Probe. Rotating, Rigid, Dia = 6.75mm (17/64"), wl = 35mm	17/64"	6.75	35.0
PRR0714-035	Probe. Rotating, Rigid, Dia = 7.14mm (9/32"), wl = 35mm	9/32"	7.14	35.0
PRR0754-035	Probe. Rotating, Rigid, Dia = 7.54mm (19/64"), wl = 35mm	19/64"	7.54	35.0
PRR0794-035	Probe. Rotating, Rigid, Dia = 7.94mm (5/16"), wl = 35mm	5/16"	7.94	35.0
PRR0833-035	Probe. Rotating, Rigid, Dia = 8.33mm (13/64"), wl = 35mm	13/64"	8.33	35.0
PRR0873-035	Probe. Rotating, Rigid, Dia = 8.73mm (11/32"), wl = 35mm	11/32"	8.73	35.0
PRR0913-035	Probe. Rotating, Rigid, Dia = 9.13mm (23/64"), wl = 35mm	23/64"	9.13	35.0
PRR0953-035	Probe. Rotating, Rigid, Dia = 9.53mm (3/8"), wl = 35mm	3/8"	9.53	35.0
PRR0992-035	Probe. Rotating, Rigid, Dia = 9.92mm (25/64"), wl = 35mm	25/64"	9.92	35.0
PRR1032-035	Probe. Rotating, Rigid, Dia = 10.32mm (13/32"), wl = 35mm	13/32"	10.32	35.0
PRR1072-035	Probe. Rotating, Rigid, Dia = 10.72mm (27/64"), wl = 35mm	27/64"	10.72	35.0
PRR1111-035	Probe. Rotating, Rigid, Dia = 11.11mm (7/16"), wl = 35mm	7/16"	11.11	35.0
PRR1151-035	Probe. Rotating, Rigid, Dia = 11.51mm (29/64"), wl = 35mm	29/64"	11.51	35.0
PRR1191-035	Probe. Rotating, Rigid, Dia = 11.91mm (15/32"), wl = 35mm	15/32"	11.91	35.0
PRR1230-035	Probe. Rotating, Rigid, Dia = 12.30mm (31/64"), wl = 35mm	31/64"	12.30	35.0
PRR1270-035	Probe. Rotating, Rigid, Dia = 12.70mm (1/2") wl = 35mm	1/2"	12.70	35.0
PRR1310-065	Probe. Rotating, Rigid, Dia = 13.10mm (33/64") wl = 65mm	33/64"	13.10	65.0
PRR1350-065	Probe. Rotating, Rigid, Dia = 13.50mm (17/32") wl = 65mm	17/32"	13.50	65.0
PRR1390-065	Probe. Rotating, Rigid, Dia = 13.90mm (35/64") wl = 65mm	35/64"	13.9	65.0
PRR1430-065	Probe. Rotating, Rigid, Dia = 14.30mm (9/16") wl = 65mm	9/16"	14.3	65.0
PRR1470-065	Probe. Rotating, Rigid, Dia = 14.70mm (37/64") wl = 65mm	37/64"	14.7	65.0
PRR1510-065	Probe. Rotating, Rigid, Dia = 15.10mm (19/32") wl = 65mm	19/32"	15.1	65.0
PRR1550-065	Probe. Rotating, Rigid, Dia = 15.50mm (39/64") wl = 65mm	39/64"	15.5	65.0
PRR1590-065	Probe. Rotating, Rigid, Dia = 15.90mm (5/8") wl = 65mm	5/8"	15.9	65.0
PRR1630-065	Probe. Rotating, Rigid, Dia = 16.30mm (41/64") wl = 65mm	41/64"	16.3	65.0
PRR1670-065	Probe. Rotating, Rigid, Dia = 16.70mm (21/32") wl = 65mm	21/32"	16.7	65.0
PRR1710-065	Probe. Rotating, Rigid, Dia = 17.10mm (43/64") wl = 65mm	43/64"	17.1	65.0
PRR1750-065	Probe. Rotating, Rigid, Dia = 17.50mm (11/16") wl = 65mm	11/16"	17.5	65.0

NDT Supply.com, Inc.
7952 Nieman Road
Lenexa, KS 66214-1560 USA

Phone: 913-685-0675, Fax: 913-685-1125
e-mail: sales@ndtsupply.com, www.ndtsupply.com



ETHer NDE Part No.	Description	Nominal Hole Dia "	Nominal Hole Dia mm	'wl' - Working Length mm
PRR1790-065	Probe. Rotating, Rigid, Dia = 17.90mm (45/64") wl = 65mm	45/64"	17.9	65.0
PRR1830-065	Probe. Rotating, Rigid, Dia = 18.30mm (23/32") wl = 65mm	23/32"	18.3	65.0
PRR1870-065	Probe. Rotating, Rigid, Dia = 18.70mm (47/64") wl = 65mm	47/64"	18.7	65.0
PRR1910-065	Probe. Rotating, Rigid, Dia = 19.10mm (3/4") wl = 65mm	3/4"	19.1	65.0
PRR1950-065	Probe. Rotating, Rigid, Dia = 19.50mm (49/64") wl = 65mm	49/64"	19.5	65.0
PRR1980-065	Probe. Rotating, Rigid, Dia = 19.80mm (25/32") wl = 65mm	25/32"	19.8	65.0
PRR2020-065	Probe. Rotating, Rigid, Dia = 20.20mm (51/64") wl = 65mm	51/64"	20.2	65.0
PRR2060-065	Probe. Rotating, Rigid, Dia = 20.60mm (13/16") wl = 65mm	13/16"	20.6	65.0
PRR2100-065	Probe. Rotating, Rigid, Dia = 21.00mm (53/64") wl = 65mm	53/64"	21.0	65.0
PRR2140-065	Probe. Rotating, Rigid, Dia = 20.20mm (27/32") wl = 65mm	27/32"	21.4	65.0
PRR2180-065	Probe. Rotating, Rigid, Dia = 20.20mm (55/64") wl = 65mm	55/64"	21.8	65.0
PRR2220-065	Probe. Rotating, Rigid, Dia = 20.20mm (7/8") wl = 65mm	7/8"	22.2	65.0
PRR2260-065	Probe. Rotating, Rigid, Dia = 20.20mm (57/64") wl = 65mm	57/64"	22.6	65.0
PRR2300-065	Probe. Rotating, Rigid, Dia = 20.20mm (29/32") wl = 65mm	29/32"	23.0	65.0
PRR2340-065	Probe. Rotating, Rigid, Dia = 20.20mm (59/64") wl = 65mm	59/64"	23.4	65.0
PRR2380-065	Probe. Rotating, Rigid, Dia = 20.20mm (15/16") wl = 65mm	15/16"	23.8	65.0
PRR2420-065	Probe. Rotating, Rigid, Dia = 20.20mm (61/64") wl = 65mm	61/64"	24.2	65.0
PRR2460-065	Probe. Rotating, Rigid, Dia = 20.20mm (31/32") wl = 65mm	31/32"	24.6	65.0
PRR2500-065	Probe. Rotating, Rigid, Dia = 20.20mm (63/64") wl = 65mm	63/64"	25.0	65.0
PRR2540-065	Probe. Rotating, Rigid, Dia = 20.20mm (1.0") wl = 65mm	1.0	25.4	65.0
Metric Examples:				
PRR0300-035	Probe. Rotating, Rigid, Dia = 3.00mm, wl = 35mm		3.00	35.0
PRR0400-035	Probe. Rotating, Rigid, Dia = 4.00mm, wl = 35mm		4.00	35.0
PRR0500-035	Probe. Rotating, Rigid, Dia = 5.00mm, wl = 35mm		5.00	35.0
PRR0600-035	Probe. Rotating, Rigid, Dia = 6.00mm, wl = 35mm		6.00	35.0
PRR0700-035	Probe. Rotating, Rigid, Dia = 7.00mm, wl = 35mm		7.00	35.0
PRR0800-035	Probe. Rotating, Rigid, Dia = 8.00mm, wl = 35mm		8.00	35.0
PRR0900-035	Probe. Rotating, Rigid, Dia = 9.00mm, wl = 35mm		9.00	35.0
PRR1000-035	Probe. Rotating, Rigid, Dia = 10.00mm, wl = 35mm		10.00	35.0
PRR1100-035	Probe. Rotating, Rigid, Dia = 11.00mm, wl = 35mm		11.00	35.0
PRR1200-035	Probe. Rotating, Rigid, Dia = 12.00mm, wl = 35mm		12.00	35.0
PRR1300-065	Probe. Rotating, Rigid, Dia = 13.00mm, wl = 65mm		13.00	65.0
PRR1400-065	Probe. Rotating, Rigid, Dia = 14.00mm, wl = 65mm		14.00	65.0
PRR1500-065	Probe. Rotating, Rigid, Dia = 15.00mm, wl = 65mm		15.00	65.0
PRR1600-065	Probe. Rotating, Rigid, Dia = 16.00mm, wl = 65mm		16.00	65.0
PRR1700-065	Probe. Rotating, Rigid, Dia = 17.00mm, wl = 65mm		17.00	65.0
PRR1800-065	Probe. Rotating, Rigid, Dia = 18.00mm, wl = 65mm		18.00	65.0
PRR1900-065	Probe. Rotating, Rigid, Dia = 19.00mm, wl = 65mm		19.00	65.0
PRR2000-065	Probe. Rotating, Rigid, Dia = 20.00mm, wl = 65mm		20.00	65.0
PRR2100-065	Probe. Rotating, Rigid, Dia = 21.00mm, wl = 65mm		21.00	65.0
PRR2200-065	Probe. Rotating, Rigid, Dia = 22.00mm, wl = 65mm		22.00	65.0
PRR2300-065	Probe. Rotating, Rigid, Dia = 23.00mm, wl = 65mm		23.00	65.0
PRR2400-065	Probe. Rotating, Rigid, Dia = 24.00mm, wl = 65mm		24.00	65.0
PRR2500-065	Probe. Rotating, Rigid, Dia = 25.00mm, wl = 65mm		25.00	65.0
Other options available on request.				

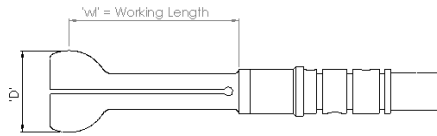
NDT Supply.com, Inc.

7952 Nieman Road
Lenexa, KS 66214-1560 USA

Phone: 913-685-0675, Fax: 913-685-1125
e-mail: sales@ndtsupply.com, www.ndtsupply.com



Delrin Flexible Coding



ETHer NDE Part No.	Description	Hole Dia Range mm	Nominal Diameter	'wl' - Working Length mm
Examples:				
PRF040-050051	Probe. Rotating, Flexible, Dia = 4.0 – 5.0mm, wl = 51.00mm	4.0-5.0	3/16" (4.76mm)	51
PRF050-060051	Probe. Rotating, Flexible, Dia = 5.0 – 6.0mm, wl = 51.00mm	5.0-6.0	7/32" (5.56mm)	51
PRF060-070051	Probe. Rotating, Flexible, Dia = 6.0 – 7.0mm wl = 51.00mm	6.0-7.0	1/4" (6.35mm)	51
PRF070-080051	Probe. Rotating, Flexible, Dia = 7.0 – 8.0mm wl = 51.00mm	7.0-8.0	5/16" (7.94mm)	51
PRF080-090051	Probe. Rotating, Flexible, Dia = 8.0 – 9.0mm wl = 51.00mm	8.0-9.0	21/64" (8.33mm)	51
PRF090-100051	Probe. Rotating, Flexible, Dia = 9.0 – 10.0mm wl = 51.00mm	9.0-10.00	3/8" (9.53mm)	51
PRF100-110051	Probe. Rotating, Flexible, Dia = 10.0 – 11.0mm wl = 51.00mm	10.0-11.00	13/32" (10.32mm)	51
PRF110-120051	Probe. Rotating, Flexible, Dia = 11.0 – 12.0mm wl = 51.00mm	11.0-12.00	7/16" (11.11mm)	51
PRF120-130051	Probe. Rotating, Flexible, Dia = 12.0 – 13.0mm wl = 51.00mm	12.00-13.00	1/2" (12.70mm)	51
PRF130-150051	Probe. Rotating, Flexible, Dia = 13.0 – 15.0mm wl = 51.00mm	13.00 - 15.00	9/16" (14.30mm)	51
PRF150-170051	Probe. Rotating, Flexible, Dia = 15.0 – 17.0mm wl = 51.00mm	15.00 - 17.00	5/8" (15.90mm)	51
PRF170-190051	Probe. Rotating, Flexible, Dia = 17.0 – 19.0mm wl = 51.00mm	17.00 - 19.00	11/16" (17.50mm)	51
PRF190-210051	Probe. Rotating, Flexible, Dia = 19.0 – 21.0mm wl = 51.00mm	19.00 - 21.00	3/4" (19.10mm)	51
PRF210-230051	Probe. Rotating, Flexible, Dia = 21.0 – 23.0mm wl = 51.00mm	21.00 - 23.00	7/8" (22.00mm)	51
PRF230-250051	Probe. Rotating, Flexible, Dia = 23.0 – 25.0mm wl = 51.00mm	23.00 - 25.00	15/16" (23.80mm)	51
PRF250-270051	Probe. Rotating, Flexible, Dia = 25.0 – 27.0mm wl = 51.00mm	25.00 - 27.00	1" (25.40mm)	51
PRF270-290051	Probe. Rotating, Flexible, Dia = 27.0 – 29.0mm wl = 51.00mm	27.00 - 29.00	1 1/8" (28.57mm)	51
PRF290-310051	Probe. Rotating, Flexible, Dia = 29.0 – 31.0mm wl = 51.00mm	29.00 - 31.00	1 3/16" (30.17mm)	51
PRF310-330051	Probe. Rotating, Flexible, Dia = 31.0 – 33.0mm wl = 51.00mm	31.00 - 33.00	1 1/4" (31.75mm)	51
PRF330-350051	Probe. Rotating, Flexible, Dia = 33.0 – 35.0mm wl = 51.00mm	33.00 - 35.00	1 3/8" (34.93mm)	51
PRF350-370051	Probe. Rotating, Flexible, Dia = 35.0 – 37.0mm wl = 51.00mm	35.00 - 37.00	1 7/16" (36.51mm)	51
PRF370-390051	Probe. Rotating, Flexible, Dia = 37.0 – 39.0mm wl = 51.00mm	37.00 - 39.00	1 1/2" (38.10mm)	51
Other options available on request.				

NDT Supply.com, Inc.
7952 Nieman Road
Lenexa, KS 66214-1560 USA

Phone: 913-685-0675, Fax: 913-685-1125
e-mail: sales@ndtsupply.com, www.ndtsupply.com

