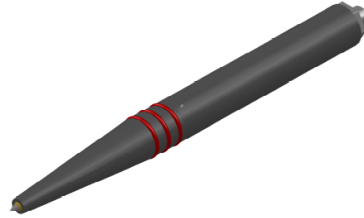
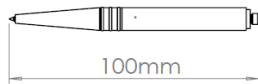


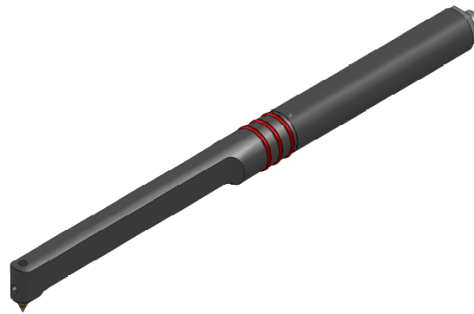
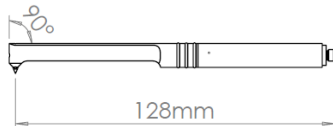
Thread Inspection Probes (Unshielded) - Absolute

Pencil Type

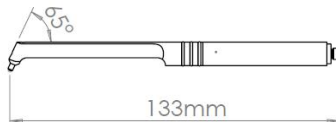
Straight - External Threads (Bolts):



90deg Crank - External and Internal Threads (Bolts and Nuts):



65deg Crank – Internal Thread (Nuts):



Application:

Unshielded Absolute thread inspection probes – for crack detection in external and internal threads.

Specification:

- Micro connector
- Centre frequency range - 200kHz 500kHz, 2MHz
- Operating range – 200kHz (50kHz – 600kHz), 500kHz (150kHz – 1.5MHz), 2MHz – (650kHz – 6MHz)
- Used on Fe & NFe applications
- Disconnectable

NDT Supply.com, Inc.

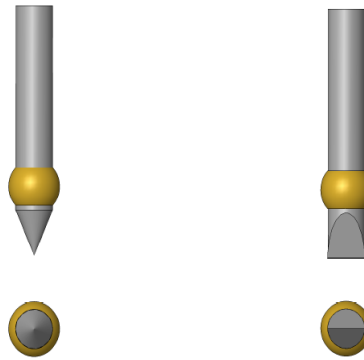
7952 Nieman Road
Lenexa, KS 66214-1560 USA

Phone: 913-685-0675, Fax: 913-685-1125
e-mail: sales@ndtsupply.com, www.ndtsupply.com



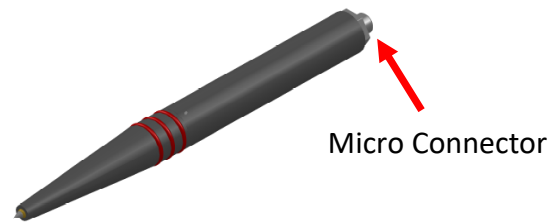
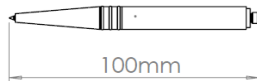
Notes:

This range of probes comes with either a pointed or chiselled tip.



Probe Coding:

Straight - External Threads (Bolts)



ETHer NDE Part No.	Description	Centre Frequency	Tip Shape
Probe, Thread, External (Straight), Pointed/Chiselled			
PTE200PNFE	Probe, Thread, External, 200kHz, Pointed, NFE, Unshielded.	200kHz	Pointed
PTE200PFE	Probe, Thread, External, 200kHz, Pointed, FE, Unshielded.	200kHz	Pointed
PTE200CNFE	Probe, Thread, External, 200kHz, Chisel, NFE, Unshielded.	200kHz	Chisel
PTE200CFE	Probe, Thread, External, 200kHz, Chisel, FE, Unshielded.	200kHz	Chisel
PTE500PNFE	Probe, Thread, External, 500kHz, Pointed, NFE, Unshielded.	500kHz	Pointed
PTE500PFE	Probe, Thread, External, 500kHz, Pointed, FE, Unshielded.	500kHz	Pointed
PTE500CNFE	Probe, Thread, External, 500kHz, Chisel, NFE, Unshielded.	500kHz	Chisel
PTE500CFE	Probe, Thread, External, 500kHz, Chisel, FE, Unshielded.	500kHz	Chisel
PTE002PNFE	Probe, Thread, External, 2MHz, Pointed, NFE, Unshielded.	2MHz	Pointed
PTE002PFE	Probe, Thread, External, 2MHz, Pointed, FE, Unshielded.	2MHz	Pointed
PTE002CNFE	Probe, Thread, External, 2MHz, Chisel, NFE, Unshielded.	2MHz	Chisel
PTE002CFE	Probe, Thread, External, 2MHz, Chisel, FE, Unshielded.	2MHz	Chisel
Other options available on request.			

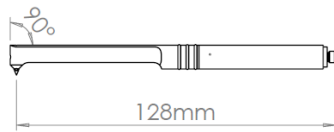
NDT Supply.com, Inc.

7952 Nieman Road
Lenexa, KS 66214-1560 USA

Phone: 913-685-0675, Fax: 913-685-1125
e-mail: sales@ndtsupply.com, www.ndtsupply.com

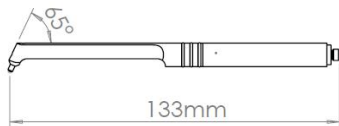


90deg Crank - External and Internal Threads (Bolts and Nuts)



ETHer NDE Part No.	Description	Centre Frequency	Tip Shape
Probe, Thread, Right Angled, Pointed/Chiselled			
PTR200PNFE	Probe, Thread, 90 deg, 200kHz, Pointed, NFE, Unshielded.	200kHz	Pointed
PTR200PFE	Probe, Thread, 90 deg, 200kHz, Pointed, FE, Unshielded.	200kHz	Pointed
PTR200CNFE	Probe, Thread, 90 deg, 200kHz, Chisel, NFE, Unshielded.	200kHz	Chisel
PTR200CFE	Probe, Thread, 90 deg, 200kHz, Chisel, FE, Unshielded.	200kHz	Chisel
PTR500PNFE	Probe, Thread, 90 deg, 500kHz, Pointed, NFE, Unshielded.	500kHz	Pointed
PTR500PFE	Probe, Thread, 90 deg, 500kHz, Pointed, FE, Unshielded.	500kHz	Pointed
PTR500CNFE	Probe, Thread, 90 deg, 500kHz, Chisel, NFE, Unshielded.	500kHz	Chisel
PTR500CFE	Probe, Thread, 90 deg, 500kHz, Chisel, FE, Unshielded.	500kHz	Chisel
PTR002PNFE	Probe, Thread, 90 deg, 2MHz, Pointed, NFE, Unshielded.	2MHz	Pointed
PTR002PFE	Probe, Thread, 90 deg, 2MHz, Pointed, FE, Unshielded.	2MHz	Pointed
PTR002CNFE	Probe, Thread, 90 deg, 2MHz, Chisel, NFE, Unshielded.	2MHz	Chisel
PTR002CFE	Probe, Thread, 90 deg, 2MHz, Chisel, FE, Unshielded.	2MHz	Chisel
Other options available on request.			

65deg Crank – Internal Thread (Nuts)



ETHer NDE Part No.	Description	Centre Frequency	Tip Shape
Probe, Thread, Internal 65 deg, Pointed/Chiselled			
PTI200PNFE	Probe, Thread, Internal 65deg, 200kHz, Pointed, NFE, Unshielded.	200kHz	Pointed
PTI200PFE	Probe, Thread, Internal 65deg, 200kHz, Pointed, FE, Unshielded.	200kHz	Pointed
PTI200CNFE	Probe, Thread, Internal 65deg, 200kHz, Chisel, NFE, Unshielded.	200kHz	Chisel
PTI200CFE	Probe, Thread, Internal 65deg, 200kHz, Chisel, FE, Unshielded.	200kHz	Chisel
PTI500PNFE	Probe, Thread, Internal 65deg, 200kHz, Pointed, NFE, Unshielded.	500kHz	Pointed
PTI500PFE	Probe, Thread, Internal 65deg, 500kHz, Pointed, FE, Unshielded.	500kHz	Pointed
PTI500CNFE	Probe, Thread, Internal 65deg, 500kHz, Chisel, NFE, Unshielded.	500kHz	Chisel

NDT Supply.com, Inc.
7952 Nieman Road
Lenexa, KS 66214-1560 USA

Phone: 913-685-0675, Fax: 913-685-1125
e-mail: sales@ndtsupply.com, www.ndtsupply.com



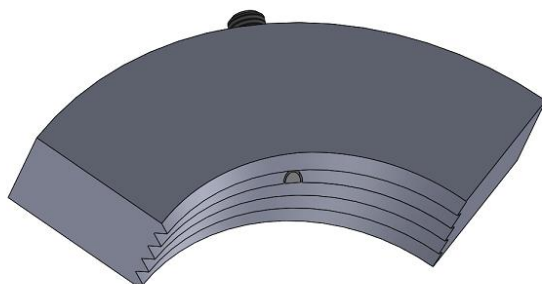
PTI500CFE	Probe, Thread, Internal 65deg, 500kHz, Chisel, FE, Unshielded.	500kHz	Chisel
PTI002PNFE	Probe, Thread, Internal 65deg, 2MHz, Pointed, NFE, Unshielded.	2MHz	Pointed
PTI002PFE	Probe, Thread, Internal 65deg, 2MHz, Pointed, FE, Unshielded.	2MHz	Pointed
PTI002CNFE	Probe, Thread, Internal 65deg, 2MHz, Chisel, NFE, Unshielded.	2MHz	Chisel
PTI002CFE	Probe, Thread, Internal 65deg, 2MHz, Chisel, FE, Unshielded.	2MHz	Chisel
Other options available on request.			

Leads to fit above probes:

ETHer NDE Part No.	Description	Instrument	Connector Instrument End	Connector Probe End	Cable Length	Configuration
ALLCX-M02-015A	Lead	Weld/AeroCheck /ETi	Lemo Coaxial	Micro Plug	1.5m	Absolute
ALL12-M02-015A	Lead	Hocking	Lemo 12-Way	Micro Plug	1.5m	Absolute
ALB02-M02-015A	Lead	Various	BNC Plug	Micro Plug	1.5m	Absolute

Saddle and Plug - Thread Inspection Probes

Threaded sections can be inspected using a dedicated probe which can be supplied to fit either external or internal threads precisely.



External Thread Probe



Internal Thread Plug Probe

External threads can be inspected with a Saddle probe with a thread cut into the concave surface. The coil is fitted into the thread section to allow inspection to be carried out with very little probe wobble. A Saddle probe can be in the shape of a segment to screw along the thread like a nut.

Internal threaded sections can be inspected with a threaded Plug probe with a sensor moulded into the threaded area. The Plug probe is then simply moved along the thread, in the area of interest, to ensure 100% inspection.

Saddle and Plug probes are manufactured to order. A sample of the threaded section is usually required as a pattern for making probes.

NDT Supply.com, Inc.

7952 Nieman Road
Lenexa, KS 66214-1560 USA

Phone: 913-685-0675, Fax: 913-685-1125
e-mail: sales@ndtsupply.com, www.ndtsupply.com

