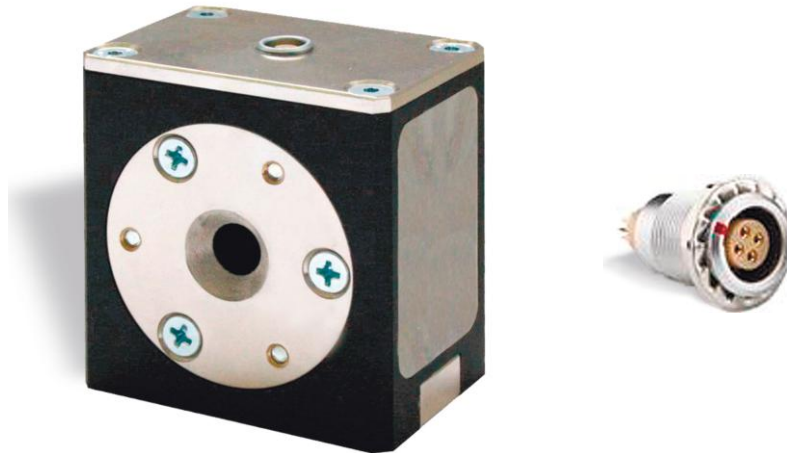


7. Encircling probe for testing the cylindrical objects made of non-magnetic materials (Bridge type)



Designation	Outer diameter, mm/inch	Centre frequency kHz	Frequency range, kHz	Connector	Material
ID250K9.3DD0	from 3 to 180/from .12 to 7	15	2-60	Lemo 04	NFe
		50	10-250		
		250	50-500		
		600	200-1200		

- | | | | | | |
|-----------|-------------|-------------|----------|----------|---|
| ID | 250K | 9.3D | D | 0 | 1. ID – round encircling probe for surface flaws detection. |
| 1 | 2 | 3 | 4 | 5 | 2. Probe frequency: "HZ" designates the Hz range; "K" designates the kHz range; "M" designates the MHz range. |
| | | | | | 3. Through hole diameter, mm. |
| | | | | | 4. Probe type designation: "D". D – Differential. |
| | | | | | 5. Probe modification number. |