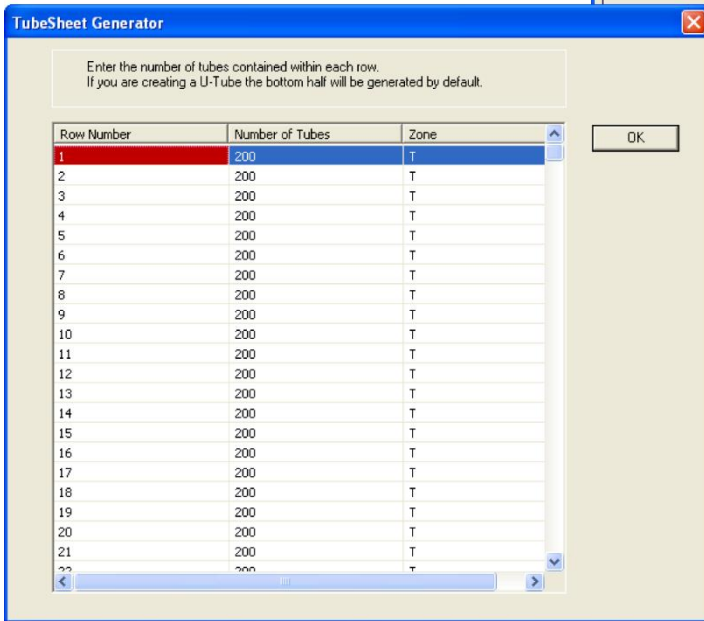
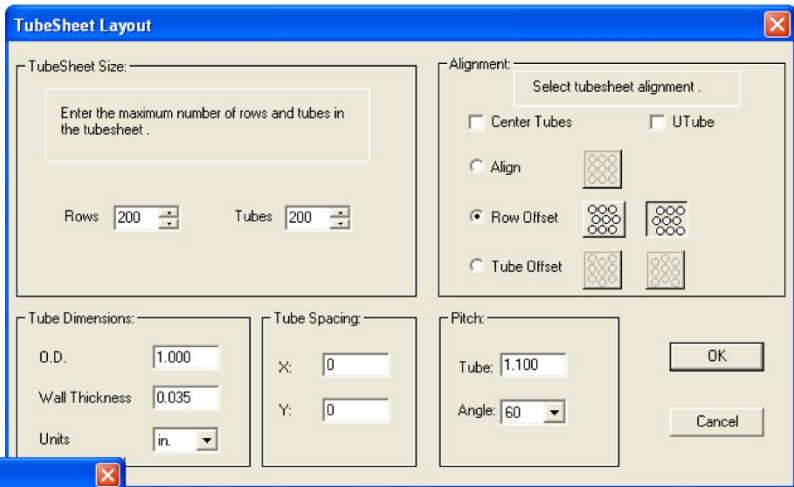


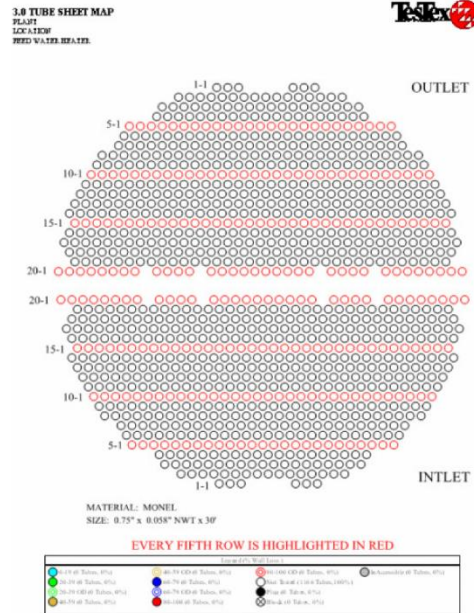


TS-MAP SOFTWARE WITH THE OPTIONAL AR-WIZARD™  
 FOR ALL TUBE SHEET MAPPING APPLICATIONS

TesTex, Inc. has developed the TS-Map™ software to make anything from the most simple to the most complex tube sheet maps. These maps can be created with little effort and in a short amount of time. The optional AR-Wizard™ software was developed for use with the TX-4400 ECT system and the EAGLE 2000 plus RFET system. The AR-Wizard is an automated report writing software that creates an inspection report from the TS-Map™. The report that is generated includes everything needed from color tube sheet maps to sample waveforms.



- Windows XP and Vista compatible
- Extensive Help Menu
- Any tube layout can be made
- Up to 40,000 tubes can be drawn (200 x 200 array)
- Up to 26 sections/zones can be identified



- Tube dimensions can be in either inches or millimeters
- Numbers of tubes in each row can be typed in or manipulated in the map
- Tube lists showing number of tubes in each row can be exported to Excel database when map is finished



- Maps can be inverted so units can be viewed from both ends
- 5 standard legends to choose from
- Any legend can be fully edited to add, remove or change categories
- Multiple colors and fill patterns to choose from

Category Name	Type	Tag	Hot Key	Min Wall Loss(%)	Max Wall Loss(%)	Fill Color	Fill Pattern	Fill Style
0-19	Value	I	1	0	19	White	Horizontal	Solid
20-39	Value	I	2	20	39	Green	Horizontal	Solid
20-39 OD	Value	O	3	20	39	Green	Circle	Solid
40-59	Value	I	4	40	59	Brown	Horizontal	Solid
40-59 OD	Value	O	5	40	59	Brown	Circle	Solid
60-79	Value	I	6	60	79	Blue	Horizontal	Solid
60-79 OD	Value	O	7	60	79	Blue	Circle	Solid
80-100	Value	I	8	80	100	Red	Horizontal	Solid
80-100 OD	Value	O	9	80	100	Red	Circle	Solid
Plug	Label	P	P			Black	Horizontal	Solid
Block	Label	F	F			Black	X	Solid

**Cover Page**

Page Format: Letter (8.50 x 11.00 in)

Report Type:  ECT  RFET

Company Name: \_\_\_\_\_

Plant Name: \_\_\_\_\_

Location: \_\_\_\_\_

Unit: \_\_\_\_\_

Date Tested: April 14, 2009 To: April 14, 2009

Author 1: \_\_\_\_\_

Author 2: \_\_\_\_\_

Author 3: \_\_\_\_\_

Author 4: \_\_\_\_\_

Author 5: \_\_\_\_\_

Final Report:

Report Number: \_\_\_\_\_

Reviewed By: \_\_\_\_\_

Reviewed Date: April 14, 2009

TesTex

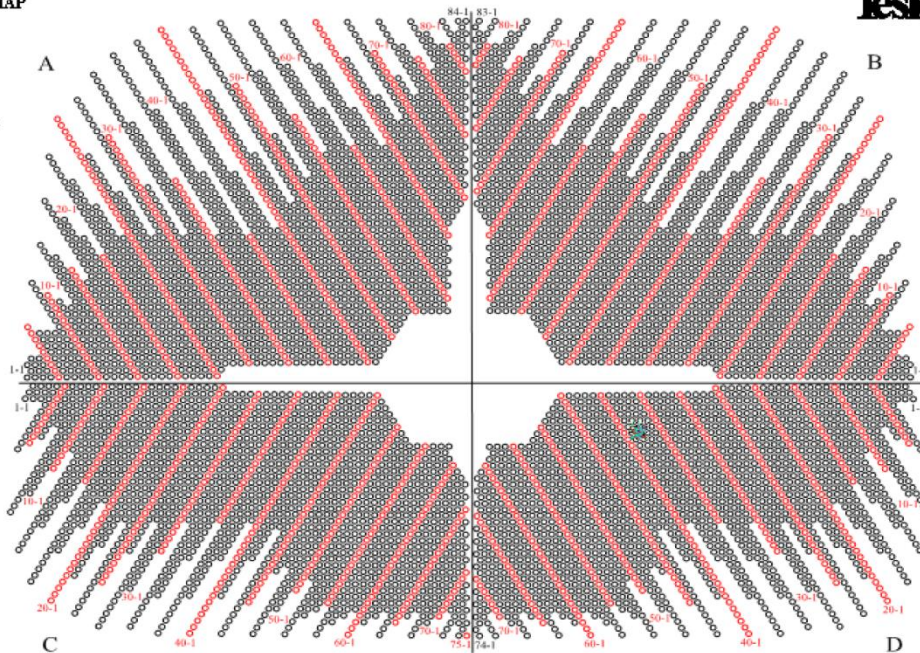
Back Finish Cancel Help

**OPTIONAL AR - WIZARD™**

- Data for every tube inspected; including plug, block, inaccessible, etc. tubes; can be imported from the analysis program with a simple click of the mouse
- On screen, step by step instructions for generating a preliminary or final report
- Either report can be generated within minutes of completing the inspection
- The final report will include: cover page, table of contents, inspection summary, unit details, tube sheet maps, tube test summary, calibrations, sample waveforms, and inspection personnel

**TUBE SHEET MAP**  
 PLANT LOCATION  
 CONDENSER  
 WATER BOX

Viewed From  
 The North  
 End



**EVERY FIFTH ROW IS HIGHLIGHTED IN RED**

0-19 @ Tubes, 0%	40-59 OD @ Tubes, 0%	80-100 OD @ Tubes, 0%	Inaccessible @ Tubes, 0%
20-39 @ Tubes, 0%	60-79 @ Tubes, 0%	Not Tested (7536 Tubes, 100%)	Stuck Cleaner @ Tubes, 0%
20-39 OD @ Tubes, 0%	80-100 OD @ Tubes, 0%	Plug @ Tubes, 0%	Block @ Tubes, 0%
40-59 @ Tubes, 0%			