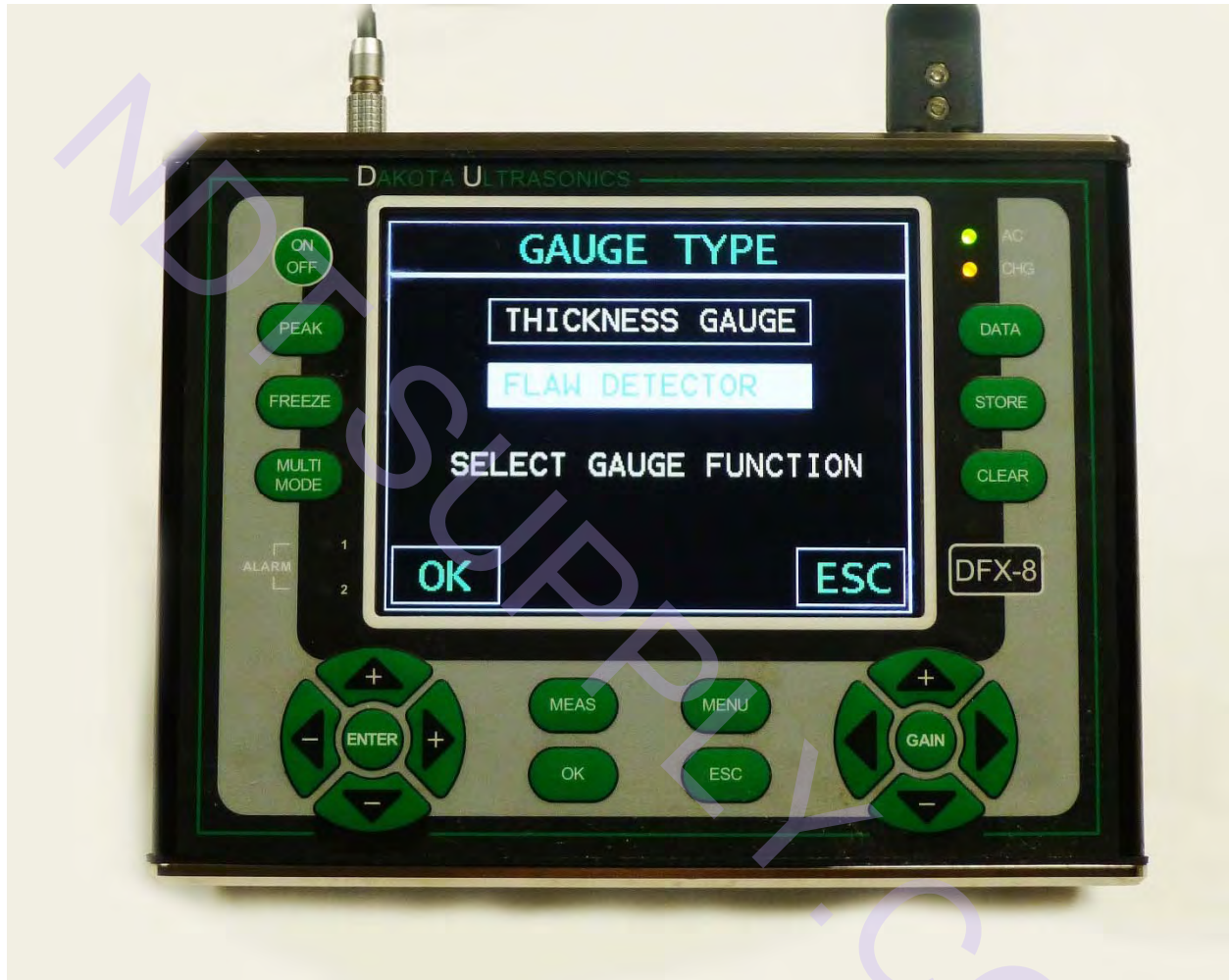


Demonstration of Dakota DFX-8 Straight Beam Applications



The Dakota DFX-8 is 2 instruments in 1

- Select Thickness Gauge for a Multi-Mode Thickness Gauge
- Select Flaw Detection Mode for a very capable Ultrasonic Flaw Detector

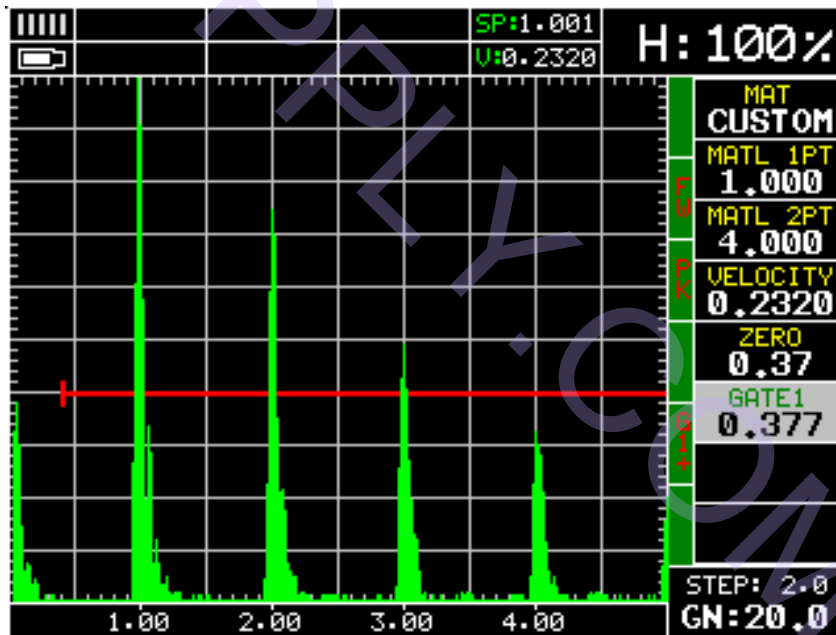
Demonstration of Dakota DFX-8 Straight Beam Applications

INDEX STRAIGHT BEAM APPLICATIONS

1. Straight Beam Application – Introduction
2. Index
3. Calibration 1"
4. Calibration 4"
5. Demo Far Resolution
6. Demo Near Resolution
7. Demo DAC
8. Demo TCG
9. Bridge Pin
10. 3" Steel Block
11. Gas Compressor Bolt Crack
12. Drill Stem Crack
13. Machine Bolt Crack
14. Aluminum Ingot Centerline Crack
15. Railroad Axle Centerline Inclusion
16. Rail Head Piping
17. Rail Bolt Hole Crack -1
18. Rail Bolt Hole Crack -2
19. Dual Probe – Weld Cladding
20. Dual Probe - Bond Test Tungsten Carbide to Steel
21. Delay Line Probe – Thickness Gauging

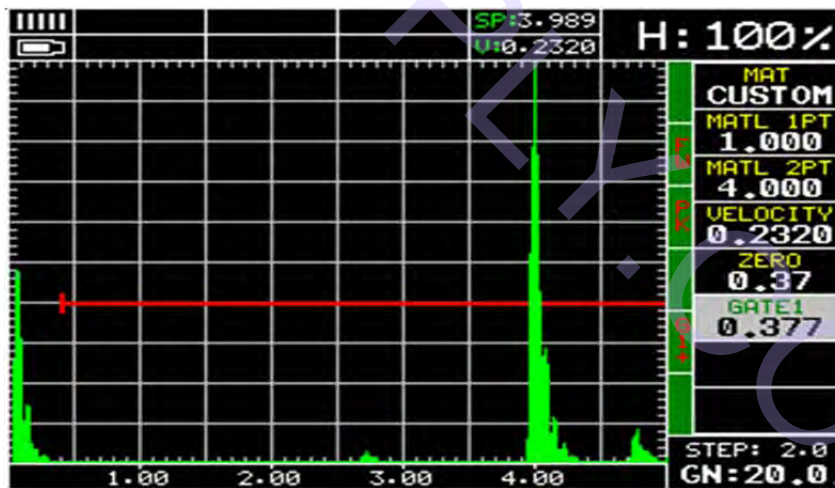
Demonstration of Dakota DFX-8 Straight Beam Applications

Straight Beam, 5 MHz, 3/4" Probe, 5" Range



1" Thickness of IIW Block

Demonstration of Dakota DFX-8 Straight Beam Applications

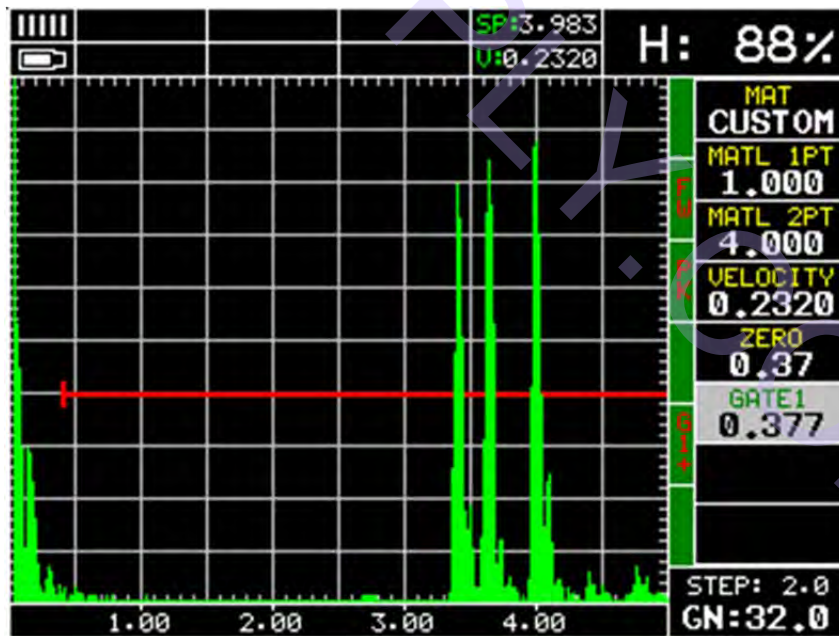
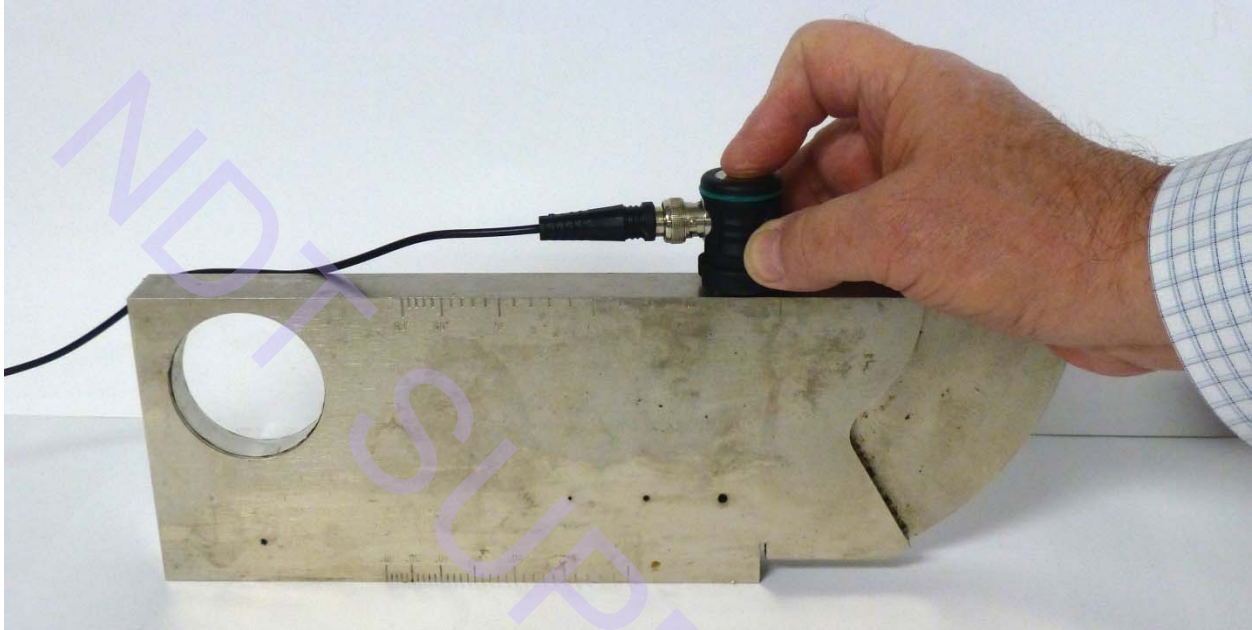


4" Thickness of IIW Block

Note:

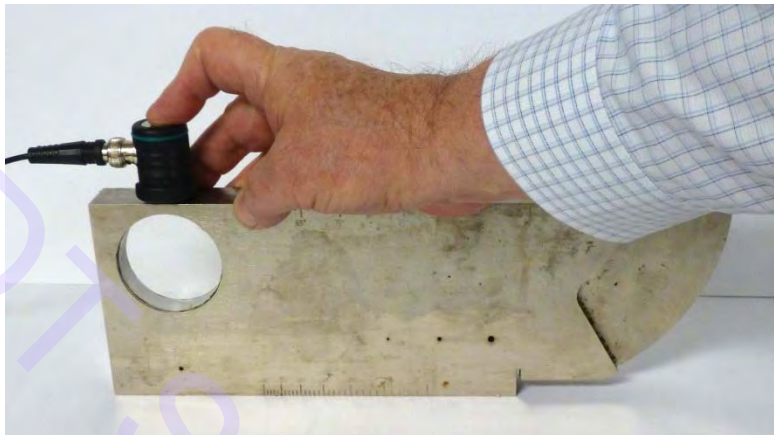
Auto Cal using 2 known thickness 1" & 4"

Demonstration of Dakota DFX-8 Straight Beam Applications



3.4 & 3.6" Resolution Notches in IIW Block

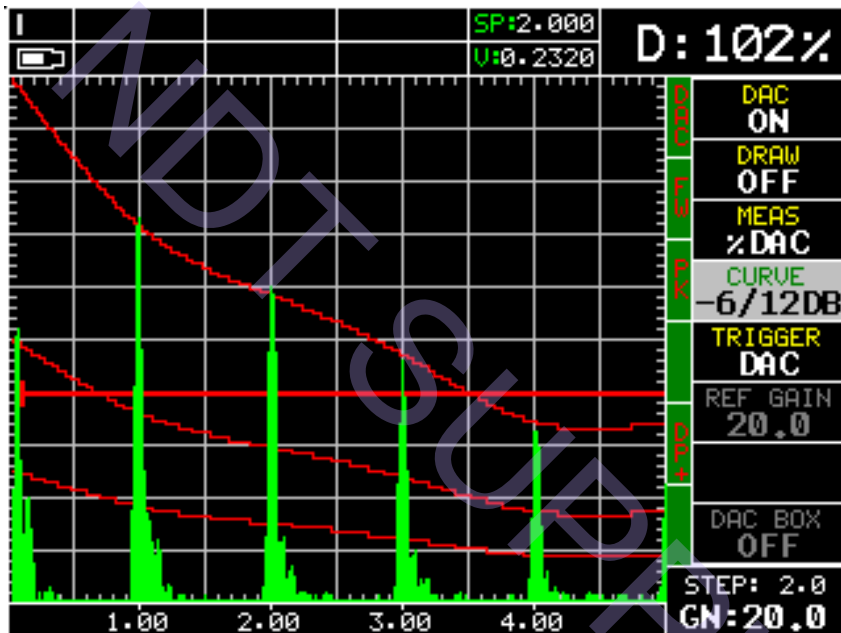
Demonstration of Dakota DFX-8 Straight Beam Applications



Resolving 0.200 Metal Travel Distance to 2" IIW Bore Hole

Demonstration of Dakota DFX-8 Straight Beam Applications

DAC using Straight Beam and 1" Back Wall Echoes



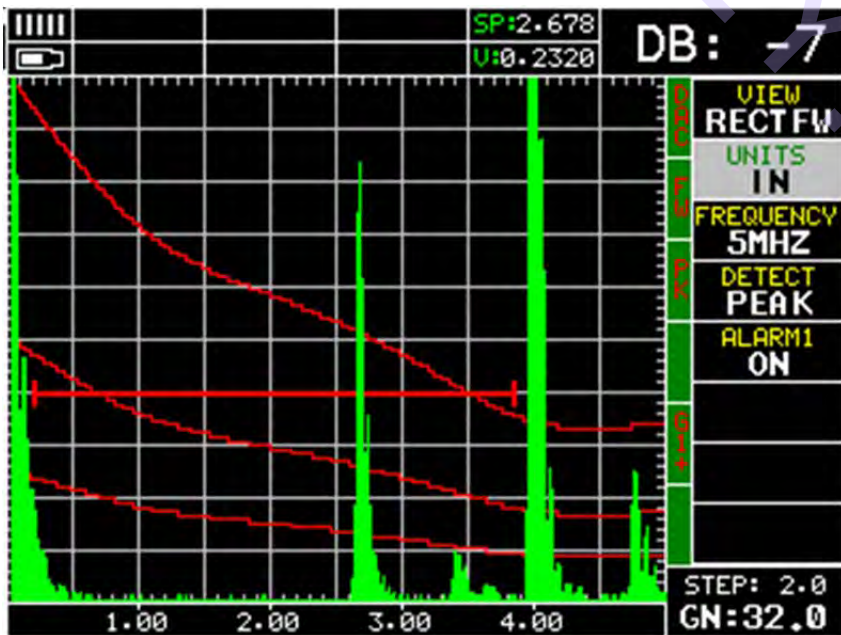
DAC Evaluation Straight Beam

DAC Curves can be set

- DAC
- +6/12 dB
- -6/+6 dB
- -6/14 dB
- -6/12 dB
- -10 dB
- -6 dB
- -2 dB

Trigger selections

- DAC
- GATE

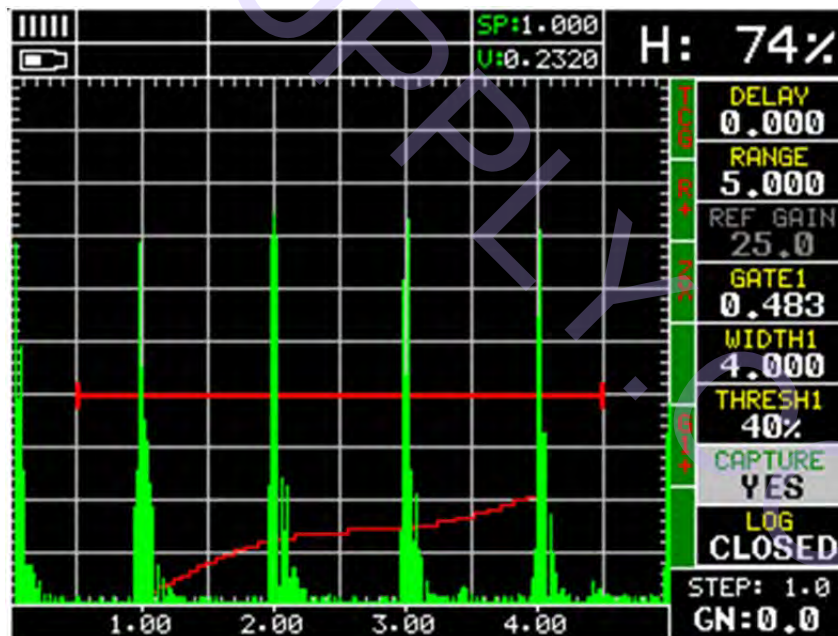


DAC EVALUATION

- DB
- % DAC
- % FSH

[Return to Index Page](#)

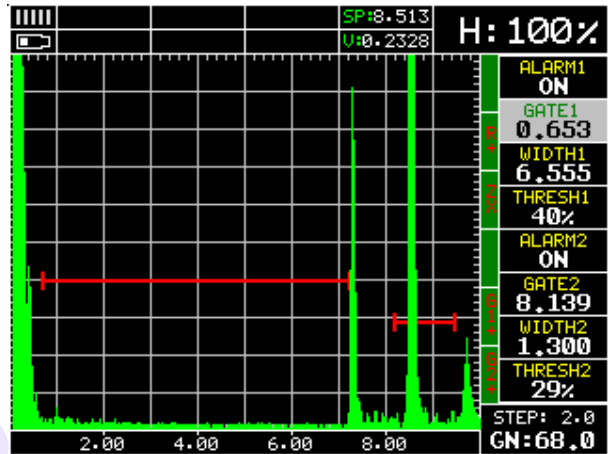
Demonstration of Dakota DFX-8 Straight Beam Applications



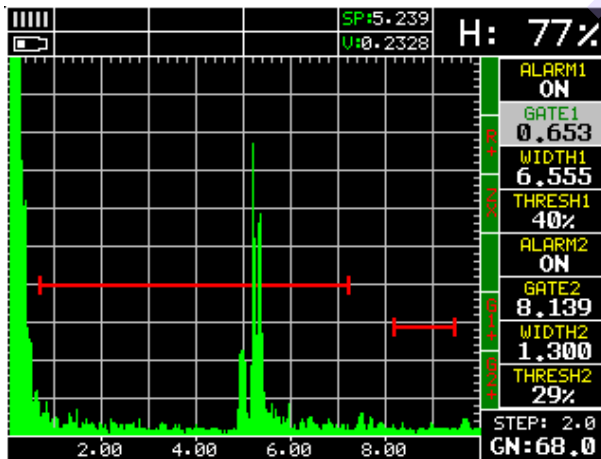
TCG Using 1" Back Wall Echo for demonstration purposes

Demonstration of Dakota DFX-8 Straight Beam Applications

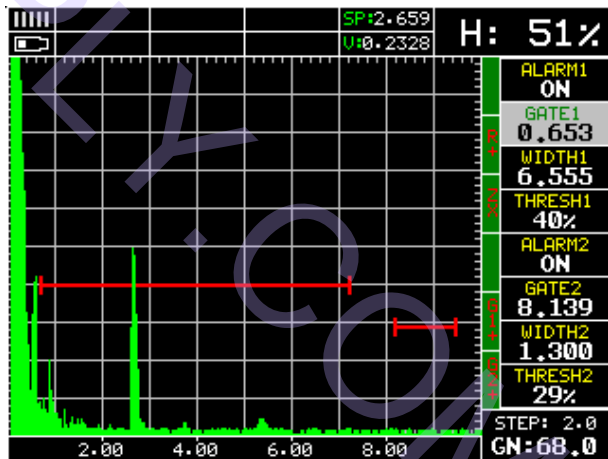
Bridge Pin
Straight Beam Probe



Good Pin Shoulder and End Echo



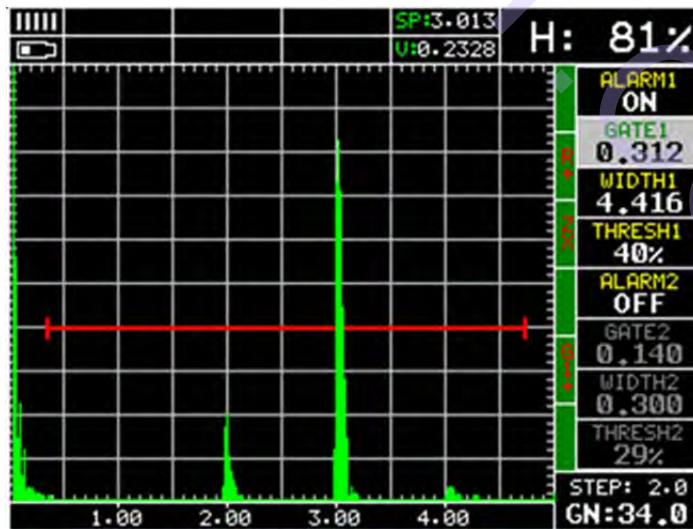
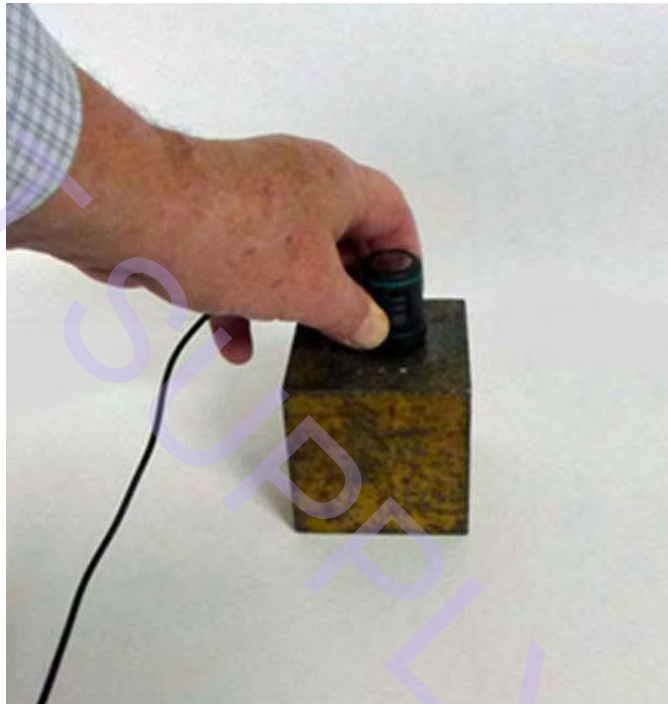
Cracked Pin – 2nd Zone Crack



Cracked Pin – 1st Zone Crack

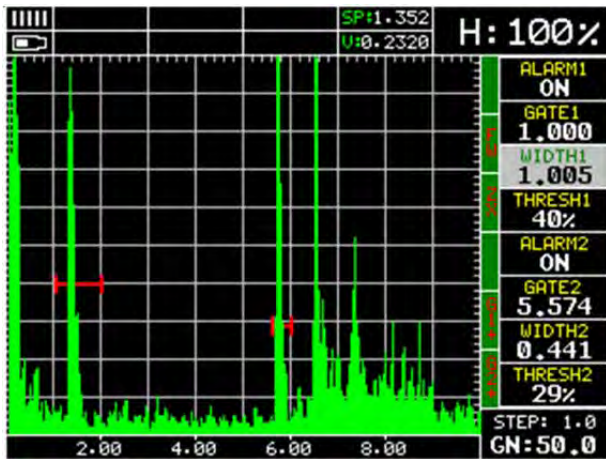
Demonstration of Dakota DFX-8 Straight Beam Applications

3" Steel Block with Flat Bottom Hole Straight Beam



Demonstration of Dakota DFX-8 Straight Beam Applications

Gas Compressor Bolt with Crack Straight Beam Test



Calibration Bolt

Showing both Saw Cut and Back Wall Echo



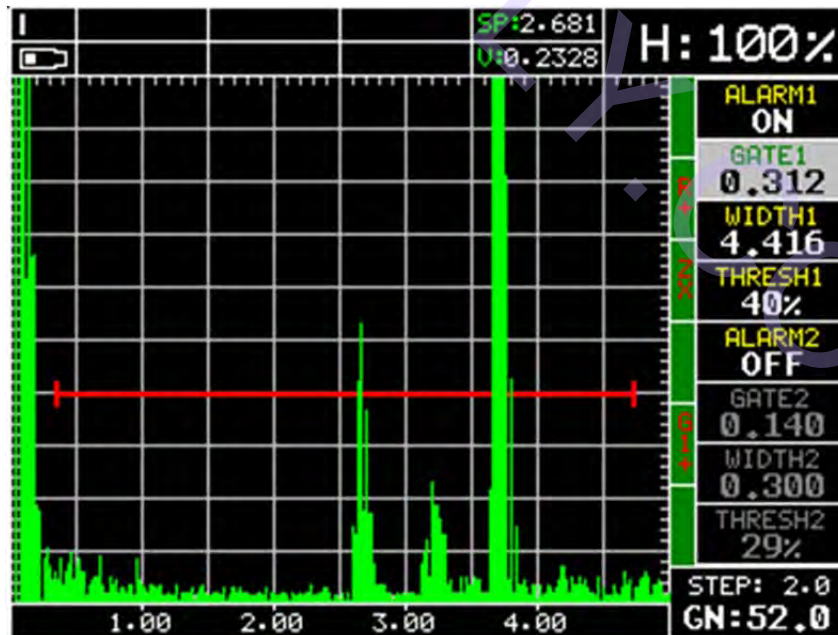
Cracked Bolt

Demonstration of Dakota DFX-8

Straight Beam Applications

Drill Stem with Thread Cracks

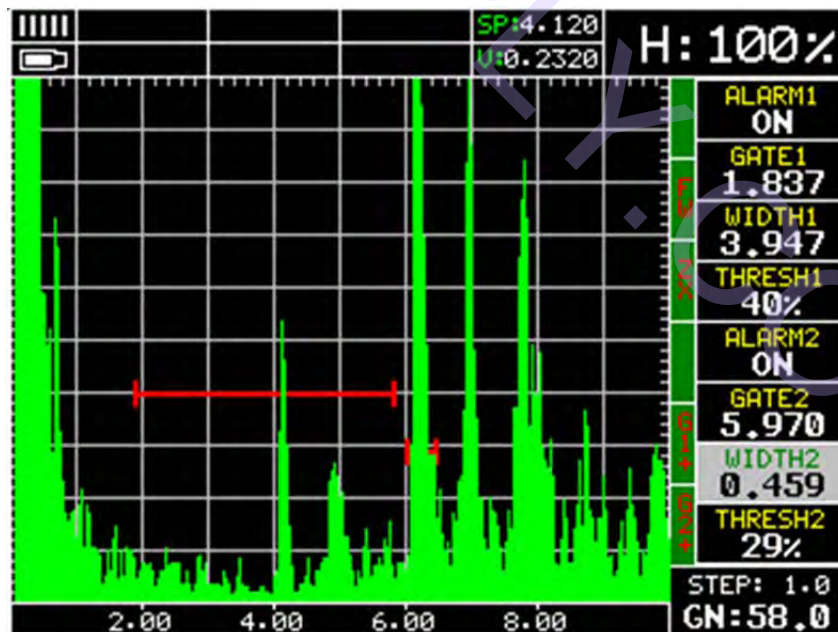
Straight Beam



Small crack at 2.6" & 3.3" note: no loss of Back Wall Echo

Demonstration of Dakota DFX-8 Straight Beam Applications

Cracked 6" Machine Bolt
Straight Beam



6" Bolt with Crack at 4", note strong Back Wall Echo

Demonstration of Dakota DFX-8

Straight Beam Applications

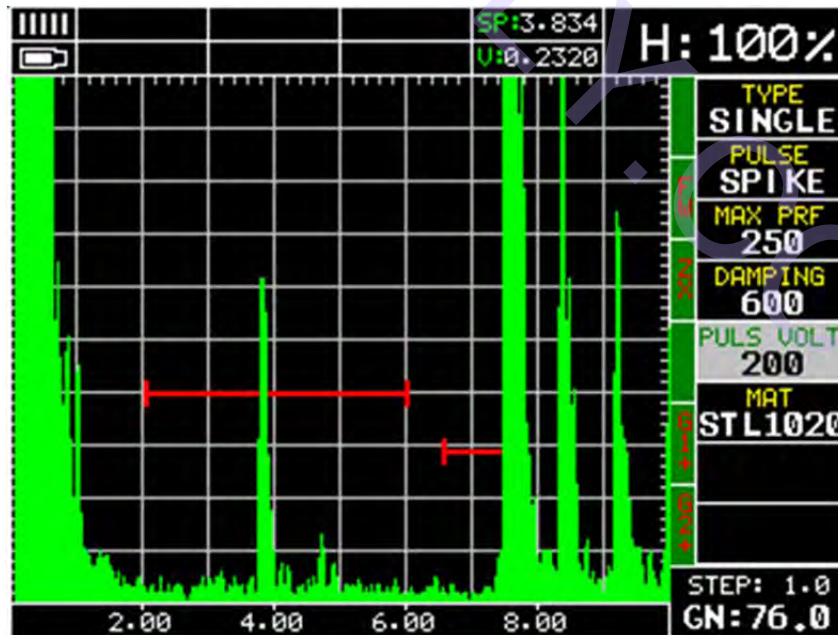
Aluminum Billet with Centerline Crack
Straight Beam



Centerline crack, note complete loss of Back Wall Echo

Demonstration of Dakota DFX-8 Straight Beam Applications

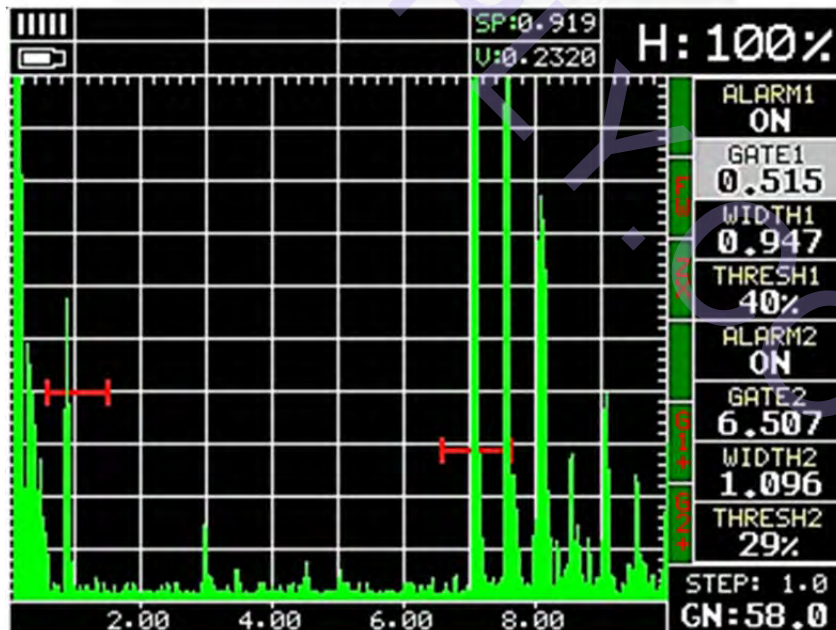
Section of Railcar Axel with small Centerline flaw
Straight Beam



Flaw at 3.8" no loss of Back Wall Echo

Demonstration of Dakota DFX-8 Straight Beam Applications

Rail with Head Piping
Straight Beam



Flaw at 0.9" no loss of Back Wall Echo

Demonstration of Dakota DFX-8 Straight Beam Applications Bolt Hole Cracking in Rail



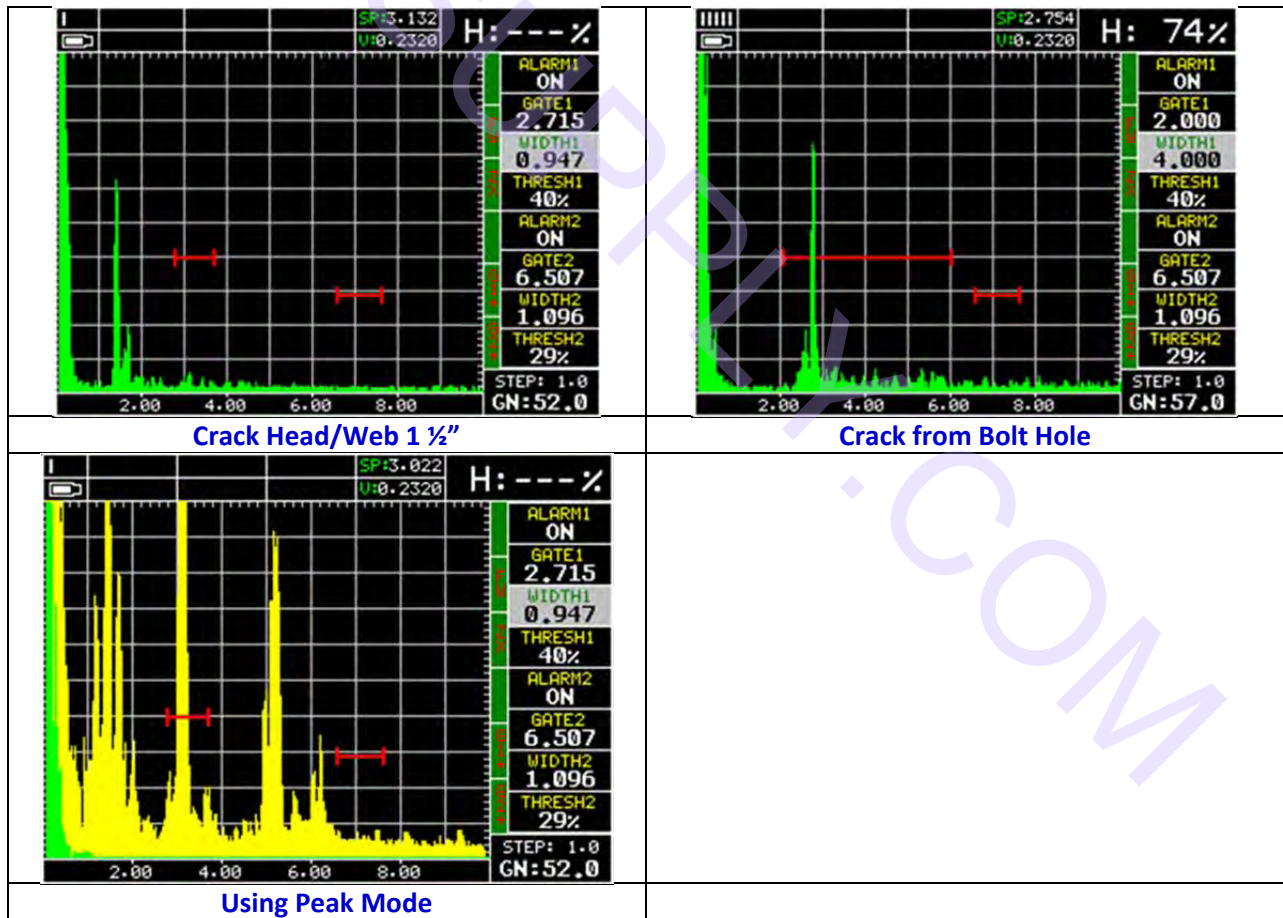
Good Section of Rail



Good Bolt Hole

Demonstration of Dakota DFX-8 Straight Beam Applications

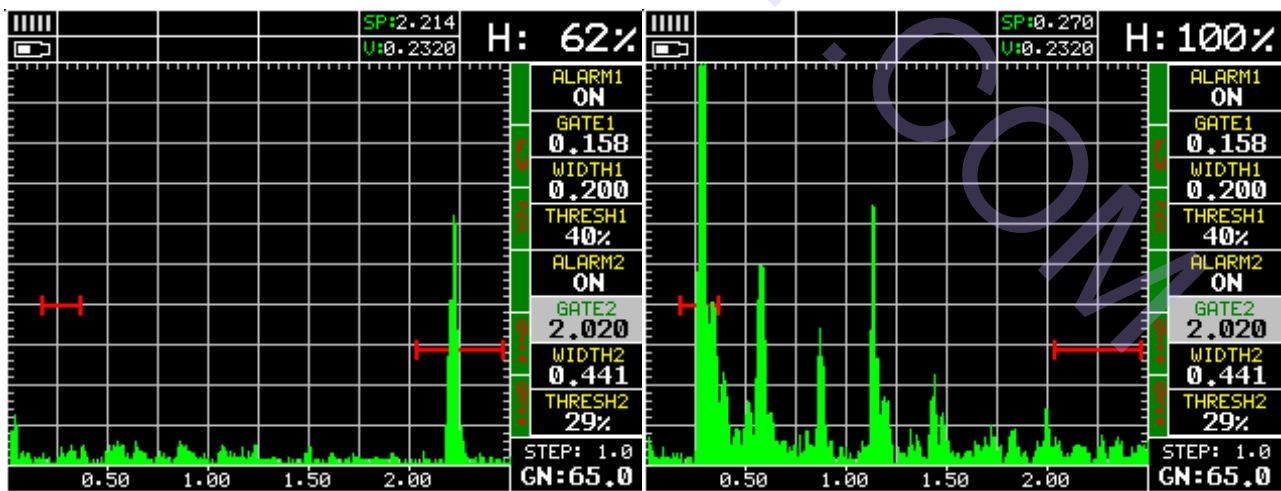
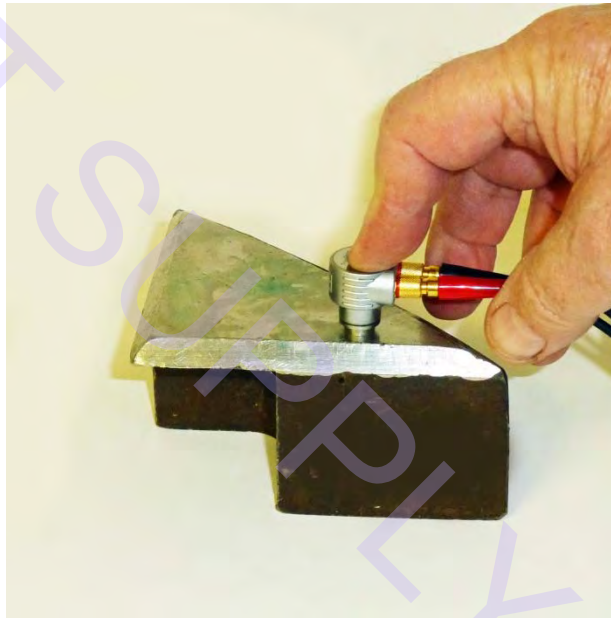
Bolt Hole Cracking



Demonstration of Dakota DFX-8 Straight Beam Applications

DUAL PROBE APPLICATIONS

Bond – Weld Cladding Stainless Steel to Carbon Steel
Dual Probe



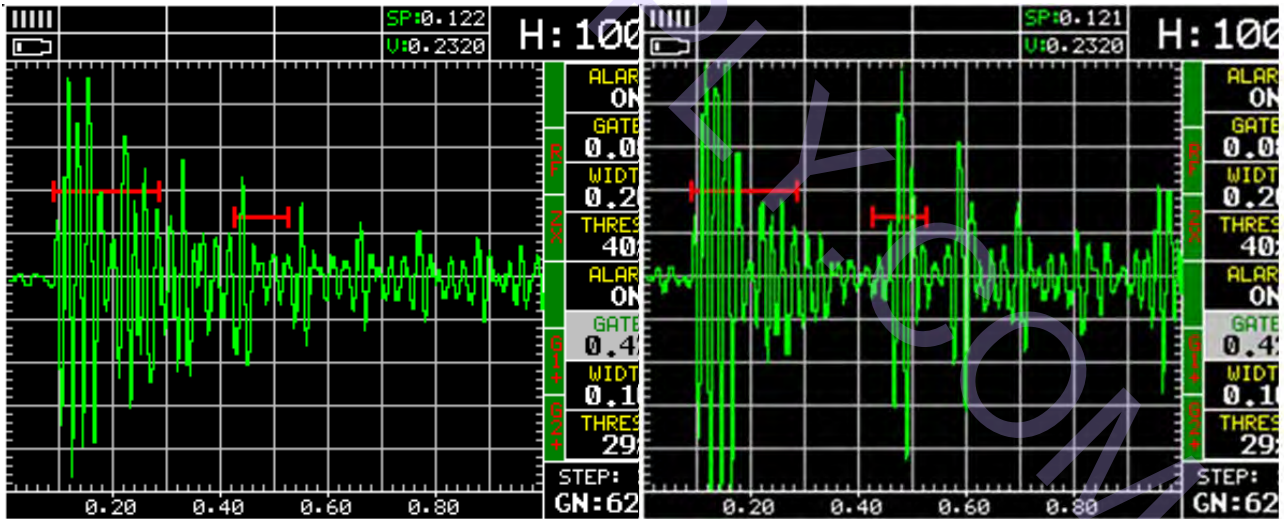
Good Bond
Back Wall Echo at 2.2"

Un-Bonded
Signal at 0.27"

Demonstration of Dakota DFX-8 Straight Beam Applications

Bond Test

Silver Braze Tungsten Carbide to Steel
Dual Probe



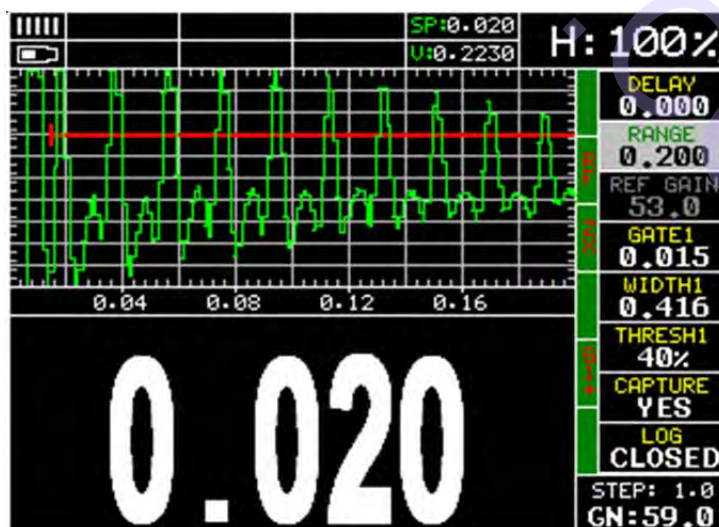
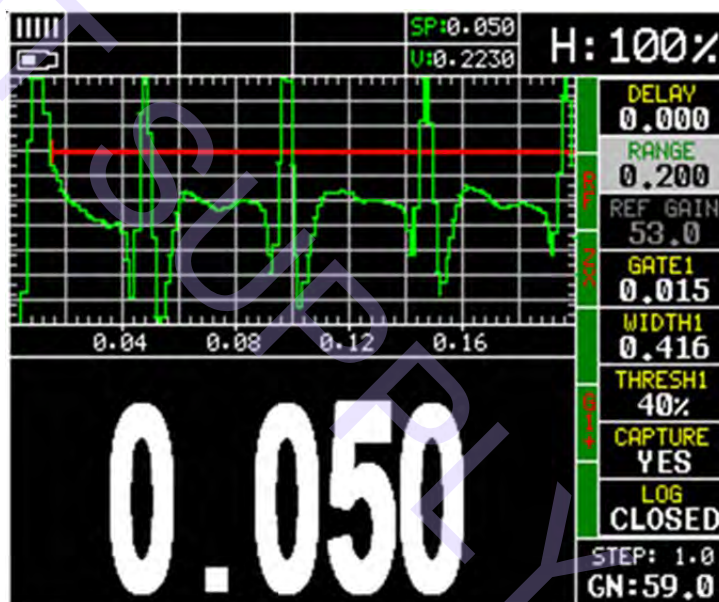
Disbonded
No Back Wall Echo

Bonded
Good Back Wall Echo

Demonstration of Dakota DFX-8 Straight Beam Applications

Delay Line Probe Applications

Thickness Measurement with 10 MHz Delay Line in Flaw Mode 0-1st Echo
Measurement



[Return to Index Page](#)