

TS-1000

IMMERSION Scanner

36" X 24" X 18"
(LXWXD)

LABORATORY IMMERSION SCANNER

TECSCAN'S Immersion Scanners are versatile computer-controlled ultrasonic systems used for Non-destructive Testing of materials. They range from small tabletop scanners all the way to large multi-axes scanners.

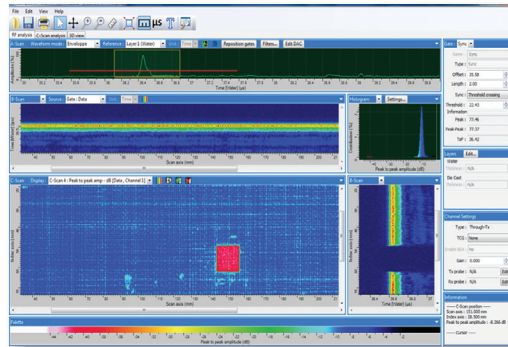
OUR IMMERSIONS SCANNERS are designed to be rugged, highly accurate and repeatable.

A typical configuration consists of two motorized axes: X, Y and one manual Z. Additional axes such as automated Z axis and manual Gimbal/Gimbal assemble can be incorporated to the scanners.

HIGHLIGHTS

- Aluminium structure
- Acrylic tank
- UTPR-50 Pulser receiver
- 12 bit 125 MHZ A/D card
- Motorized XY axes
- Manual Z axis
- Remote access assistance
- Automated Z-axis (optional)
- Manual Swival/Gimbal (optional)
- TecView™ UT data acquisition/analysis

**TECVIEW™
UT**



Typical Scanner Specification

Axis	Max Speed	Accuracy	Resolution (Per Step)	Repeatability
X	12"/s	+/- 0.01"/ft	0.00006"	0.003"
Y	12"/s	+/- 0.01"/ft	0.00006"	0.003"
Z	8"/s	+/- 0.01"/ft	0.00006"	0.003"



T (1) 450-641-5876
F (1) 450-641-5873
E info@tecscan.ca
75 De Mortagne Blvd., Suite 122,
Boucherville, Quebec, Canada J4B 6Y4



7952 Nieman Road, Lenexa, KS 66214-1560 USA
Phone: 913-685-0675, Fax: 913-685-1125
www.ndtsupply.com, sales@ndtsupply.com

Scanner Options

TecScan™ offers a multitude of optional equipment that can be used along with the immersion scanners to enhance their efficiency and improve the overall NDT process.

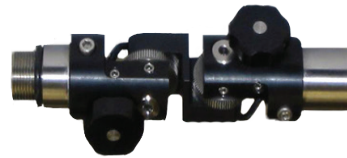
Automated Z-axis (optional)

- Fully motorized Z-axis
- High Z-axis accuracy
- High Z-axis repeatability
- Standard UHF search tube



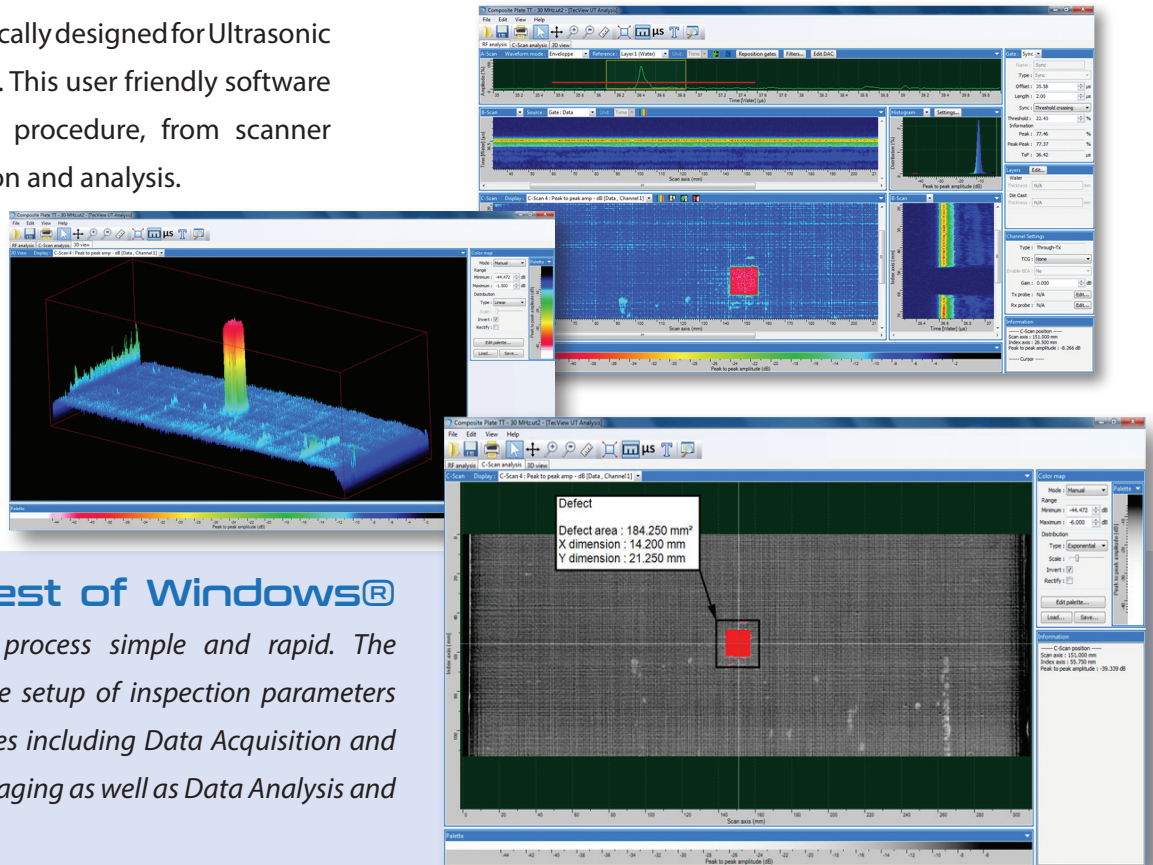
Manual Swivel/Gimbal (optional)

- Small & compact dual rotational axis assembly
- Adjustment knobs for accurate probe positioning
- Available with or without dial indicators



TecView™ UT

Windows® based software specifically designed for Ultrasonic inspections and C-Scan imaging. This user friendly software helps manage the entire NDT procedure, from scanner motion control to data acquisition and analysis.



Combining the best of Windows®

TecView™ UT makes the NDT process simple and rapid. The software assists the user with the setup of inspection parameters by incorporating different modules including Data Acquisition and Management, Robotic control, Imaging as well as Data Analysis and Interpretation.



7952 Nieman Road, Lenexa, KS 66214-1560 USA
Phone: 913-685-0675, Fax: 913-685-1125
www.ndtsupply.com, sales@ndtsupply.com

T (1) 450-641-5876
F (1) 450-641-5873
E info@tecscan.ca
75 De Mortagne Blvd., Suite 122,
Boucherville, Quebec, Canada J4B 6Y4

