

SUBHEADING

ADHESIVE JOINT INSPECTION



Two 0.8mm steel plates glued together

May 25, 2019

STUDY OVERVIEW

Eskil, our CTO & Head of Research and Development, and Yngve, our Software Engineer, conducted a test on an adhesive joints. The study highlights how the dolphicam2 performs on inspections such as this.

Products

This demonstration was conducted using the TRM-DB-8.0 MHz with an 8mm Rexolite.

Material

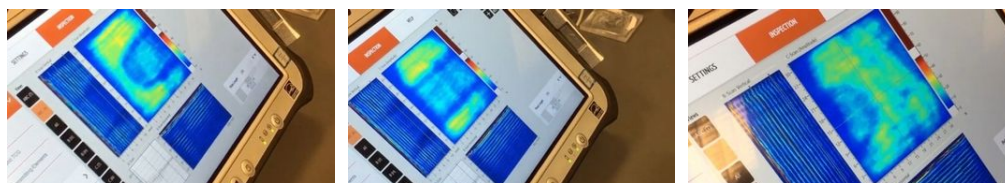
The material being inspected were two 0.8mm steel plates glued together.



Settings

A wide gate was set around several echoes in the plate (you can view the gate in B-scan in pictures below)

The "jet" colour palette was used and compressed, to obtain stronger colour contrast in the C-scan ultrasound image.





FINIDINGS

In the video below, you can clearly can see the adhesive joining on the two steel plates.