

## Laterally Focused Array

### Features

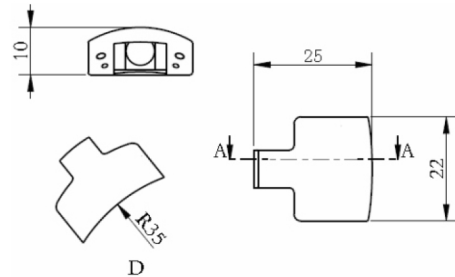
- Tiny Outlines
- Sel-Focusing Elements
- Wedge suitable for  $\Phi 20$ - $\Phi 115$ mm Pipes
- Suitable for Automatic Scanning Systems



D10

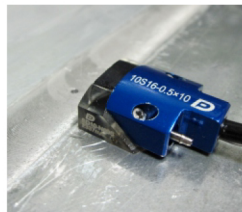


B37



### Applications

- Small Diameter Pipes Inspection
- Thin Pipe or Plate Welds Inspection
- Friction Stir Welds Inspection
- Limited Space Workpiece Inspection



Friction Stir Welds



Small Diameter  
Pipe Welds



GIS Line Conductor

### Specifications and Dimensions

Model	Frequency (MHz)	Elements	Pitch (mm)	Active Aperture (mm)	Elevation (mm)	Casing Dimensions						Case Type
						Long (L)		Width (W)		Height (H)		
						mm	in	mm	in	mm	in	
4S16-0.5*10	4	16	0.5	8	10	25	0.98	22	0.87	10	0.39	D10
5S16-0.5*10	5	16	0.5	8	10	25	0.98	22	0.87	10	0.39	
7.5S16-0.5*10	7.5	16	0.5	8	10	25	0.98	22	0.87	10	0.39	
10S16-0.3*10	10	16	0.3	4.8	10	25	0.98	22	0.87	10	0.39	
1.5S16-0.5*10	1.5	16	0.5	8	10	22	0.87	25	0.98	14	0.55	D94
2S16-0.5*10	2	16	0.5	8	10	22	0.87	25	0.98	14	0.55	
2.25S16-0.5*10	2.25	16	0.5	8	10	22	0.87	25	0.98	14	0.55	
2.5S16-0.5*10	2.5	16	0.5	8	10	22	0.87	25	0.98	14	0.55	
4S16-0.5*10	4	16	0.5	8	10	22	0.87	25	0.98	14	0.55	
3.5S32-1.0*32	3.5	32	1	32	32	41	1.61	60	2.36	39	1.54	B73