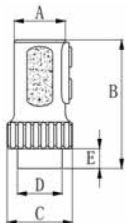
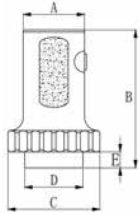


European Standard

- PL Series is the default probe type
- Lemo 00(C5) Side Mounting Connector



Specification		Dimensions										Connector Direction
mm	in	A		B		C		D		E		
Φ9/2	Φ0.35	20.0	0.79	49.0	1.93	24.5	0.96	12.0	0.47	8.0	0.31	Lemo-00/ Side Mounting
Φ11/2	Φ0.43	20.0	0.79	49.0	1.93	24.5	0.96	17.5	0.69	8.0	0.31	
3.5 x 10	0.14 x 0.39											

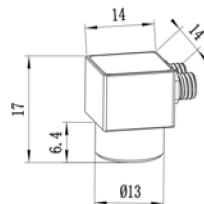


Specification		Dimensions										Connector Direction
mm	in	A		B		C		D		E		
Φ21/2	Φ0.83	30.0	1.18	65.3	2.57	44.5	1.75	28.5	1.12	7.5	0.30	Lemo-00/ Side Mounting
6 x 20	0.24 x 0.79											
7 x 18	0.28 x 0.71											

Specification						
Frequency MHz	Diameter		Focal Length		Models	
	mm	in	mm	in	PL	C
1	Φ21/2	Φ0.83	20	0.79	DA1P21FS20	DA1C21FS20
2	Φ8/2	Φ0.314	6	0.24	DA2P8FS6	DA2C8FS6
2	Φ11/2	Φ0.43	8	0.31	DA2P11FS8	DA2C11FS8
2	3.5 x 10	0.14 x 0.39	10	0.39	DA2P3.5 x 10FS10	DA2C3.5 x 10FS10
2	3.5 x 10	0.14 x 0.39	18	0.71	DA2P3.5 x 10FS18	DA2C3.5 x 10FS18
2	7 x 18	0.28 x 0.71	15	0.59	DA2P7 x 18FS15	DA2C7 x 18FS15
2	7 x 18	0.28 x 0.71	30	1.18	DA2P7 x 18FS30	DA2C7 x 18FS30
4	Φ8/2	Φ0.314	6	0.24	DA4P8FS6	DA4C8FS6
4	3.5 x 10	0.14 x 0.39	10	0.39	DA4P3.5 x 10FS10	DA4C3.5 x 10FS10
4	3.5 x 10	0.14 x 0.39	18	0.71	DA4P3.5 x 10FS18	DA4C3.5 x 10FS18
4	6 x 20	0.24 x 0.79	12	0.47	DA4P6 x 20FS12	DA4C6 x 20FS12
4	6 x 20	0.24 x 0.79	25	0.98	DA4P6 x 20FS25	DA4C6 x 20FS25
5	Φ8/2	Φ0.314	3	0.12	DA5P8FS3	DA5C8FS3
5	Φ9/2	Φ0.35	10	0.39	DA5P9FS10	DA5C9FS10
5	Φ9/2	Φ0.35	25	0.98	DA5P9FS25	DA5C9FS25
10	Φ5/2	Φ0.2	3	0.12	DA10P5FS3	DA10C5FS3



Dimensions		
Specification		Connector Direction
mm	in	
Φ8/2	0.314	Microdot/ Side Mounting



Dimensions		
Specification		Connector Direction
mm	in	
Φ5/2	0.20	Microdot/ Side Mounting

