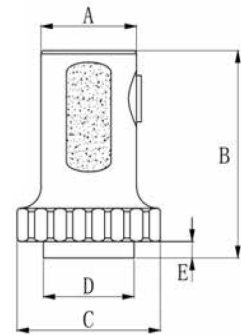


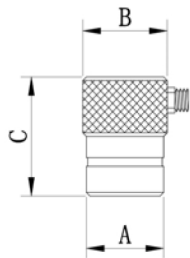
European Standard - N2

- Microdot(L5), Lemo 00(C5), and Lemo 01(C9) Side Mounting Connectors, For above $\phi 5$ can be customized as Top Mounting Connector

Specification		Dimensions										Connector Direction
mm	in	A		B		C		D		E		
10	0.375	20.0	0.79	42.5	1.67	24.0	0.94	14.0	0.55	2.0	0.08	Lemo-00 / Side Mounting
24	0.94	30.0	1.18	59.5	2.34	45.0	1.77	29.0	1.14	2.5	0.10	Lemo-1 / Side Mounting



Housing Dimensions
(10/24mm Crystal Diameter)



Housing Dimensions
(5mm Crystal Diameter)

Specification		Dimensions						Connector Direction
mm	in	A		B		C		
5	0.20	9.0	0.35	10.0	0.39	9.0	0.35	Microdot / Side Mounting

Frequency	Specification			
	Diameter		Model	
	MHz	mm	in	PL
1	10	0.375	N2-1P10	N2-1P10-H
	24	0.94	N2-1P24	N2-1P24-H
2	10	0.375	N2-2P10	N2-2P10-H
	24	0.94	N2-2P24	N2-2P24-H
4	10	0.375	N2-4P10	N2-4P10-H
	24	0.94	N2-4P24	N2-4P24-H
5	5	0.20	N2-5P5	N2-5P5-H
	10	0.375	N2-5P10	N2-5P10-H
10	5	0.20	/	N2-10P5-H

