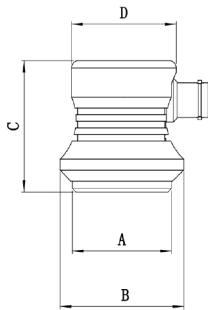


North American Standard - N4

- Large crystal diameter to ensure high sensitivity of probe, and wider coverage area of detection
- BNC(Q9) Side Mounting Connector, can be customized as Top Mounting Connector

Specification		Dimensions							
		A		B		C		D	
mm	in	mm	in	mm	in	mm	in	mm	in
13	0.50	19	0.75	28.5	1.12	36	1.42	22	0.87
19	0.75	27	1.06	37	1.44	36	1.42	30	1.18
25	1.00	31	1.22	41	1.59	36	1.42	34	1.34
29	1.125	37	1.46	47	1.83	36	1.42	40	1.57



Frequency		Diameter		Specification		
MHz	mm	in	PL	PH	C	
0.5	19	0.75	/	N4-0.5P19-H	/	
	25	1.00	N4-0.5P25	N4-0.5P25-H	/	
	29	1.125	N4-0.5P29	N4-0.5P29-H	/	
1	13	0.50	N4-1P13	N4-1P13-H	N4-1C13	
	19	0.75	N4-1P19	N4-1P19-H	/	
	25	1.00	N4-1P25	N4-1P25-H	/	
2.25	29	1.125	N4-1P29	N4-1P29-H	/	
	13	0.50	N4-2.25P13	N4-2.25P13-H	N4-2.25C13	
	19	0.75	N4-2.25P19	N4-2.25P19-H	/	
3.5	25	1.00	N4-2.25P25	N4-2.25P25-H	/	
	29	1.125	N4-2.25P29	N4-2.25P29-H	/	
	13	0.50	N4-3.5P13	N4-3.5P13-H	/	
5	19	0.75	N4-3.5P19	N4-3.5P19-H	/	
	25	1.00	N4-3.5P25	N4-3.5P25-H	/	
	13	0.50	N4-5P13	N4-5P13-H	/	
7.5	19	0.75	N4-5P19	N4-5P19-H	/	
	25	1.00	N4-5P25	N4-5P25-H	/	
10	13	0.50	N4-7.5P13	N4-7.5P13-H	/	
	13	0.50	N4-10P13	N4-10P13-H	/	