



## ITI Rigid Borescope Series

Highly configurable and cost effective, ITI Rigid Borescopes deliver bright, sharp, uniform images and video.

### APPLICATIONS

- Aircraft engines
- Auto engines
- Gun sniffing
- Locks
- Castings
- And more

Available in five configurations.

**STANDARD:** With a fixed line of sight (LOS) and fixed field of view (FOV), ITI's Standard Rigid Borescope includes range of focus and illumination fibers. Choose from either eyepiece, camera C-mount or both with our interchangeable design.

**ORBITAL SCAN:** For complete panoramic examinations, ITI's Orbital Scan Borescope rotates 375° around borescope axis without rotation of illumination fiber cable.

**AXIAL SCAN:** ITI's Axial Scan Borescope works as three-scopes-in-one with panoramic illumination that covers total viewing area. While in-line with borescope probe, scan allows viewing from 40° (FO) LOS to 125° quickly and efficiently.

**ZOOM:** In low power, ITI's true 4x Zoom Borescope provides 40° FOV for orientation. In high power, zooms to 10° FOV for critical inspections. This results in a true zoom objective with a 4x change in FOV with constant f#. Unlike other instruments with zoom eyepieces, magnification is real and performance is unequalled.

**SCAN/ZOOM:** The unique, dual-capability of ITI's Scan/Zoom Borescope combines the features of a variable axial scan with those of variable FOV (Zoom). This enables the operator to scan in low power for overall coverage, then zoom to high power for high-resolution, detailed examination.



ORBITAL SCAN  
375° Rotation



AXIAL SCAN  
125° Coverage



ZOOM  
4X Zoom



SCAN/ZOOM  
120° Coverage 4X Zoom



Optional camera



Instantly switch from eyepiece to camera

## Instrument **ITI** Technology, Inc.

### ITI Rigid Borescope Series

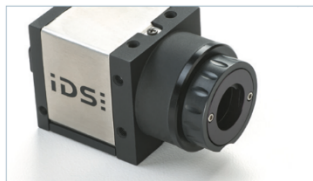
Instantly switch from eyepiece to camera with the ITI **DIRECT-CONNECT** feature. No camera-to-eyepiece adapter means no optical degradation. Reduce errant colors with ITI's **TRUE COLOR MAGNIFICATION** system.

### Optional Configurations

- Quartz UV Illuminator
- Waterproof
- High Temperature
- Integral Light Guide

### Accessories

- White Light Illuminator
- UV Illuminator
- Light Guide
- Digital Camera



Optional camera

### STANDARD BODY STYLE

Model Number	Diameter		Working Length			FOV	LOS
	mm	inch	cm (inch)				
123004	4	.159"	10 (4)	18 (7)	25 (10)	20°-40°-60°	F- FO-RA-RO
123006	6	.238"	23.5 (9.2)	36.5 (14.3)	49.4 (19.5)	20°-40°-60°	F- FO-RA-RO
123008	8	.315"	30 (11.5)	50 (19.5)	70 (27.5)	20°-40°-60°	F- FO-RA-RO
123010	10	.396"	40 (15.5)	60 (23.5)	80 (31.5)	20°-40°-60°	F- FO-RA-RO
123016	16	.625"	50 (20)	80 (30)	110 (44)	40°-70°	F- FO-RA-RO
123019	19	.750"	50 (20)	80 (30)	110 (44)	40°-70°	F- FO-RA-RO

Forward viewing 4, 6, 8 & 10 mm scopes available with 100° FOV, 60° not available on FO or RO viewing products. Right angle mirror sleeve dimensions available for forward viewing 20° and 40°

RMS	123004	123006	123008	123010	123016	123019
mm	4.8	7.6	9.5	11.1	17.5	22.2
inch	0.187	0.3	0.375	0.437	0.687	0.875

### ORBITAL SCAN STYLE

Model Number	Diameter		Working Length			FOV	LOS
	mm	inch	cm (inch)				
123004	4	.159"	10 (4)	18 (7)	25 (10)	20°-40°-60°	FO-RA-RO
123006	6	.238"	23.5 (9.2)	36.5 (14.3)	49.4 (19.5)	20°-40°-60°	FO-RA-RO
123008	8	.315"	30 (11.5)	50 (19.5)	70 (27.5)	20°-40°-60°	FO-RA-RO
123010	10	.396"	40 (15.5)	60 (23.5)	80 (31.5)	20°-40°-60°	FO-RA-RO

### AXIAL SCAN STYLE

Model Number	Diameter		Working Length			FOV	Variable LOS
	mm	inch	cm (inch)				
123008	8	.315"	30 (11.5)	50 (19.5)	70 (27.5)	35°	40°-125°
123010	10	.396"	40 (15.5)	60 (23.5)	80 (31.5)	35°	40°-125°
123016	16	.625"	50 (20)	80 (30)	110 (44)	35°	40°-125°
123019	19	.750"	50 (20)	80 (30)	110 (44)	35°	40°-125°

### ZOOM STYLE

Model Number	Diameter		Working Length			Variable FOV	LOS
	mm	inch	cm (inch)				
123016	16	.625"	50 (20)	80 (30)	110 (44)	10°-40°	F- FO-RA-RO
123019	19	.750"	50 (20)	80 (30)	110 (44)	10°-40°	F- FO-RA-RO

### SCAN ZOOM STYLE

Model Number	Diameter		Working Length			Variable FOV	Variable LOS
	mm	inch	cm (inch)				
123016	16	.625"	50 (20)	80 (30)	110 (44)	10°-40°	40°-125°
123019	19	.750"	50 (20)	80 (30)	110 (44)	10°-40°	40°-125°