

NDT Supply.com

P.O. BOX 7350
Shawnee Mission, KS 66207-0350 USA



Spellman XRV X-Ray Systems



System Matched, Integrated, Tested, and Warrantied... all from One USA Source

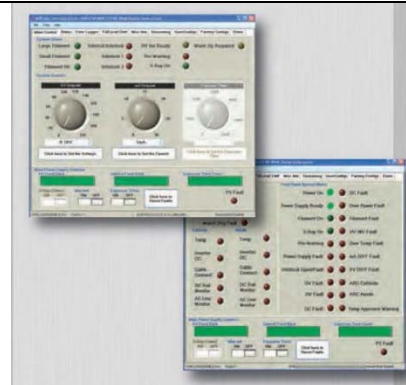
- Tube, generator, HV cable(s), cooler, controller & I/O fully tested together at Spellman High Voltage.
- Assembly ready "Plug And Play" out of the box
- Cables, hoses, fittings all part of the packaged solution
- One phone call to Spellman for support
- 2 year warranty for system exceeds that of individual outsourced components / assemblies.
- X-Ray tube warranty is prorated.



GUI Control Software for XRV

The GUI is specifically designed for controlling XRV series power supplies. User friendly Windows based menu allows operator to control all functions and also provides systems diagnostic capabilities.

- **Automatic X-Ray tube warm-up**
- **Max watts operation**
- **Timed or Continuous Exposure modes**
- **Configuration menu for user options**
- **Fault and status monitor**
- **Easy set up and integration**

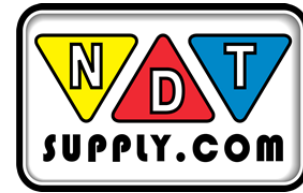


Phone: 913-685-0675
Fax: 913-685-1125

e-mail: sales@ndtsupply.com
web: www.ndtsupply.com

NDT Supply.com

P.O. BOX 7350
Shawnee Mission, KS 66207-0350 USA



Spellman XRV X-Ray Systems

XRV Controller

With its' One-Shot Profiles, intuitive Touch-Centric menu and interface flexibility, this powerful controller is the perfect match for your system.

- 7" Touch Screen LCD
- 10/100/1000MBIT Ethernet
- Unlimited storage and recall of X-Ray tube profiles
- Complete X-Ray tube database
- Auto and customizable tube seasoning profiles
- Bench and rack mount available



XRV System Interface Box

- Power distribution for System Components
- Safety interlocks for doors and Tube Cooler
- Rack, bench or wall mount IP65 enclosure
- Meets requirements of 21 CFR 1020.40



Industrial X-Ray Tube Chillers and Coolers

X-Ray tube coolers and chillers from Industry leading manufacturers are designed and validated to work with standard metal ceramic X-Ray tube offerings.

- Closed loop X-Ray tube coolers for water and oil
- Closed loop X-Ray tube chillers for water and oil when ambient temperature rises to 40°C
- Coolers available with WW or OW options



Metal Ceramic X-Ray Tubes

- Full range of metal ceramic tubes from Industry leading manufacturers
- Water cooled unipolar designs offered in 100, 160 and 225kV configurations
- Oil cooled bipolar designs offered in 320, 350 and 450kV configurations
- Available in a variety of power levels, focal spots and target angles



Phone: 913-685-0675
Fax: 913-685-1125

e-mail: sales@ndtsupply.com
web: www.ndtsupply.com

NDT Supply.com

P.O. BOX 7350
Shawnee Mission, KS 66207-0350 USA



Spellman XRV X-Ray Systems

Standard and Custom HV X-Ray Cables

- Available in custom lengths from Industry leading manufacturers
- Straight and right angle connections available
- Standard or Spring loaded connections available



Phone: 913-685-0675
Fax: 913-685-1125

e-mail: sales@ndtsupply.com
web: www.ndtsupply.com