

## Infinitem Splitter Series

*Separates oil and water emulsions!*

The Splitter Series are compact, portable, cabinet-enclosed machines perfect for shop use where daily waste volumes range from under 50-gal drum to 250 gallons. These models operate on 115VAC, 60Hz and are extremely quiet and energy efficient. As with all NDT Products wastewater filtration systems, they are fully automated and designed to run unattended. A number of patented control monitoring devices ensure the machine will shut itself off before any type of damaging condition can occur. Every machine that leaves our factory is assembled by master craftsmen with hand selected components. Our staff of qualified engineers and technicians is only a phone call away.

## Choosing the Right Splitter

**SPLITTER JR**  
Nominal capacity:  
50 gal.



**SPLITTER**  
Nominal capacity:  
150 gal.



**SPLITTER XD**  
Nominal capacity:  
250 gal.



## Key Features & Benefits:

- **Automatic timer control** – Minimizes operator involvement
- **Pulse-Kleen cycle programmed into microprocessor controls** – Improves membrane lifetime and increases overall processing efficiency.
- **Fully contained in durable cabinet with wheels** – No complicated parts to assemble and allows for easy mobility
- **Easy-to-read control panel** – Intuitive and user-friendly operation minimizes errors
- **Automatic protection control** – Worry-free operation
- **No expensive chemical treatment required** – Cost savings and maximizes safety
- **Quiet 115 VAC, 60 Hz motor** – Low operating cost and no special wiring required
- **Interchangeable membranes** – Allows for wastestream flexibility

## Dye Penetrant Waste Processing System

- System extracts clean water from penetrant washwater for discharge to sewer or septic system
- No need for expensive activated carbon
- Water will not fluoresce and can be re-used for a closed-loop system
- Reduces high costs of off-site disposal
- Fully automated and energy efficient
- Compact, portable models starting at 50 gallons per day capacity



## Water Coolant Processing System

- System extracts clean water from spent coolants for discharge to sewer or septic system – or for re-use
- Reduces high costs of off-site disposal
- Fully automated, portable and energy efficient
- Can be used with most water-soluble coolants
- Models starting at 50 gallons per day capacity
- Optional Process Tanks, Pre-Filters available



## Specifications

### General Specifications

#### Construction

- Fully contained in a durable cabinet
- Cabinet constructed of corrosion resistant, powder-coated steel
- Cabinet on rubber wheels for maximum mobility
- Stainless steel pump

#### Controls

- Automatic PulseKleen operation improves performance and extends membrane life
- Microprocessor with 3-Position Timer
- Pressure Gauge
- High Temperature Warning Light



- Nano-filtration membranes with patented KlearFlo design
- Stainless steel removable (cleanable) strainer
- Viton seals

- High Temperature Limit
- Low Pressure Cutout
- Thermal Motor Overload Protection
- Auto-Start Option Available
- Temperature Limit: 145°F (62.7°C)
- pH Limit: 2-12

## Applications

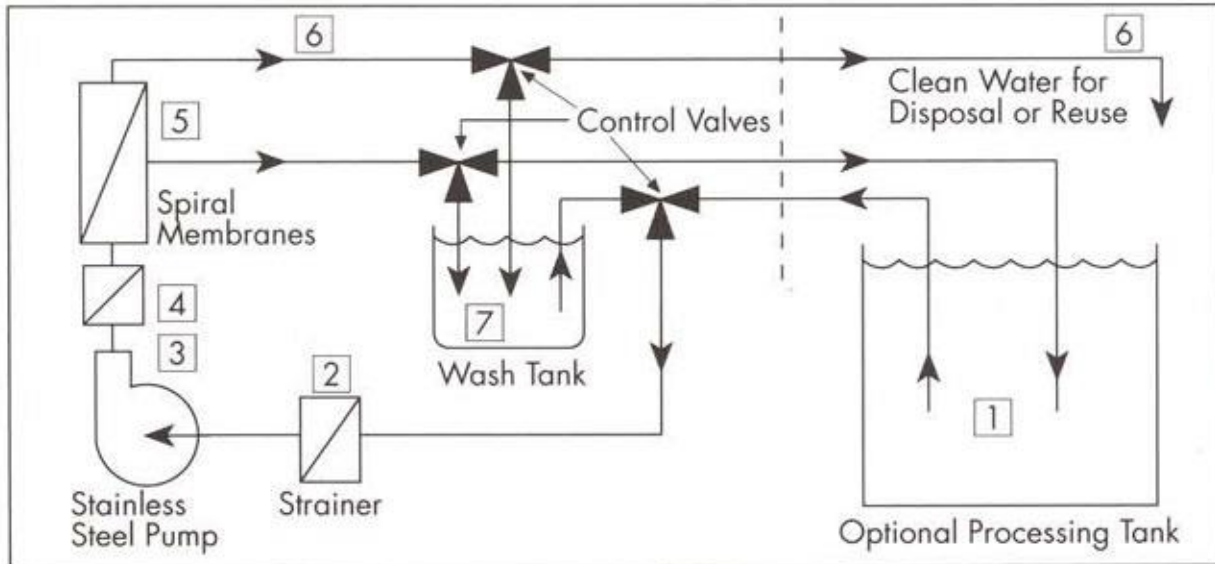
- Aqueous (water-based) cleaners for parts washers, floor cleaning, equipment washdown, etc.
- Machine coolants and water-soluble cutting oils
- Dye Penetrant rinses for non-destructive testing
- Air Compressor condensation
- Water-based Ink washes for printing
- Oil-Water emulsions
- Many other aqueous wastes

## Electricals

- 1.0 HP Close-Coupled Centrifugal Pump
- 115 VAC, 1 phase, 60 Hz
- GFCI plug included, UL/cUL listed for damp locations
- Other voltages available, consult factory for more information

## Technical Specifications

| Models                                     | Splitter Jr.                         | Splitter                             | Splitter XD                           |
|--|--------------------------------------|--------------------------------------|---------------------------------------|
| <b>Nominal Capacity (gallons per day):</b> | 50                                   | 150                                  | 250                                   |
| <b>Dimensions:</b>                         | 30" x 21.5" x 18"<br>76 x 55 x 46 cm | 30" x 21.5" x 18"<br>76 x 55 x 46 cm | 40" x 21.5" x 18"<br>102 x 55 x 46 cm |
| <b>Weight:</b>                             | 130 lbs. (59 kg)                     | 130 lbs. (59 kg)                     | 145 lbs. (65.8 kg)                    |
| <b>Membranes:</b>                          | Qty 1<br>9" spiral wound             | Qty 2<br>9" spiral wound             | Qty 2<br>19" spiral wound             |



Oily wastewater is drawn from the processing tank [1] and fed to the strainer [2] for removal of large solid particles. From there, the stainless steel pump [3] transports the wastewater under pressure to the prefilter [4] and spiral membranes [5]. Here the clean water [6] is separated for discharge or reuse while the oily wastewater is re-circulated to the processing tank. The three control valves can be adjusted to re-circulate detergent from the on-board wash tank [7] for periodic membrane cleanings.

Various tank options available.