

IMMERSION SCANNER

TecScan's Immersion Scanners are versatile computer-controlled ultrasonic systems used for the Nondestructive Testing of materials. They range from small table top scanners all the way to large multi-axes scanners.

Our immersion scanners are designed to be rugged, highly accurate and repeatable. A typical configuration consists of three motorized axes: X, Y & Z. Additional axes such as motorized or manual Swivel/Gimbal & Gimbal/Gimbal assemblies, Turn Tables and Bar Stock indexers can optionally be incorporated to the scanners.

Highlights

- Modular design for future upgrade
- Heavy-duty acrylic/stainless steel tank
- Motorized XYZ axes (up to 6 axes)
- Motion control electronics
- Computer control workstation
- TecView™ UT control & analysis suite
- Contour following option
- Remote access assistance

www.tecscan.ca



Typical Scanner Specification

Axis	Max Speed	Accuracy	Resolution (Per Step)	Repeatability
X	8-24"/Sec	±0.0005"/	0.00008"	0.002"
Y	6-18"/Sec	±0.0005"/	0.00008"	0.002"
Z	6-12"/Sec	±0.0005"/	0.00008"	0.002"
Swivel (A)	45°/Sec	±0.30°	0.01°	0.05°
Gimbal (B)	45°/Sec	±0.35°	0.01°	0.05°
Turntable (TT)	30RPM	Run Out ±0.02"	0.001°	0.01°

*Scanner Specifications could be customized

Scanner Options

TecScan offers a multitude of optional equipment that can be used along with the immersion scanners to enhance their efficiency and improve the NDT process. All of these options work seamlessly with our TecView UT Software package. Some of these options include:

Automated Turntable



- Stainless steel low-profile construction
- Available in many diameter size or capacity
- Motorized with 500 lbs up to 10,000 lbs centered load
- Optional high precision self centering three-Jaw Chuck

Automated Gimbal/Gimbal



- Manual or Motorized Swivel/Gimbal and Gimbal/Gimbal
- Rotational Transducer Support
- Accurate Ultrasonic beam adjustment
- Eliminates the traditional encumbrance of UT inspections

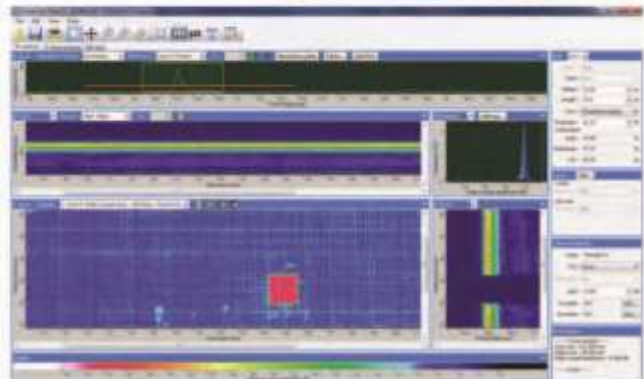
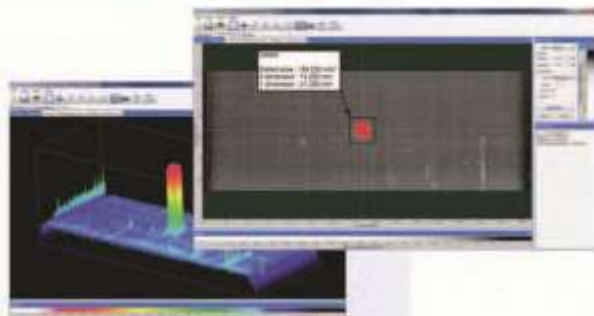
Manual Gimbal/Gimbal



- Designed for laboratory environments
- Small and compact dual rotational axis assembly
- Adjustment knobs for accurate probe positioning
- Available with or without dial indicators

TECVIEW™ UT

Combining the best of Windows® operating systems and graphical user interface, TecView™ UT makes the NDT process simple and rapid. The software assists the user with the setup of inspection parameters by incorporating different modules including Data Acquisition and Management, Robotic control, Imaging as well as Data Analysis and Interpretation.



SCANNER UPGRADE

TecScan also retrofits outdated Immersion scanners. Our approach to upgrades is similar in practice to the construction of a new scanner as we update:

- The UT and Data Acquisition Instrumentation
- The C-scan Imaging and Interpretation software
- The Motion Control Hardware

TecScan will perform complete verification of the electric and mechanical components.



3 Axis Lab Immersion Scanner