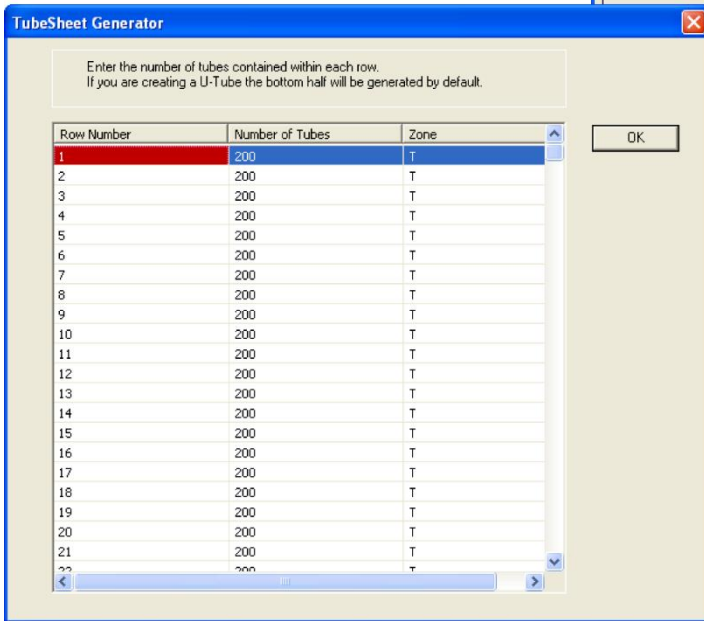
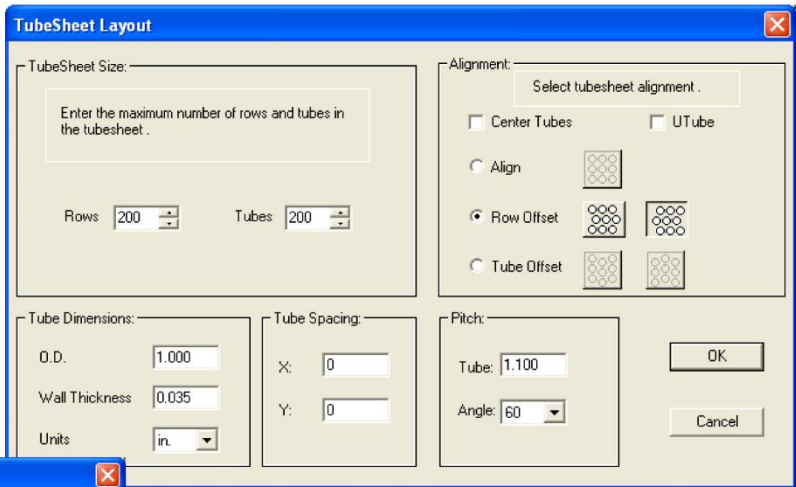


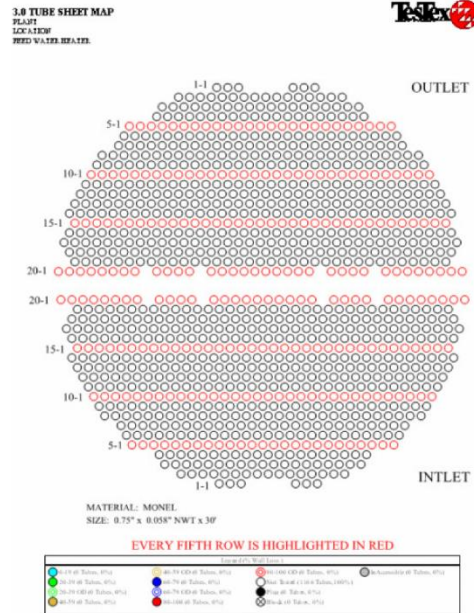
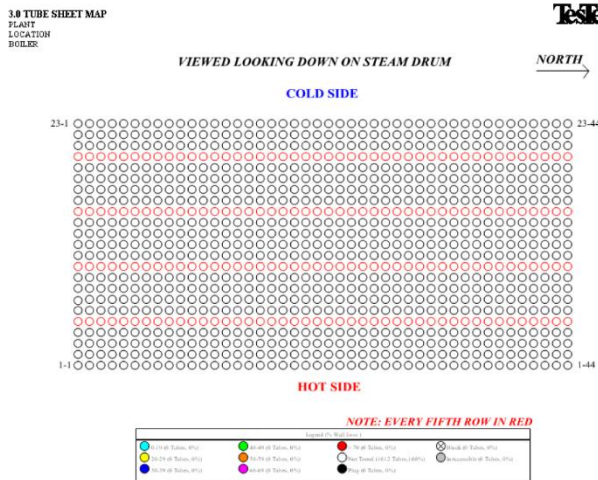


TS-MAP SOFTWARE WITH THE OPTIONAL AR-WIZARD™
FOR ALL TUBE SHEET MAPPING APPLICATIONS

TesTex, Inc. has developed the TS-Map™ software to make anything from the most simple to the most complex tube sheet maps. These maps can be created with little effort and in a short amount of time. The optional AR-Wizard™ software was developed for use with the TX-4400 ECT system and the EAGLE 2000 plus RFET system. The AR-Wizard is an automated report writing software that creates an inspection report from the TS-Map™. The report that is generated includes everything needed from color tube sheet maps to sample waveforms.



- Windows XP and Vista compatible
- Extensive Help Menu
- Any tube layout can be made
- Up to 40,000 tubes can be drawn (200 x 200 array)
- Up to 26 sections/zones can be identified



- Tube dimensions can be in either inches or millimeters
- Numbers of tubes in each row can be typed in or manipulated in the map
- Tube lists showing number of tubes in each row can be exported to Excel database when map is finished



- Maps can be inverted so units can be viewed from both ends
- 5 standard legends to choose from
- Any legend can be fully edited to add, remove or change categories
- Multiple colors and fill patterns to choose from

Category Name	Type	Tag	Hot Key	Min Wall Loss(%)	Max Wall Loss(%)	Fill Color	Fill Pattern	Fill Style
0-19	Value	I	1	0	19	White	Horizontal	Solid
20-39	Value	I	2	20	39	Green	Horizontal	Solid
20-39 OD	Value	O	3	20	39	Green	Circle	Solid
40-59	Value	I	4	40	59	Brown	Horizontal	Solid
40-59 OD	Value	O	5	40	59	Brown	Circle	Solid
60-79	Value	I	6	60	79	Blue	Horizontal	Solid
60-79 OD	Value	O	7	60	79	Blue	Circle	Solid
80-100	Value	I	8	80	100	Red	Horizontal	Solid
80-100 OD	Value	O	9	80	100	Red	Circle	Solid
Plug	Label	P	P			Black	Horizontal	Solid
Block	Label	F	F			Black	X	Solid

Cover Page

Page Format: Letter (8.50 x 11.00 in)

Report Type: ECT RFET

Company Name: _____

Plant Name: _____

Location: _____

Unit: _____

Date Tested: April 14, 2009 To: April 14, 2009

Author 1: _____

Author 2: _____

Author 3: _____

Author 4: _____

Author 5: _____

Final Report:

Report Number: _____

Reviewed By: _____

Reviewed Date: April 14, 2009

TesTex

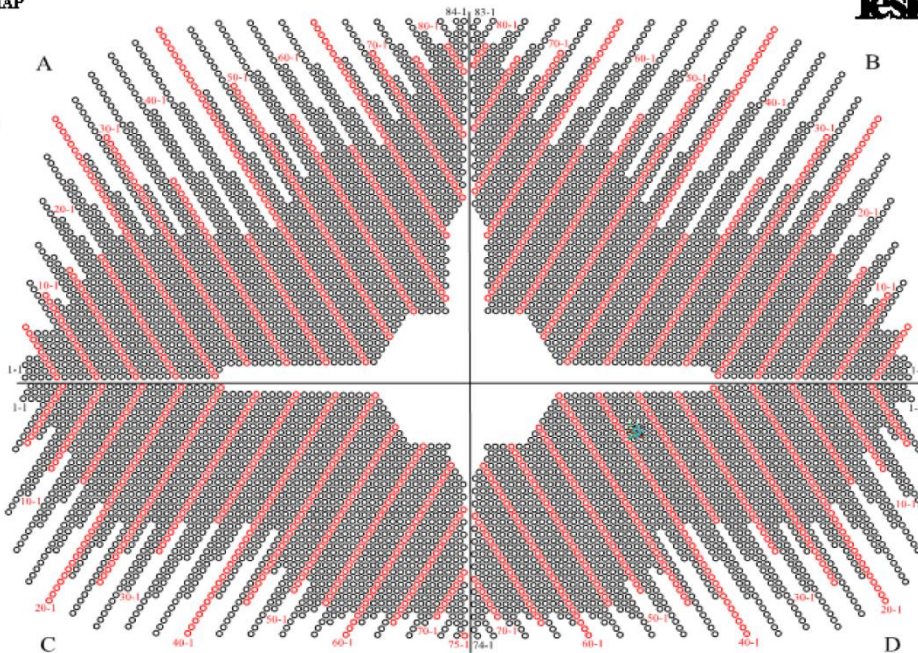
Back Finish Cancel Help

OPTIONAL AR - WIZARD™

- Data for every tube inspected; including plug, block, inaccessible, etc. tubes; can be imported from the analysis program with a simple click of the mouse
- On screen, step by step instructions for generating a preliminary or final report
- Either report can be generated within minutes of completing the inspection
- The final report will include: cover page, table of contents, inspection summary, unit details, tube sheet maps, tube test summary, calibrations, sample waveforms, and inspection personnel

TUBE SHEET MAP
PLANT
LOCATION
CONDENSER
WATER BOX

Viewed From
The North
End



EVERY FIFTH ROW IS HIGHLIGHTED IN RED

0-19 @ Tubes, 0%	40-59 OD @ Tubes, 0%	80-100 OD @ Tubes, 0%	Inaccessible @ Tubes, 0%
20-39 @ Tubes, 0%	60-79 @ Tubes, 0%	Not Tested (7536 Tubes, 100%)	Stuck Cleaner @ Tubes, 0%
20-39 OD @ Tubes, 0%	80-100 OD @ Tubes, 0%	Plug @ Tubes, 0%	Block @ Tubes, 0%
40-59 @ Tubes, 0%			