

Golden Engineering XRS-4 Pulsed X-Ray Unit



The XRS-4 is a 370kV, battery operated, pulsed X-ray generator used in security and light industrial applications. Pulsed X-rays generate a high intensity X-ray energy burst (pulse) in a very short period of time (10 nanoseconds). The XRS-4 provides a significant increase in penetrating capabilities compared to other models, 1.5" of steel when used with a digital imaging system. The output dose of each pulse is approximately 5mR measured 12 inches from the X-ray machine.

Weighing in at 20 pounds, the XRS-4 is significantly larger and heavier than other Golden Engineering generators but is still considered extremely portable by industry standards. The XRS-4 has a single package design that includes a DeWalt battery pack, high voltage head, sturdy glass tube and electronic controls. 2 features unique to the XRS-4 include having a robust aluminum housing and a bellows located in the handle, improving durability and longevity of the generator. The electronic control module has a menu-based design that greatly enhances operator interface capabilities, allowing the operator to change the pulse rate of the machine, set multiple pulse trains with appropriate rests in between and easily track the life of the machine.

Key Features & Benefits:

Features:

- Maximum 370 kVp
- Menu-based software
- Simple variable pulse setting
- Compatible with CR and DR digital technology
- Anodized aluminum construction
- Built-in tripod mount

Safe:

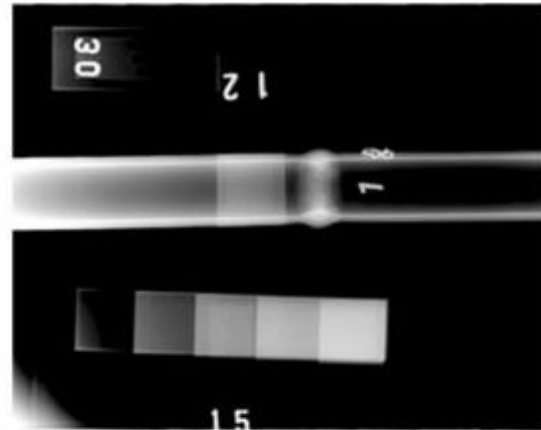
- Minimal disruption to facility operations
- 20 ft. stand-off distance behind the unit
- Contains no hazardous material

High Portable:

- 22 lb. unit with significant penetrating capability
- High energy output voltage with minimal input voltage
- Power, control and tube in a single package design

Cost Effective:

- Affordable alternative technology
- Minimal regulatory costs
- Significant time and labor savings



NDT Supply.com

7952 Nieman Road
Lenexa, KS 66214 USA



Specifications:

Power:	DeWalt DC9096 18V Battery
Output Dose:	4.5 to 7.0 mR / pulse measured 12" from the source
Pulse Rate:	9 pulses per second
Source Size:	1/8" (3mm)
Max Photon Energy:	370 kVp
Pulse Width:	10 nanoseconds
Beam Angle:	40 degree standard / 60 degree available upon request
Current Draw:	17 amps
Max Duty Cycle:	200 pulses per 4 minutes
Warm Up time:	None Required
Warranty:	1 year limited warranty parts, labor and service
Dimensions:	17.43" x 5.43" x 7.91" (44.27 x 13.79 x 20.09 cm)
Weight:	22 lbs. (10.5 kg) including battery